



OMEGA 2

COMMERCIAL MULTI-STATION

OWNER'S MANUAL



SERIAL NUMBER HERE

DATE OF PURCHASE



BATCA
fitness systems · usa

INSTRUCTIONS

CONGRATULATIONS ON THE PURCHASE OF YOUR NEW BATCA OMEGA 2. THIS GYM WILL PROVIDE YOU WITH A LIFETIME OF ENJOYMENT TO MEET YOUR STRENGTH TRAINING NEEDS. BATCA FITNESS SYSTEMS STRIVES TO BUILD THE BEST QUALITY GYMS AND TO PACKAGE THESE GYMS IN SUCH A WAY TO AVOID ANY DAMAGE DURING SHIPPING.

IN ORDER TO GET STARTED WITH YOUR ASSEMBLY YOU SHOULD FIRST FAMILIARIZE YOURSELF WITH THIS MANUAL. IT IS RECOMMENDED THAT YOU READ THROUGH EACH STEP THOROUGHLY BEFORE YOU BEGIN. BEGIN BY OPENING YOUR BOXES AND SEPARATING ALL OF YOUR PARTS. VERIFY THAT ALL PARTS ARE ACCOUNTED FOR AND HAVE NO DAMAGE. WHEN ALL PARTS ARE ACCOUNTED FOR, YOU MAY BEGIN YOUR ASSEMBLY. SOME ITEMS MAY HAVE BEEN PRE-ASSEMBLED FOR YOUR CONVENIENCE. PLEASE NOTE THAT HARDWARE QUANTITIES SHOWN REFLECT TOTAL QUANTITIES FOR YOUR GYM AND MAY NOT REFLECT ACTUAL QUANTITIES IN EACH BAG. ASSEMBLE YOUR GYM ON A SOLID LEVEL SURFACE. THIS WILL ENSURE THE BEST POSSIBLE PERFORMANCE, FUNCTION, AND SAFETY FOR THE GYM AND YOUR WORKOUT.

ASSEMBLE YOUR GYM ACCORDING TO THE STEP BY STEP INSTRUCTIONS FOUND IN THIS MANUAL. FAILURE TO DO SO WILL VOID YOUR WARRANTY AND MAY RESULT IN PERSONAL INJURY. AFTER ASSEMBLY, YOU SHOULD CHECK EACH STATION TO ENSURE CORRECT OPERATION. IF A PROBLEM ARISES, RECHECK YOUR ASSEMBLY WITH THESE INSTRUCTIONS TO VERIFY CORRECT ASSEMBLY. IF YOU ARE UNABLE TO CORRECT A PROBLEM OR HAVE QUESTIONS WITH YOUR ASSEMBLY PLEASE CONTACT YOUR AUTHORIZED BATCA DEALER.

WARNING

BATCA FITNESS SYSTEMS HAS BUILT THIS GYM TO GIVE YOU A SAFE, EFFECTIVE AND ENJOYABLE WORKOUT. HOWEVER, THERE IS A RISK ASSUMED BY INDIVIDUALS WHO USE THIS TYPE OF EQUIPMENT. IT IS VERY IMPORTANT THAT ALL WARNINGS AND INSTRUCTIONS ARE READ AND FOLLOWED BEFORE BEGINNING ANY EXERCISE PROGRAM.

IT IS ALSO VERY IMPORTANT TO READ AND FOLLOW THE PREVENTATIVE MAINTENANCE SCHEDULE DESCRIBED IN THIS MANUAL. IF ANY OF THE WARNING LABELS OR STICKERS ARE WORN, FADED, TORN, SCRATCHED OR MISSING THEY SHOULD BE REPLACED IMMEDIATELY.

WARNING: THERE IS A RISK ASSUMED BY INDIVIDUALS WHO USE THIS TYPE OF EQUIPMENT. TO MINIMIZE RISK ALWAYS FOLLOW THESE RULES.

- 1) IT IS ESSENTIAL THAT YOU CONSULT WITH YOUR PHYSICIAN BEFORE BEGINNING ANY EXERCISE PROGRAM.
- 2) INSPECT EQUIPMENT BEFORE EACH USE FOR LOOSE, WORN, OR FRAYED PARTS (INCLUDING CABLES, NUTS AND BOLTS). REPLACE PARTS AT FIRST SIGNS OF WEAR (USE ONLY GENUINE BATCA REPLACEMENT PARTS). USE OF EQUIPMENT THAT IS DAMAGED, WORN, FRAYED OR NOT COMPLETELY ASSEMBLED ON A SOLID, LEVEL SURFACE MAY RESULT IN INJURY.
- 3) MAKE SURE ALL ADJUSTMENT PINS ARE FULLY ENGAGED BEFORE USING EQUIPMENT.
- 4) KEEP ALL PARTS OF THE BODY AND CLOTHING OUTSIDE THE PATH OF ANY MOVING PARTS OF THE GYM. BE ALERT TO THE POSSIBILITY OF INJURY. DO NOT BE CARELESS.
- 5) MINORS AND CHILDREN SHOULD NOT BE ALLOWED TO PLAY ON OR AROUND THIS GYM.

TABLE OF CONTENTS

| | PAGE | | PAGE |
|---------------------|-------|------------------------------------|-------|
| INSTRUCTIONS | 2 | LEG PRESS ASSEMBLY | 32-36 |
| PARTS LISTING | 3-5 | FINAL ASSEMBLY AND TROUBLESHOOTING | 37 |
| HARDWARE COMPARISON | 6-9 | CABLE TENSION AND ADJUSTMENTS | 38 |
| MAIN ASSEMBLY | 10-21 | MAINTENANCE | 39 |
| UPHOLSTERY | 27-30 | WARRANTY | 40 |
| CABLE ROUTING | 22-26 | FLOOR PLAN LAYOUT | 41 |

FRAME COMPONENTS

| ITEM NO. | PART NUMBER | DESCRIPTION | QTY. | ITEM NO. | PART NUMBER | DESCRIPTION | QTY. |
|----------|-------------|--|------|----------------------|-------------|--------------------------------------|------|
| 1 | BFP-10968 | MAIN HUB | 1 | 33 | BFP-51776 | AXLE | 1 |
| 2 | BFP-10984 | LEG EXTENSION/LEG CURL BASE | 1 | 34 | BFP-10979 | CHEST PRESS/MID ROW ARM | 1 |
| 3 | BFP-10971 | REAR BRACE FRAME | 1 | 35 | BFP-10980 | CHEST/BACK CHROME ADJUSTMENT | 1 |
| 4 | BFP-10969 | CHEST PRESS/MID ROW BASE | 1 | 36 | BFP-52370 | AXLE | 1 |
| 5 | BFP-10975 | CHEST PRESS/MID ROW UPRIGHT FRAME | 1 | 37 | BFP-11013 | CHROME SEAT ADJUSTMENT | 1 |
| 6 | BFP-10974 | TOP FRAME | 1 | 38 | BFP-10976 | FRONT GUIDE ROD/PULLEY HOLDER | 1 |
| 7 | BFP-51768 | CURVED ANTI-DEFLECTION PLATE | 1 | 39 | BFP-10977 | REAR GUIDE ROD/PULLEY HOLDER | 1 |
| 8 | BFP-52213 | ANTI-DEFLECTION PLATE | 1 | 40 | BFP-52227 | LONG GUIDE ROD | 2 |
| 9 | BFP-10972 | ANTI-DEFLECTION PLATE WITH LEG PRESS PULLEY HOLDER | 1 | 41 | BFP-52226 | SHORT GUIDE ROD | 2 |
| 10 | BFP-10973 | ANTI-DEFLECTION PLATE WITH LEG EXT./LEG CURL PULLEY HOLDER | 1 | 42 | BFM-10299 | TOP WEIGHT PLATE | 2 |
| 11 | BFP-10990 | REAR BOTTOM BRACE (RIGHT) | 1 | 43 | BFM-50256 | WEIGHT STACK PLATE | 38 |
| 12 | BFP-11016 | J BRACE/BEARING HOUSING | 1 | 44 | BFP-52143 | RUBBER DONUT | 4 |
| 13 | BFP-11015 | LEG EXTENSION/LEG CURL FRAME | 1 | 45 | BFP-52165 | DOUBLE PULLEY PLATE | 2 |
| 14 | BFP-11014 | LEG EXTENSION/LEG CURL BRACE | 1 | 46 | BFP-10838 | FREE FLOATER | 1 |
| 15 | BFP-52132 | ANTI-DEFLECTION PLATE | 1 | 47 | BFP-51883 | DOUBLE PULLEY COVER | 1 |
| 16 | BFP-52159 | ANTI-DEFLECTION PLATE | 1 | 48 | BFM-10588 | KNEE HOLD DOWN HANDLE | 1 |
| 17 | BFP-51836 | CURVED ANTI-DEFLECTION PLATE | 1 | 49 | BFP-52267 | FRONT SHROUD WITH LOGO | 1 |
| 18 | BFP-10873 | LEFT HANDLE | 1 | 50 | BFP-52269 | REAR SHROUD WITH LOGO | 1 |
| 19 | BFP-10872 | RIGHT HANDLE | 1 | 51 | BFP-52268 | FRONT SHROUD | 1 |
| 20 | BFP-10867 | LEG EXT./LEG CURL CAM | 1 | 52 | BFP-52271 | REAR SHROUD | 1 |
| 21 | BFP-10868 | LEG EXT./LEG CURL ARM | 1 | 53 | BFP-52383 | GUIDE ROD SLEEVE | 2 |
| 22 | BFP-52364 | 6" COUNTER WEIGHT | 1 | <h2>ACCESSORIES</h2> | | | |
| 23 | BFP-10871 | KNEE ALIGNMENT ROLLER | 1 | | | | |
| 24 | BFP-52177 | AXLE | 1 | ITEM NO. | PART NUMBER | DESCRIPTION | QTY. |
| 25 | BFP-10870 | KNEE HOLD DOWN ASSEMBLY | 1 | 54 | BFM-51173 | RED AND YELLOW WEIGHT STACK PULL PIN | 2 |
| 26 | BFP-52201 | KNEE HOLD DOWN CAM | 1 | 55 | BFC-50122 | AB STRAP | 1 |
| 27 | BFP-51909 | AXLE | 1 | 56 | BFC-50125 | LAT PULL BAR | 1 |
| 28 | BFP-10948 | BACK CHROME ADJUSTMENT | 1 | 57 | BFC-50126 | SHORT BAR | 1 |
| 29 | BFP-10978 | CHEST PRESS/MID ROW SWING ARM | 1 | | | | |
| 30 | BFP-11018 | MID ROW/LAT PULL KNEE HOLD DOWN ROLLER | 1 | | | | |
| 31 | BFP-11017 | SWIVEL PULLEY HOLDER | 1 | | | | |
| 32 | BFP-51800 | CURVED ANTI-DEFLECTION PLATE | 1 | | | | |

ACCESSORIES

| ITEM NO. | PART NUMBER | DESCRIPTION | QTY. |
|----------|-------------|--------------------------------------|------|
| 54 | BFM-51173 | RED AND YELLOW WEIGHT STACK PULL PIN | 2 |
| 55 | BFC-50122 | AB STRAP | 1 |
| 56 | BFC-50125 | LAT PULL BAR | 1 |
| 57 | BFC-50126 | SHORT BAR | 1 |

HARDWARE

| ITEM NO. | PART NUMBER | DESCRIPTION | QTY. |
|----------|--------------|---------------------------|------|
| 58 | BFH-50165 | 1" SNAP RING | 4 |
| 59 | BFP-51885 | RED PIVOT POINT CAP | 1 |
| 60 | BFP-51696 | SMALL ALUMINUM END CAP | 4 |
| 61 | BFH-50210 | GAS SPRING | 1 |
| 62 | 2xBFC-50128 | 2 LINK CHAIN | 1 |
| 63 | 14xBFC-50128 | 14 LINK CHAIN | 1 |
| 64 | BFH-50622 | LARGE ALUMINUM END CAP | 6 |
| 65 | BFH-50188 | SNAP HOOK | 3 |
| 66 | BFH-50221 | 3" PLASTIC WASHER | 4 |
| 67 | BFP-51746 | 1/2" PULLEY SPACERS | 8 |
| 68 | BFH-50173 | 3 1/2" PULLEY | 1 |
| 69 | BFH-50174 | 4 1/2" PULLEY | 19 |
| 70 | BFP-52157 | 4 1/2" WIDE GROOVE PULLEY | 1 |
| 71 | BFP-52372 | SHCS 5/16" x 1/2" | 3 |
| 72 | BFP-52430 | BHSCS 3/8" x 3/4" | 14 |
| 73 | BFH-50144 | FHSCS 3/8" x 1" | 2 |
| 74 | BFH-50245 | FHSCS 5/16 x 1" | 2 |
| 75 | BFH-50620 | BHSCS 3/8" x 1" | 5 |
| 76 | BFP-51653 | SHCS 3/8" x 1 1/4" | 8 |
| 77 | BFH-50351 | 1 3/8" SHOULDER BOLT | 4 |
| 78 | BFP-52377 | FHSCS 3/8" x 2" | 2 |
| 79 | BFP-51759 | SHCS 3/8" x 2" | 7 |
| 80 | BFP-51752 | SHCS 3/8" x 2 1/4" | 13 |
| 81 | BFP-52382 | SHCS 3/8" x 2 1/2" | 5 |
| 82 | BFP-51750 | SHCS 3/8" x 2 3/4" | 10 |
| 83 | BFP-51748 | SHCS 3/8" x 3 1/4" | 10 |
| 84 | BFP-51747 | SHCS 3/8" x 3" | 8 |
| 85 | BFP-51884 | SHCS 3/8" x 4 1/4" | 2 |
| 86 | BFP-51799 | SHCS 3/8" x 5 " | 2 |
| 87 | BFP-51756 | SHCS 3/8" x 5 1/4" | 4 |
| 88 | BFP-52364 | SHCS 3/8" x 6" | 1 |
| 89 | BFH-50267 | 5/16" NYLOCK | 4 |
| 90 | BFH-50147 | 3/8" LOCK WASHER | 8 |
| 91 | BFH-50204 | 3/8" CURVED WASHER | 18 |
| 92 | BFH-50146 | 3/8" FLAT WASHER | 99 |
| 93 | BFH-50157 | 3/8" NYLOCK | 62 |

UPHOLSTERY

| ITEM NO. | PART NUMBER | DESCRIPTION | QTY. |
|----------|-------------|------------------------|------|
| 94 | BFP-52136 | BACK PAD WITH LUMBAR | 2 |
| 95 | BFP-52141 | BOTTOM PAD | 1 |
| 96 | BFU-10121 | 7" UPHOLSTERED ROLLER | 6 |
| 97 | BFP-52130 | LARGE BOTTOM PAD | 1 |
| 98 | BFU-10122 | 17" UPHOLSTERED ROLLER | 1 |

CABLES

| ITEM NO. | PART NUMBER | DESCRIPTION | QTY. |
|----------|-------------|--------------------------------|------|
| 99 | CAB-14009 | WEIGHT STACK TO SWIVEL PULLEY | 1 |
| 100 | CAB-14010 | LOW PULLEY TO MID PULLEY | 1 |
| 101 | CAB-14013 | WEIGHT STACK TO LOCKOUT | 1 |
| 102 | CAB-14012 | FREE FLOATER LEG EXTENSION CAM | 1 |

TOOLS REQUIRED

- 9/16" WRENCH
- 9/16" RATCHET
- ALLEN WRENCH SET
- TAPE MEASURE

- 1/2" WRENCH
- 1/2" RATCHET
- 3/4" WRENCH
- SNAP RING PLIERS

LEG PRESS COMPONENTS

| ITEM NO. | PART NUMBER | DESCRIPTION | QTY. |
|----------|-------------|---|------|
| 103 | BFP-10992 | REAR BOTTOM BRACE (LEFT) OPTIONAL* | 1 |
| 104 | BFP-10973 | ANTI-DEFLECTION PLATE WITH LEG EXT./LEG CURL PULLEY HOLDER | 1 |
| 105 | BFP-10838 | FREE FLOATER | 1 |
| 106 | BFP-52355 | PULLEY SUPPORT PLATE | 1 |
| 107 | BFP-10981 | LEG PRESS BASE | 1 |
| 108 | BFP-52164 | ANTI-DEFLECTION PLATE | 1 |
| 109 | BFP-10982 | LEG PRESS FRAME | 1 |
| 110 | BFP-10860 | LEFT HANDLE | 1 |
| 111 | BFP-10861 | RIGHT HANDLE | 1 |
| 112 | BFP-52159 | ANTI DEFLECTION PLATE | 1 |
| 113 | BFP-10851 | FOUR ARM | 2 |
| 114 | BFP-10852 | PIVOT ARM | 1 |
| 115 | BFP-10853 | LEG PRESS FOOT PLATE | 1 |
| 116 | BFP-10856 | BACK CHROME ADJUSTMENT | 1 |
| 117 | BFM-50345 | PULLEY COVER | 1 |

UPHOLSTERY

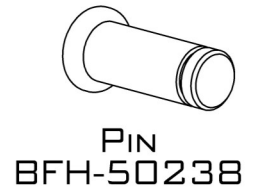
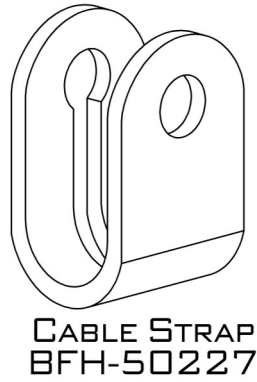
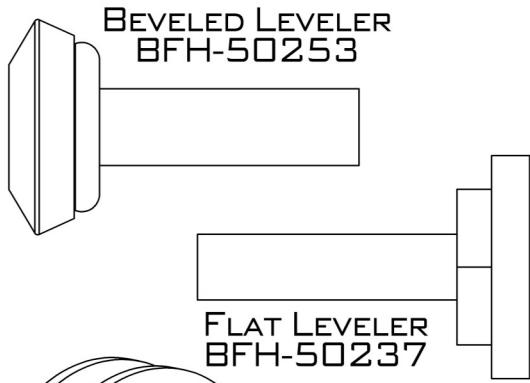
| ITEM NO. | PART NUMBER | DESCRIPTION | QTY. |
|----------|-------------|----------------------|------|
| 118 | BFP-52136 | BACK PAD WITH LUMBAR | 1 |
| 119 | BFP-52130 | LARGE BOTTOM PAD | 1 |

HARDWARE

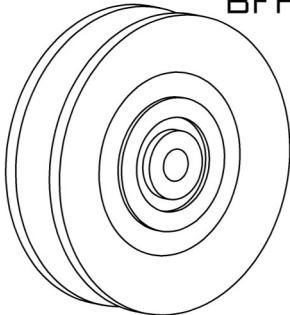
| ITEM NO. | PART NUMBER | DESCRIPTION | QTY. |
|----------|-------------|------------------------|------|
| 120 | BFH-50174 | 4 1/2" PULLEY | 8 |
| 121 | BFP-51696 | SMALL ALUMINUM END CAP | 2 |
| 122 | BFP-51746 | 1/2" PULLEY SPACER | 4 |
| 123 | BFP-52430 | SHCS 5/16" x 1/2" | 2 |
| 124 | BFH-50620 | BHSCS 3/8" x 1" | 4 |
| 125 | BFP-51653 | SHCS 3/8" x 1 1/4" | 4 |
| 126 | BFH-50250 | 1 1/4" SHOULDER BOLT | 1 |
| 127 | BFP-51759 | SHCS 3/8" x 2" | 1 |
| 128 | BFP-51752 | SHCS 3/8" 2 1/4" | 4 |
| 129 | BFP-52382 | SHCS 3/8" x 2 1/2" | 2 |
| 130 | BFP-51750 | SHCS 3/8" x 2 3/4" | 2 |
| 131 | BFP-51747 | SHCS 3/8" x 3" | 2 |
| 132 | BFP-51748 | SHCS 3/8" x 3 1/4" | 4 |
| 133 | BFP-51799 | SHCS 3/8" x 5" | 2 |
| 134 | BFH-50267 | 5/16" NYLOCK | 1 |
| 135 | BFH-50204 | 3/8" CURVED WASHER | 4 |
| 136 | BFH-50146 | 3/8" FLAT WASHER | 30 |
| 137 | BFH-50157 | 3/8" NYLOCK | 20 |
| 138 | BFH-50147 | 3/8" LOCK WASHER | 4 |

CABLE

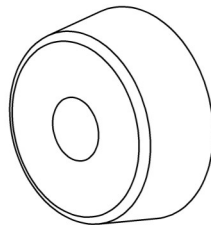
| ITEM NO. | PART NUMBER | DESCRIPTION | QTY. |
|----------|-------------|---|------|
| 139 | CAB-14008 | WEIGHT STACK TO LEG PRESS FREE FLOATER | 1 |
| 140 | CAB-14011 | FREE FLOATER TO CABLE LOCKOUT | 1 |



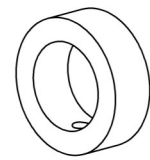
SNAP RING
BFH-50239



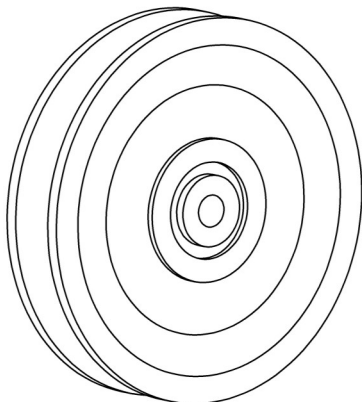
3 1/2" PULLEY
BFH-50173



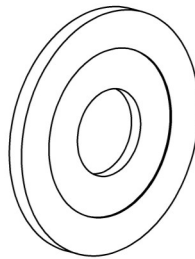
RUBBER DONUT
BFM-50529



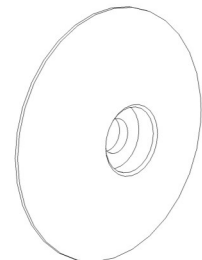
THREADED COLLAR
BFH-50220



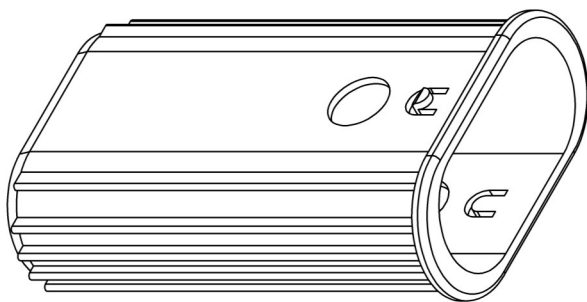
4 1/2" PULLEY
BFH-50174



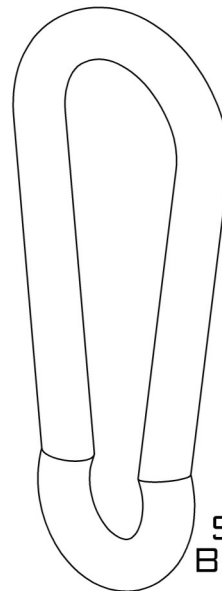
3" PLASTIC WASHER
BFH-50221



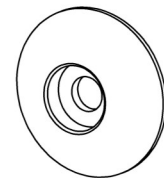
LARGE (3") ALUMINUM
END CAP
BFH-50622



SLEEVE INSERT
BFP-51744



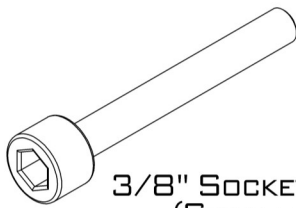
SNAP HOOK
BFH-50188



SMALL (2") ALUMINUM
END CAP
BFP-51696

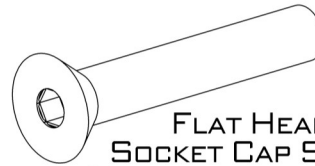


RED PIVOT
POINT END CAP
BFP-51885



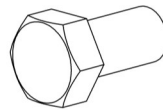
3/8" SOCKET HEAD CAP SCREW
(SIZES LISTED IN CHART)

| PART # | BOLT SIZE |
|-----------|---------------|
| BFP-52340 | 3/8" x 3/4" |
| BFP-52376 | 3/8" x 1" |
| BFP-51653 | 3/8" x 1 1/4" |
| BFP-51697 | 3/8" x 1 1/2" |
| BFP-51759 | 3/8" x 2" |
| BFP-51752 | 3/8" x 2 1/4" |
| BFP-51750 | 3/8" x 2 3/4" |
| BFP-51747 | 3/8" x 3" |
| BFP-51748 | 3/8" x 3 1/4" |
| BFP-51760 | 3/8" x 3 1/2" |
| BFP-52345 | 3/8" x 4" |
| BFP-51884 | 3/8" x 4 1/4" |
| BFP-51751 | 3/8" x 4 1/2" |
| BFP-51753 | 3/8" x 4 3/4" |
| BFP-51799 | 3/8" x 5" |
| BFP-51756 | 3/8" x 5 1/4" |
| BFP-52364 | 3/8" x 6" |

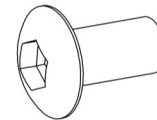


FLAT HEAD SOCKET CAP SCREW
(SIZES LISTED IN CHART)

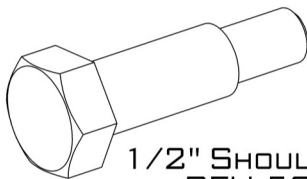
| PART # | BOLT SIZE |
|-----------|------------------------|
| BFH-50144 | FHSCS 3/8"-16 x 1" |
| BFP-52377 | FHSCS 3/8" x 2" |
| BFH-50145 | FHSCS 3/8"-16 x 2 1/4" |
| BFP-52374 | FHSCS 3/8" x 2 3/4" |



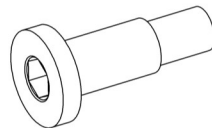
HEX HEAD CAP SCREW (HCS) 3/8" x 3/4"
(BFH-50254)



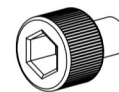
BUTTON HEAD SOCKET CAP SCREW (BHSCS) 3/8" x 3/4"
BFP-52430



1/2" SHOULDER BOLT
BFH-50249



1 1/4" SHOULDER BOLT
BFH-50250



ZINC PLATED SHCS 5/16" x 1/2"
(BFP-52372)



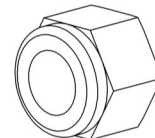
5/16"-18 NYLOCK
BFH-50267



3/8"-16 THIN NYLOCK
BFH-50247



3/8"-16 NYLOCK
BFH-50157



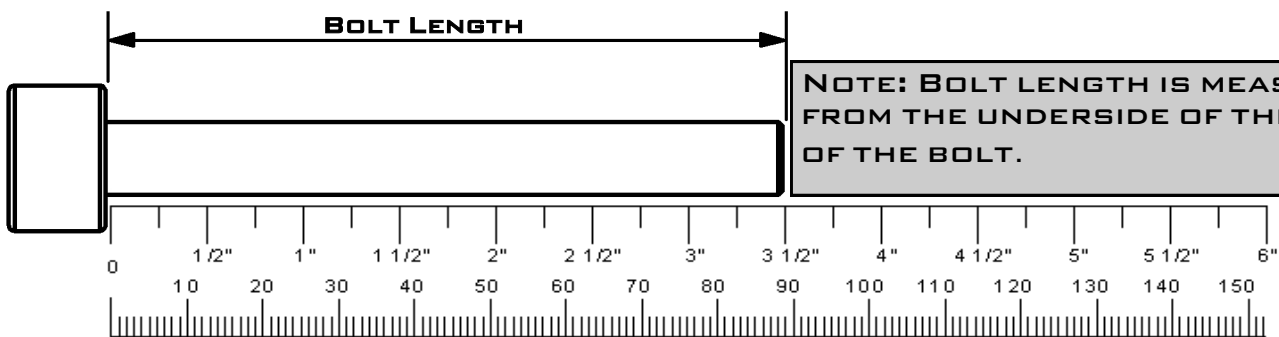
1/2"-13 NYLOCK
BFH-50251

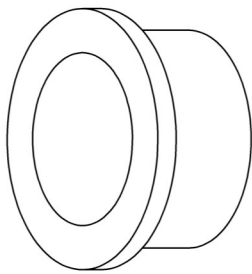


1/2" JAM NUT
BFH-50256

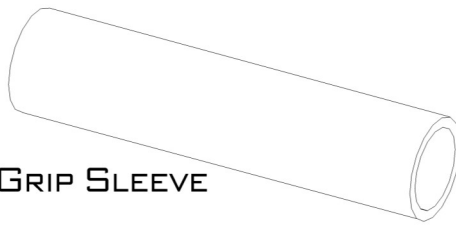


3/8" JAM NUT
BFH-50149

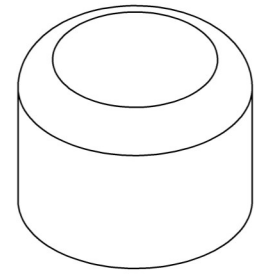




1" BRONZE BUSHING
BFH-50101



GRIP SLEEVE



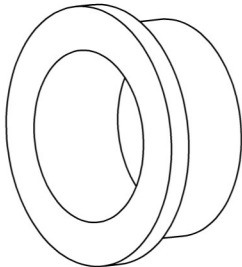
1" OUTER PLASTIC CAP
BFH-50111



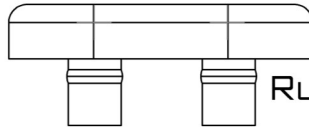
GRIP CAP



GRIP COLLAR

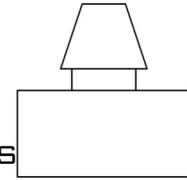


1" BRONZE BUSHING x 1/2" L
BFH-50297

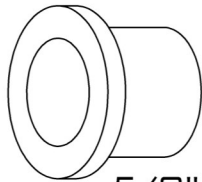


BFH-50222

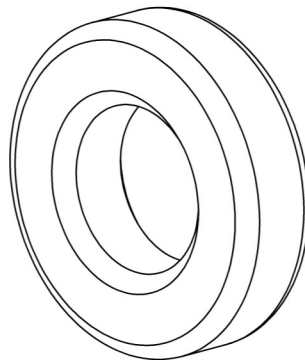
RUBBER BUMPERS



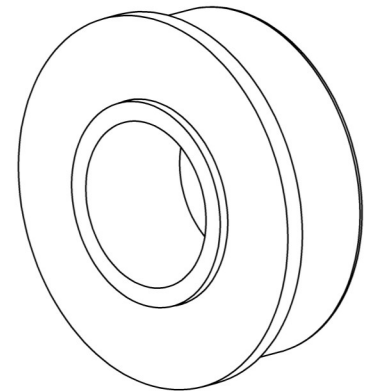
BFH-50200



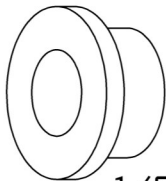
5/8" BRONZE BUSHING
BFH-50102



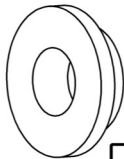
RADIAL BEARING
BFH-50602



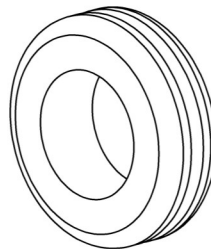
FLANGED RADIAL BEARING
BFP-51949



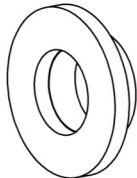
1/2" BRONZE BUSHING
BFH-50103



CABLE PIVOT BUSHING
BFH-50248



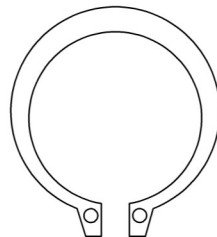
RUBBER GROMMET
BFH-50199



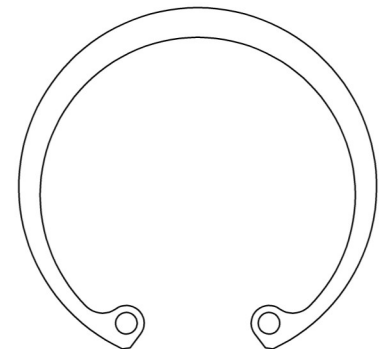
SHORT 1/2" BUSHING
BFH-50244



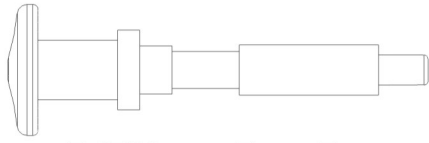
1/2" SNAP RING
BFH-50166



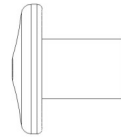
1" SNAP RING
BFH-50165



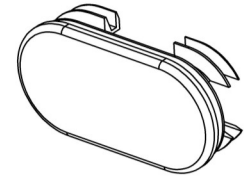
2 1/2" SNAP RING
BFH-50604



3/8" LONG PULL PIN
BFM-51176



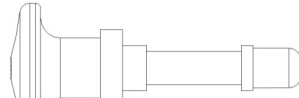
PULL PIN HANDLE
BFM-51181



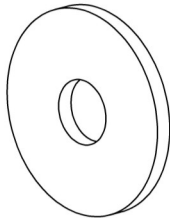
PLASTIC END CAP
(BFP-52101)



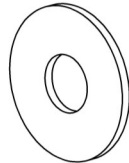
1/2" LONG PULL PIN
BFM-51172



3/8" SHORT PULL PIN
BFM-51175



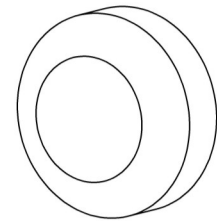
3/8" FENDER WASHER
BFH-50242



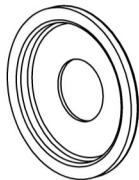
3/8" FLAT WASHER
BFH-50146



3/8" CURVED WASHER
BFH-50204



SCREW CAP COVER
BFH-50112



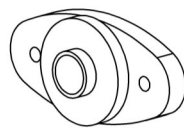
SCREW CAP WASHER
BFH-50113



3/8" LOCK WASHER
BFH-50147



MAGNETIC WEIGHT STACK PIN
BFM-51173



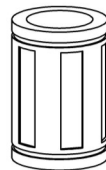
SIDE MOUNTED
FLANGE BEARING
BFH-50171



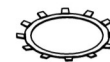
BAR CATCH RUBBER
SLEEVE
BFH-50240

ITEMS NOT SHOWN.

| PART # | DESCRIPTION |
|-----------|-----------------------|
| BFH-50259 | MIDNIGHT BLACK PAINT |
| BFH-50278 | SILVER METALLIC PAINT |
| BFH-50198 | LARGE LOGO |
| BFH-50236 | FOAM GRIP |
| BFH-50262 | SILICON GEL PACK |
| BFC-10101 | 1 INCH CHAIN |
| BFC-10102 | 12 INCH CHAIN |



LINEAR BEARING
BFH-50627



BEARING RETAINING
CLIP
BFH-50628



PLEASE FOLLOW ALL DIRECTIONS VERY CAREFULLY FOR PROPER INSTALLATION.

STEP 1:

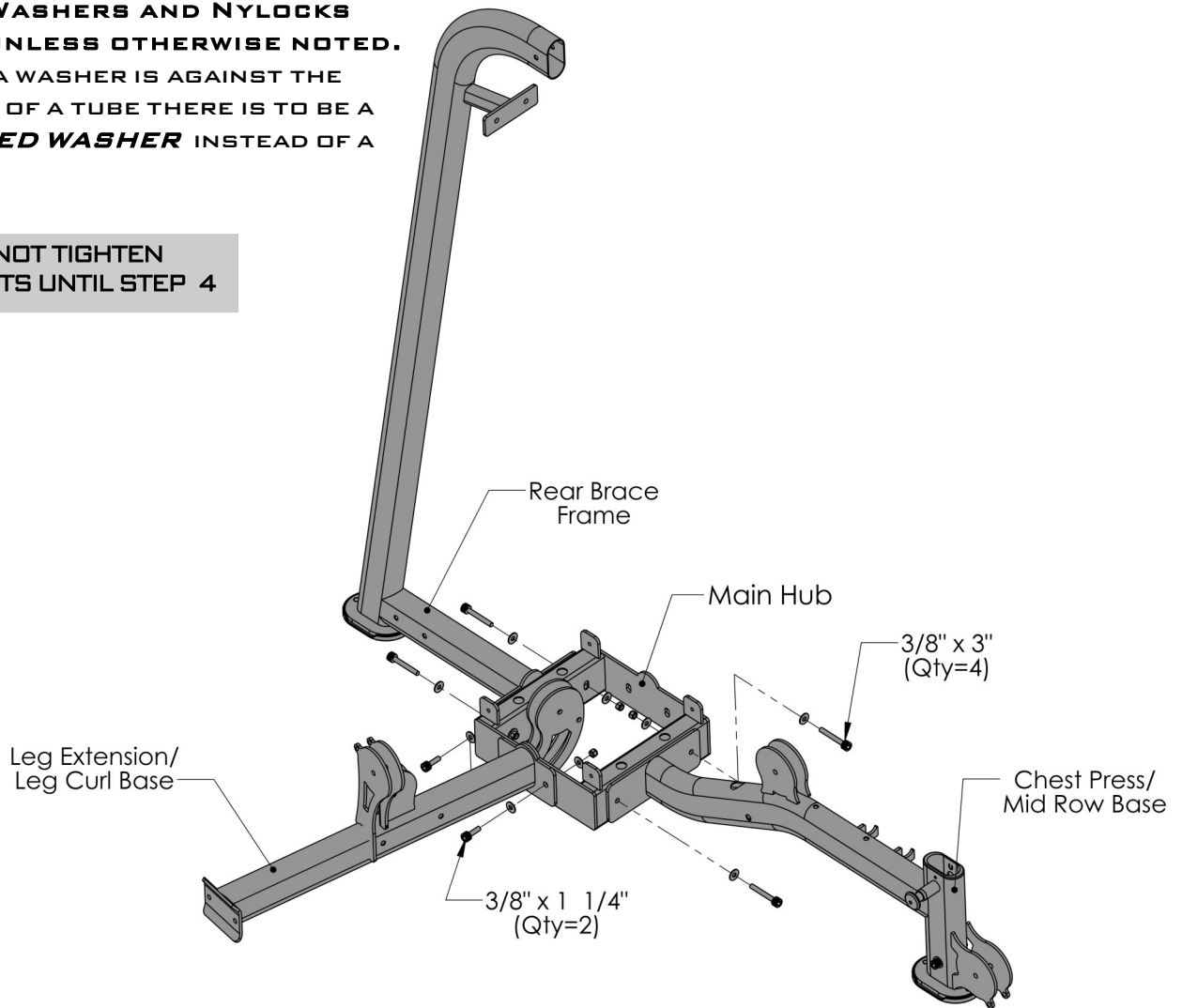


NOTE: FOR A MORE CONSISTENT APPEARANCE, POSITION ALL BOLTS IN THE DIRECTION SHOWN IN EACH FIGURE.

ALL FLAT WASHERS AND NYLOCKS ARE 3/8" UNLESS OTHERWISE NOTED. ANYWHERE A WASHER IS AGAINST THE ROUND SIDE OF A TUBE THERE IS TO BE A 3/8" CURVED WASHER INSTEAD OF A



DO NOT TIGHTEN BOLTS UNTIL STEP 4

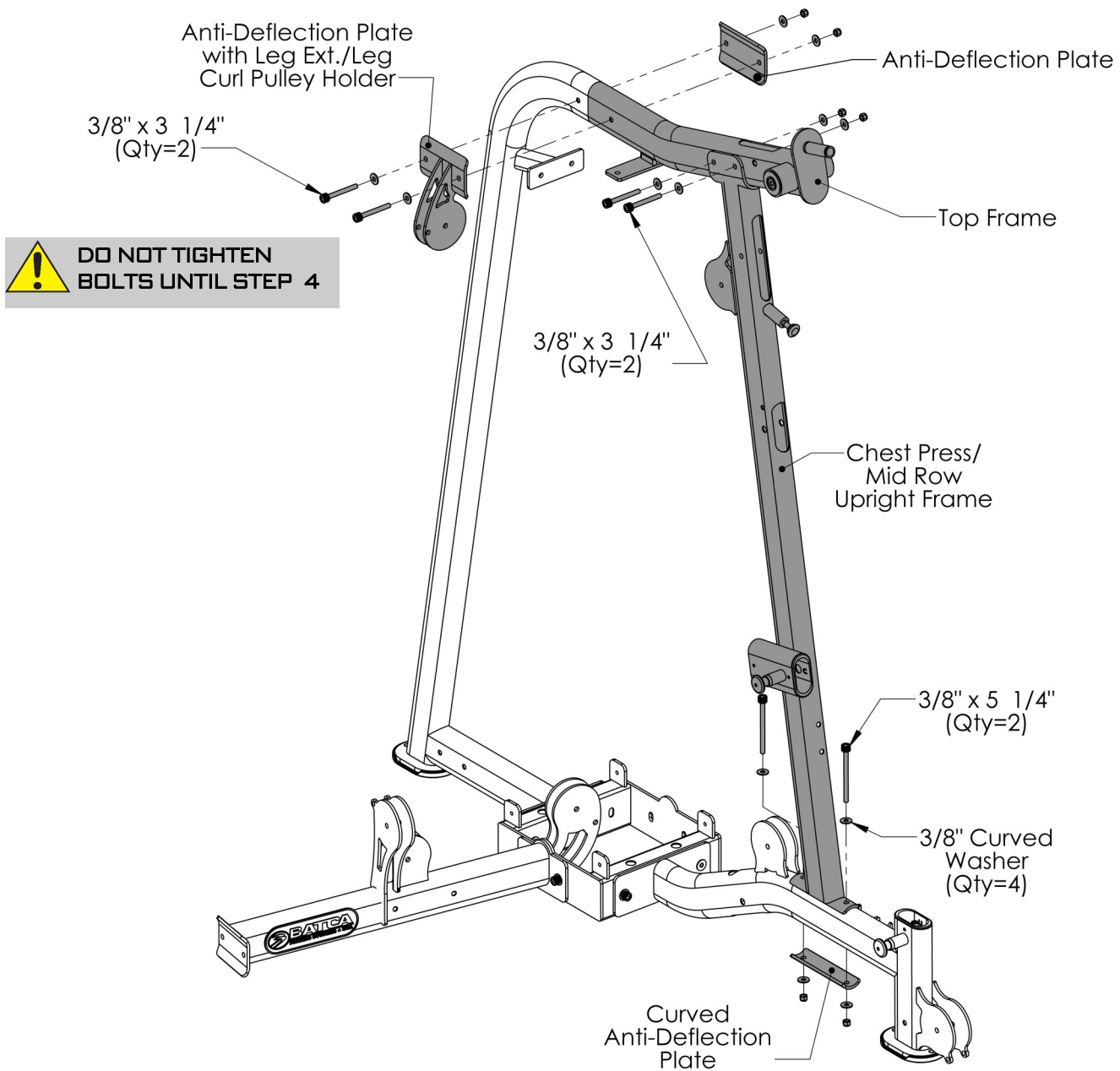


| ITEM # | PART # | DESCRIPTION | QTY |
|--------|-----------|-----------------------------|-----|
| 1 | BFP-10968 | MAIN HUB | 1 |
| 2 | BFP-10984 | LEG EXTENSION/LEG CURL BASE | 1 |
| 3 | BFP-10971 | REAR BRACE FRAME | 1 |
| 4 | BFP-10969 | CHEST PRESS/MID ROW BASE | 1 |
| 76 | BFP-51653 | SHCS 3/8" x 1 1/4" | 2 |
| 84 | BFP-51747 | SHCS 3/8" x 3" | 4 |
| 92 | BFH-50146 | 3/8" FLAT WASHER | 12 |
| 93 | BFH-50157 | 3/8" NYLOCK | 6 |

STEP 2:



SKIP THIS STEP IF LEG PRESS WAS PURCHASED.

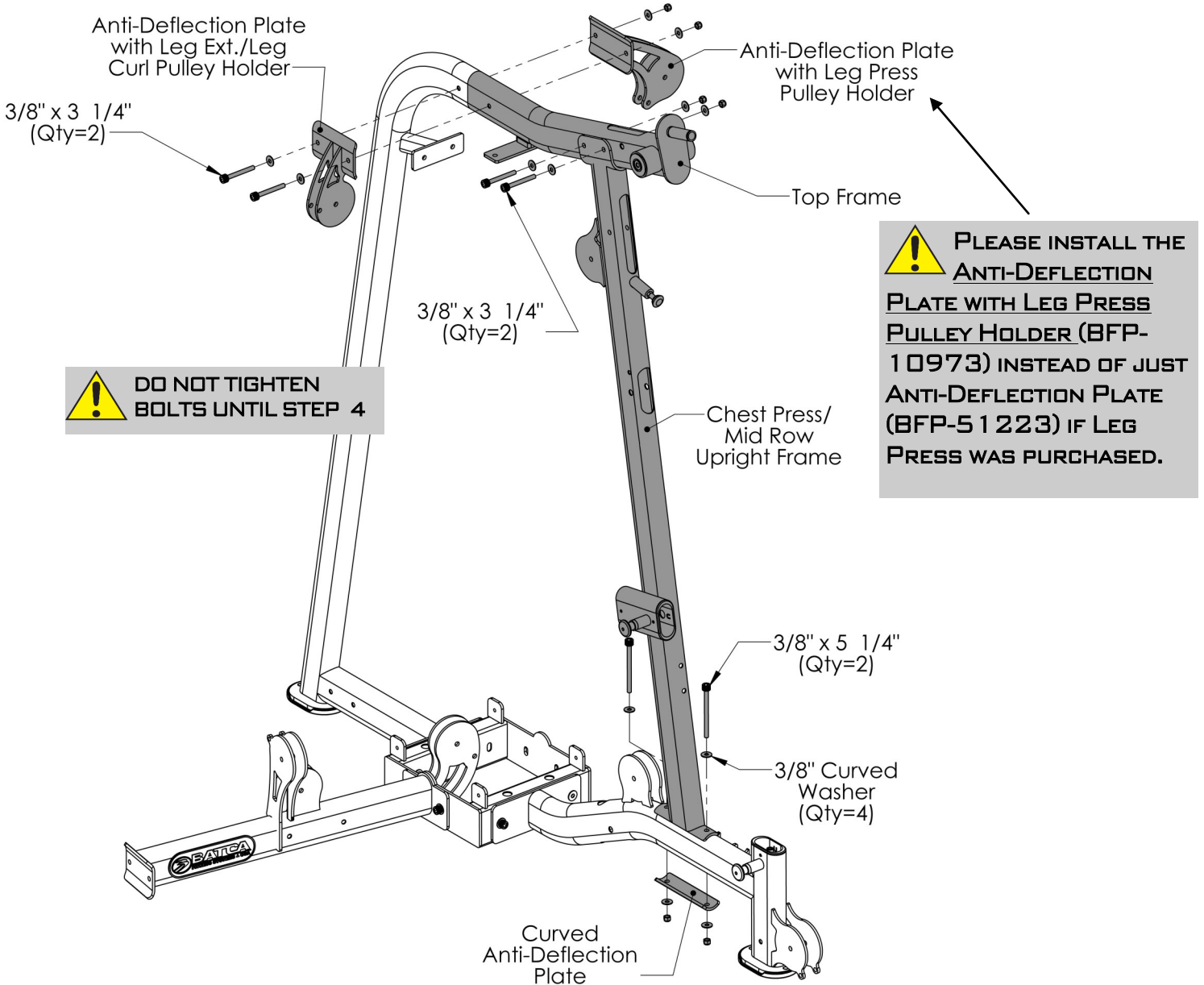


DO NOT TIGHTEN BOLTS UNTIL STEP 4

| ITEM # | PART # | DESCRIPTION | QTY |
|--------|-----------|--|-----|
| 5 | BFP-10975 | CHEST PRESS/MID ROW UPRIGHT FRAME | 1 |
| 6 | BFP-10974 | TOP FRAME | 1 |
| 7 | BFP-51768 | CURVED ANTI-DEFLECTION PLATE | 1 |
| 8 | BFP-52213 | ANTI-DEFLECTION PLATE | 1 |
| 10 | BFP-10973 | ANTI-DEFLECTION PLATE WITH LEG EXT./LEG CURL PULLEY HOLDER | 1 |
| 83 | BFP-51748 | SHCS 3/8" x 3 1/4" | 4 |
| 87 | BFP-51756 | SHCS 3/8" x 5 1/4" | 2 |
| 91 | BFH-50204 | 3/8" CURVED WASHER | 4 |
| 92 | BFH-50146 | 3/8" FLAT WASHER | 8 |
| 93 | BFH-50157 | 3/8" NYLOCK | 6 |

ALL FLAT WASHERS AND NYLOCKS ARE 3/8" UNLESS OTHERWISE NOTED. ANYWHERE A WASHER IS AGAINST THE ROUND SIDE OF A TUBE THERE IS TO BE A **3/8" CURVED WASHER** INSTEAD OF A **3/8" FLAT WASHER**.

STEP 2A:



DO NOT TIGHTEN BOLTS UNTIL STEP 4

PLEASE INSTALL THE ANTI-DEFLECTION PLATE WITH LEG PRESS PULLEY HOLDER (BFP-10973) INSTEAD OF JUST ANTI-DEFLECTION PLATE (BFP-51223) IF LEG PRESS WAS PURCHASED.

| ITEM # | PART # | DESCRIPTION | QTY |
|--------|-----------|--|-----|
| 5 | BFP-10975 | CHEST PRESS/MID ROW UPRIGHT FRAME | 1 |
| 6 | BFP-10974 | TOP FRAME | 1 |
| 7 | BFP-51768 | CURVED ANTI-DEFLECTION PLATE | 1 |
| 9 | BFP-10972 | ANTI-DEFLECTION PLATE WITH LEG PRESS PULLEY HOLDER | 1 |
| 10 | BFP-10973 | ANTI-DEFLECTION PLATE WITH LEG EXT./LEG CURL PULLEY HOLDER | 1 |
| 83 | BFP-51748 | SHCS 3/8" x 3 1/4" | 4 |
| 84 | BFP-51756 | SHCS 3/8" x 5 1/4" | 2 |
| 91 | BFH-50204 | 3/8" CURVED WASHER | 4 |
| 92 | BFH-50146 | 3/8" FLAT WASHER | 8 |
| 93 | BFH-50157 | 3/8" NYLOCK | 6 |

ALL FLAT WASHERS AND NYLOCKS ARE 3/8" UNLESS OTHERWISE NOTED. ANYWHERE A WASHER IS AGAINST THE ROUND SIDE OF A TUBE THERE IS TO BE A **3/8" CURVED WASHER** INSTEAD OF A **3/8" FLAT WASHER**.

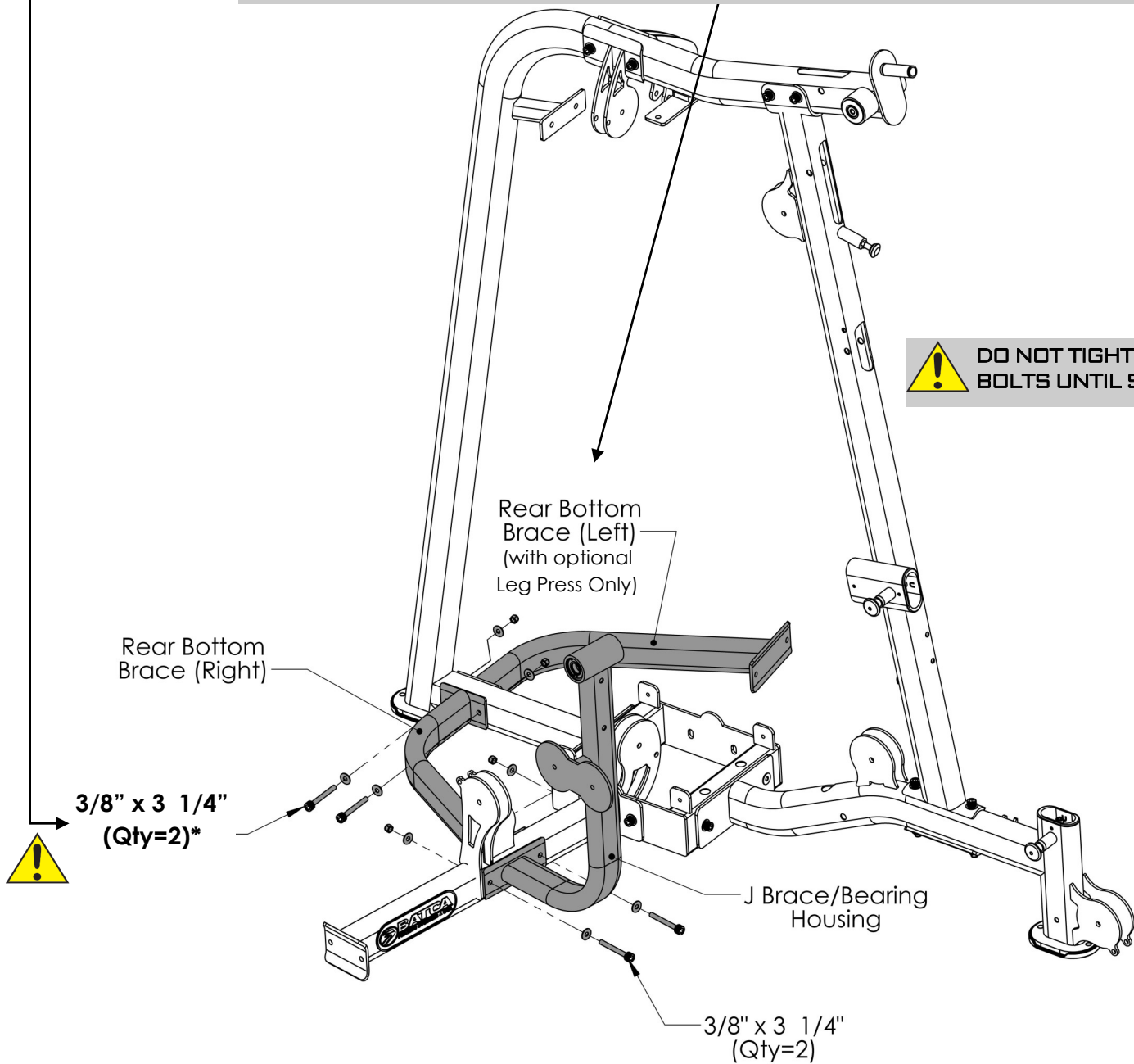
STEP 3:



DO NOT INSTALL THE *REAR BOTTOM BRACE (LEFT)* IF OPTIONAL LEG PRESS WAS NOT PURCHASED AND USE SHCS 3/8" X 3" BOLTS INSTEAD OF SHCS 3/8" X 3 1/4".



DO NOT TIGHTEN BOLTS UNTIL STEP 4



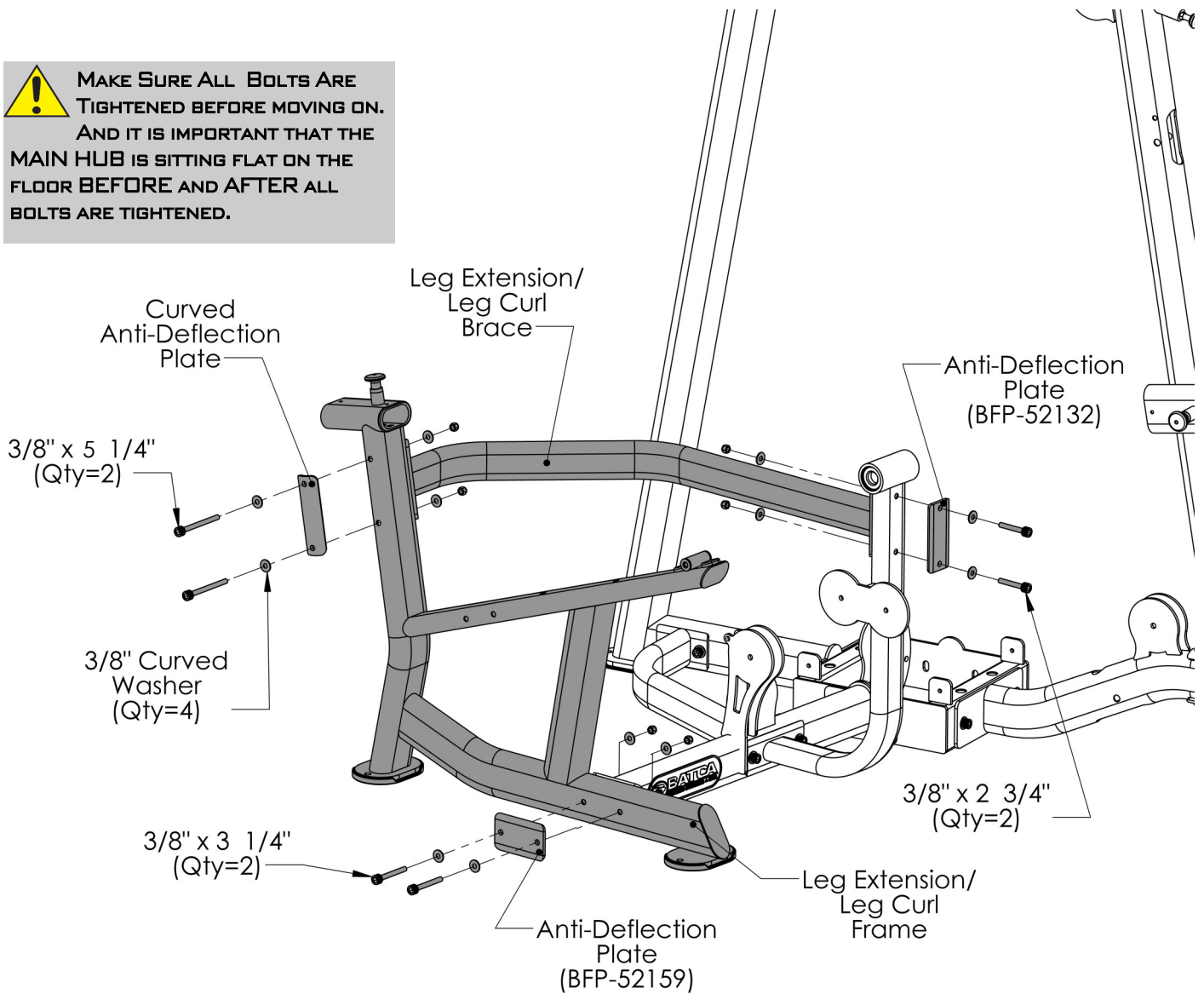
| ITEM # | PART # | DESCRIPTION | QTY |
|--------|-----------|------------------------------------|-----|
| 11 | BFP-10990 | REAR BOTTOM BRACE (RIGHT) | 1 |
| 103 | BFP-10992 | REAR BOTTOM BRACE (LEFT) OPTIONAL* | 1 |
| 12 | BFP-11016 | J BRACE/BEARING HOUSING | 1 |
| 132 | BFP-51748 | SHCS 3/8" X 3 1/4"* | 4 |
| 92 | BFH-50146 | 3/8" FLAT WASHER | 8 |
| 93 | BFH-50157 | 3/8" NYLOCK | 4 |

ALL FLAT WASHERS AND NYLOCKS ARE 3/8" UNLESS OTHERWISE NOTED.

STEP 4:



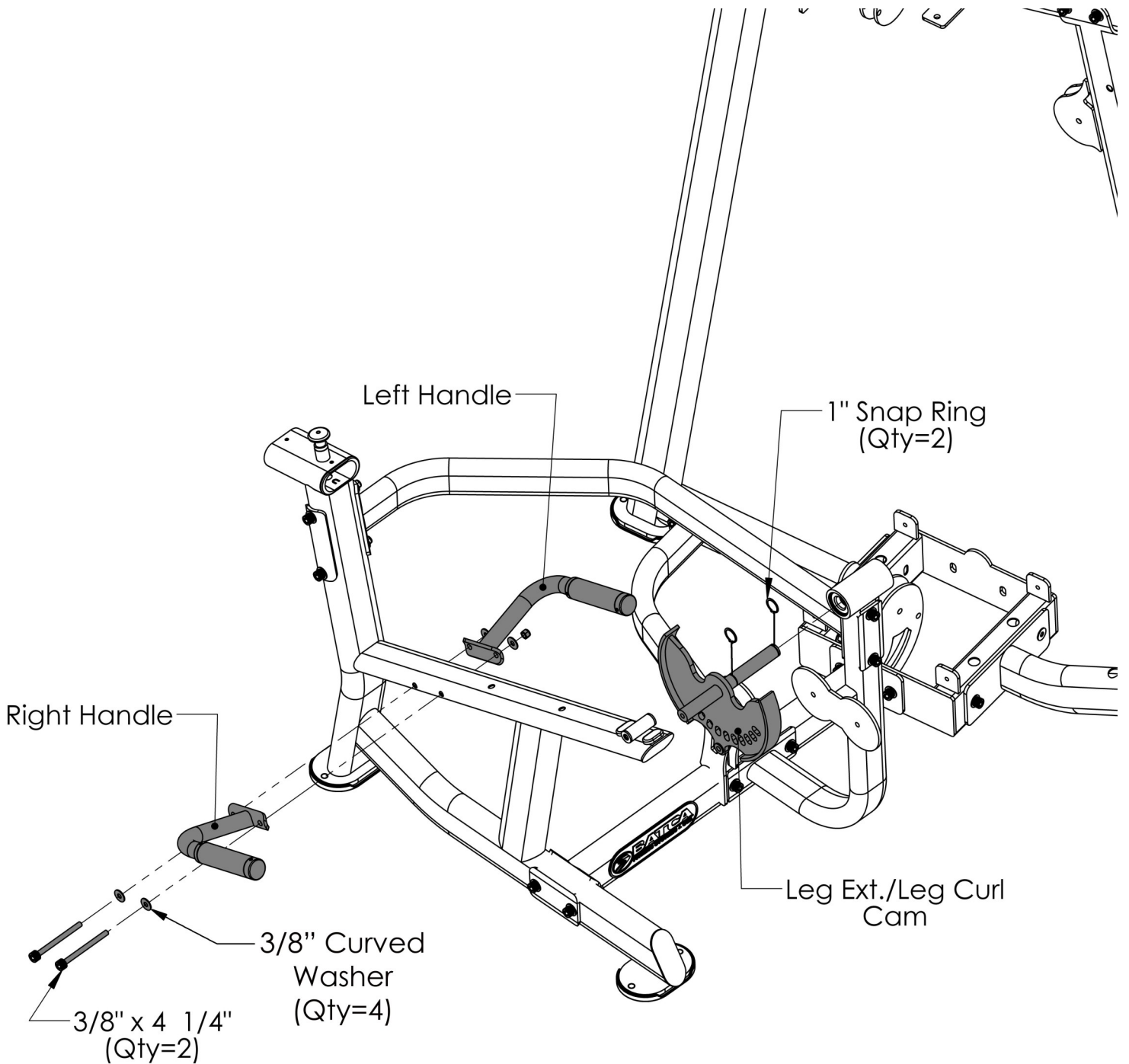
MAKE SURE ALL BOLTS ARE TIGHTENED BEFORE MOVING ON. AND IT IS IMPORTANT THAT THE MAIN HUB IS SITTING FLAT ON THE FLOOR BEFORE AND AFTER ALL BOLTS ARE TIGHTENED.



| ITEM # | PART # | DESCRIPTION | QTY |
|--------|-----------|------------------------------|-----|
| 13 | BFP-11015 | LEG EXTENSION/LEG CURL FRAME | 1 |
| 14 | BFP-11014 | LEG EXTENSION/LEG CURL BRACE | 1 |
| 15 | BFP-52132 | ANTI-DEFLECTION PLATE | 1 |
| 16 | BFP-52159 | ANTI-DEFLECTION PLATE | 1 |
| 17 | BFP-51836 | CURVED ANTI-DEFLECTION PLATE | 1 |
| 82 | BFP-51750 | SHCS 3/8" x 2 3/4" | 2 |
| 83 | BFP-51748 | SHCS 3/8" x 3 1/4" | 2 |
| 87 | BFP-51756 | SHCS 3/8" x 5 1/4" | 2 |
| 91 | BFH-50204 | 3/8" CURVED WASHER | 4 |
| 92 | BFH-50146 | 3/8" FLAT WASHER | 8 |
| 93 | BFH-50157 | 3/8" NYLOCK | 6 |

ALL FLAT WASHERS AND NYLOCKS ARE 3/8" UNLESS OTHERWISE NOTED. ANYWHERE A WASHER IS AGAINST THE ROUND SIDE OF A TUBE THERE IS TO BE A **3/8" CURVED WASHER** INSTEAD OF A **3/8" FLAT WASHER**.

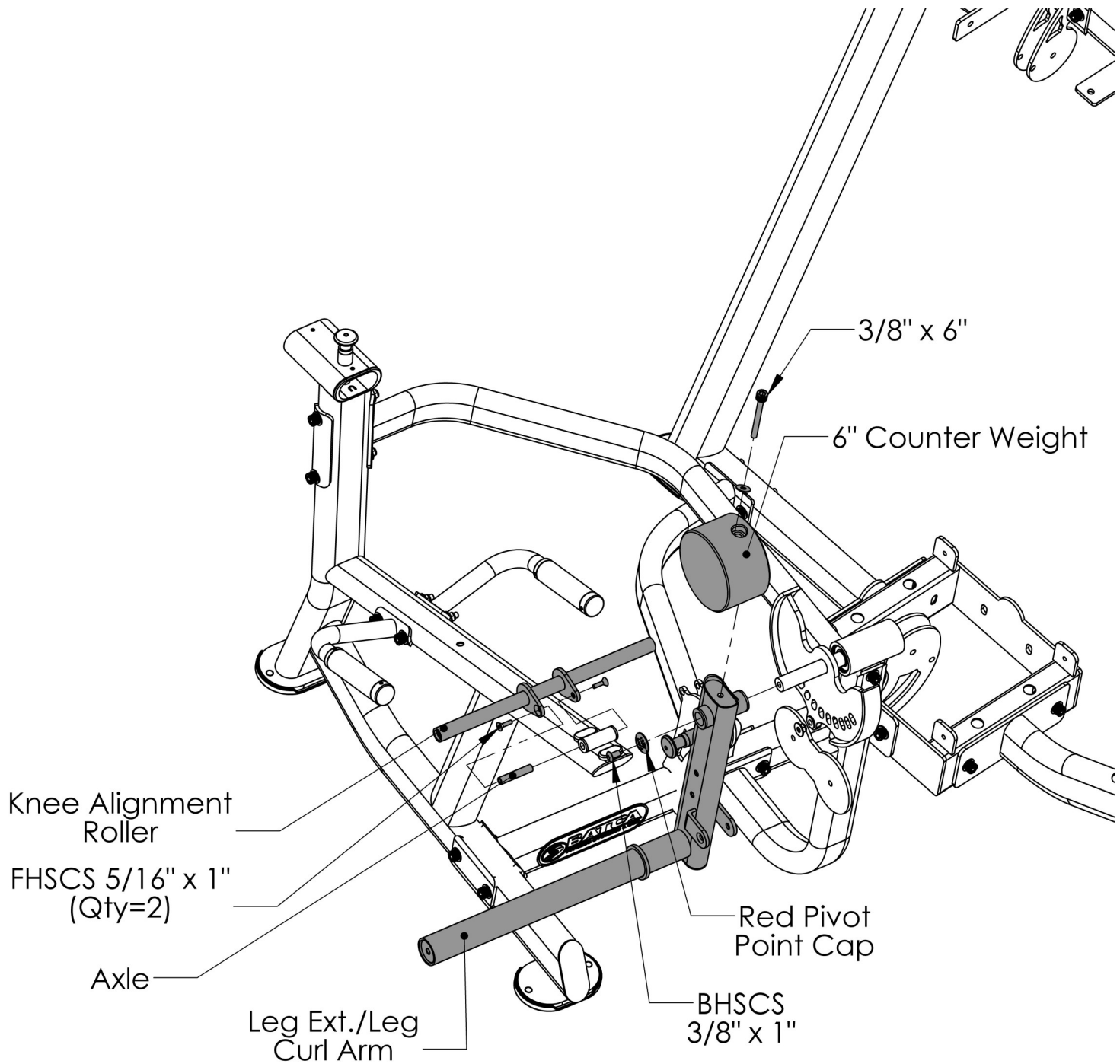
STEP 5:



ALL FLAT WASHERS AND NYLOCKS ARE 3/8" UNLESS OTHERWISE NOTED. ANYWHERE A WASHER IS AGAINST THE ROUND SIDE OF A TUBE THERE IS TO BE A **3/8" CURVED WASHER** INSTEAD OF A **3/8" FLAT WASHER**.

| ITEM # | PART # | DESCRIPTION | QTY |
|--------|-----------|-----------------------|-----|
| 18 | BFP-10873 | LEFT HANDLE | 1 |
| 19 | BFP-10872 | RIGHT HANDLE | 1 |
| 20 | BFP-10867 | LEG EXT./LEG CURL CAM | 1 |
| 58 | BFH-50165 | 1" SNAP RING | 2 |
| 85 | BFP-51799 | SHCS 3/8" x 4 1/4" | 2 |
| 91 | BFH-50204 | 3/8" CURVED WASHER | 4 |
| 92 | BFH-50146 | 3/8" NYLOCK | 2 |

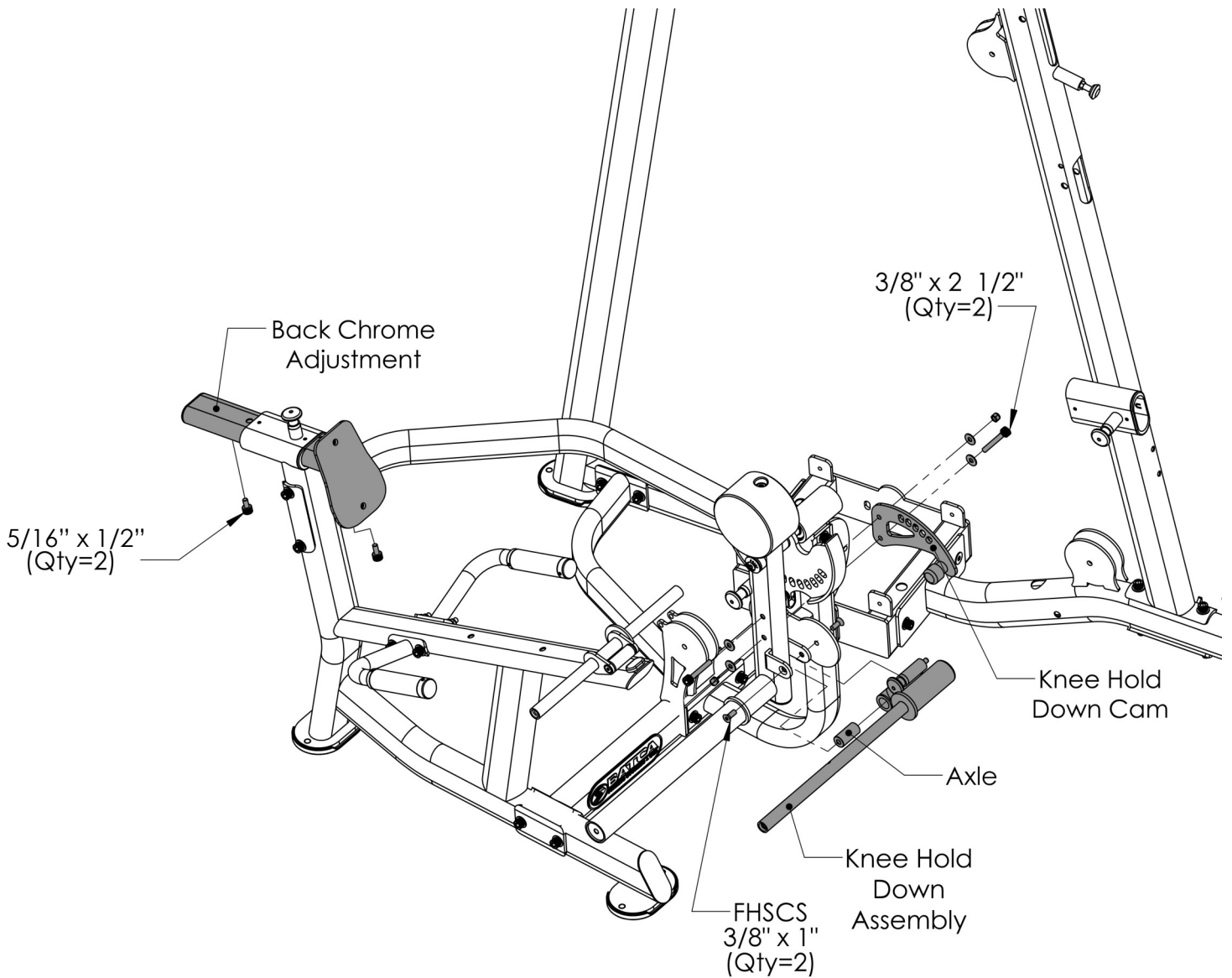
STEP 6:



| ITEM # | PART # | DESCRIPTION | QTY |
|--------|-----------|-----------------------|-----|
| 21 | BFP-10868 | LEG EXT./LEG CURL ARM | 1 |
| 22 | BFP-52364 | 6" COUNTER WEIGHT | 1 |
| 23 | BFP-10871 | KNEE ALIGNMENT ROLLER | 1 |
| 24 | BFP-52177 | AXLE | 1 |
| 59 | BFP-51885 | RED PIVOT POINT CAP | 1 |
| 74 | BFH-50245 | FHSCS 5/16 x 1" | 2 |
| 75 | BFH-50620 | BHSCS 3/8" x 1" | 1 |
| 88 | BFP-52364 | SHCS 3/8" x 6" | 1 |
| 92 | BFH-50146 | 3/8" FLAT WASHER | 1 |

ALL FLAT WASHERS AND NYLOCKS ARE 3/8" UNLESS OTHERWISE NOTED.

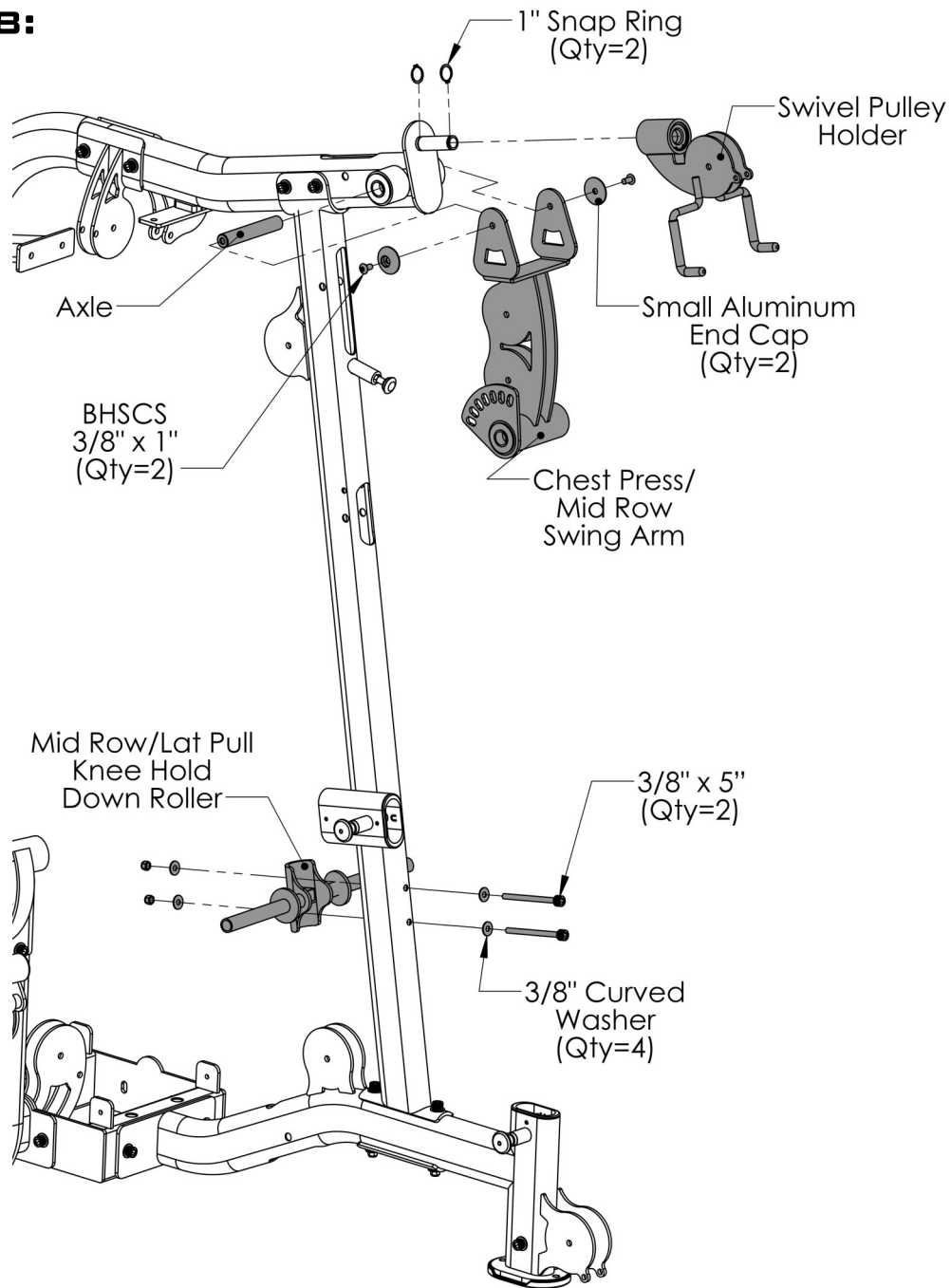
STEP 7:



| ITEM # | PART # | DESCRIPTION | QTY |
|--------|-----------|-------------------------|-----|
| 25 | BFP-10870 | KNEE HOLD DOWN ASSEMBLY | 1 |
| 26 | BFP-52201 | KNEE HOLD DOWN CAM | 1 |
| 27 | BFP-51909 | AXLE | 1 |
| 28 | BFP-10948 | BACK CHROME ADJUSTMENT | 1 |
| 71 | BFP-52372 | SHCS 5/16" x 1/2" | 2 |
| 73 | BFH-50144 | FHSCS 3/8" x 1" | 2 |
| 81 | BFP-52382 | SHCS 3/8" x 2 1/2" | 2 |
| 92 | BFH-50146 | 3/8" FLAT WASHER | 4 |
| 93 | BFH-50157 | 3/8" NYLOCK | 2 |

ALL FLAT WASHERS AND NYLOCKS ARE 3/8" UNLESS OTHERWISE NOTED.

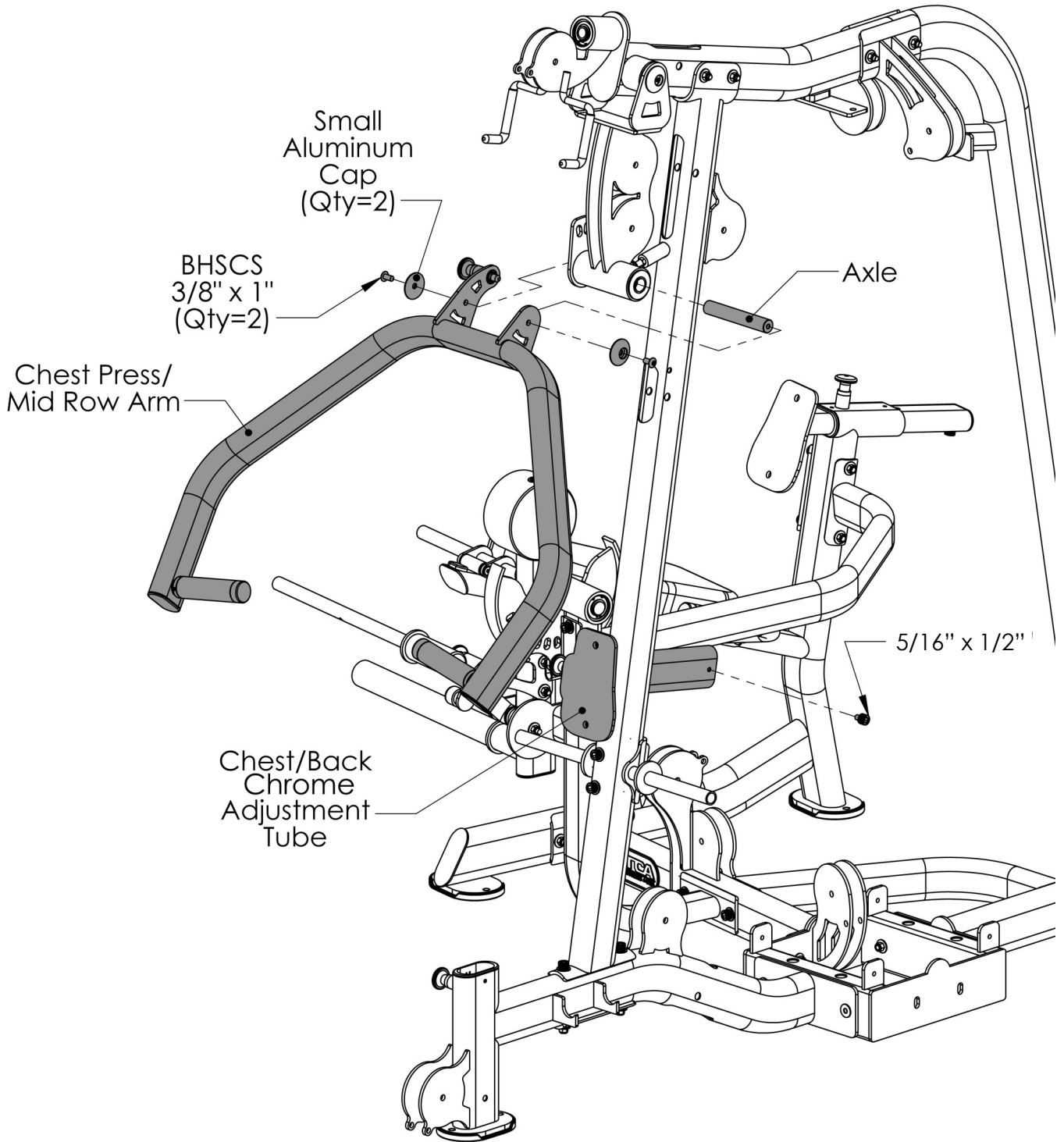
STEP 8:



| ITEM # | PART # | DESCRIPTION | QTY |
|--------|-----------|--|-----|
| 29 | BFP-10978 | CHEST PRESS/MID ROW SWING ARM | 1 |
| 30 | BFP-11018 | MID ROW/LAT PULL KNEE HOLD DOWN ROLLER | 1 |
| 31 | BFP-11017 | SWIVEL PULLEY HOLDER | 1 |
| 32 | BFP-51776 | AXLE | 1 |
| 60 | BFP-51696 | SMALL ALUMINUM END CAP | 2 |
| 58 | BFH-50165 | 1" SNAP RING | 2 |
| 75 | BFH-50620 | BHSCS 3/8" x 1" | 2 |
| 86 | BFP-51799 | SHCS 3/8" x 5" | 2 |
| 91 | BFH-50204 | 3/8" CURVED WASHER | 4 |
| 93 | BFH-50157 | 3/8" NYLOCK | 2 |

ALL FLAT WASHERS AND NYLOCKS ARE 3/8" UNLESS OTHERWISE NOTED. ANYWHERE A WASHER IS AGAINST THE ROUND SIDE OF A TUBE THERE IS TO BE A **3/8" CURVED WASHER** INSTEAD OF A **3/8" FLAT WASHER**.

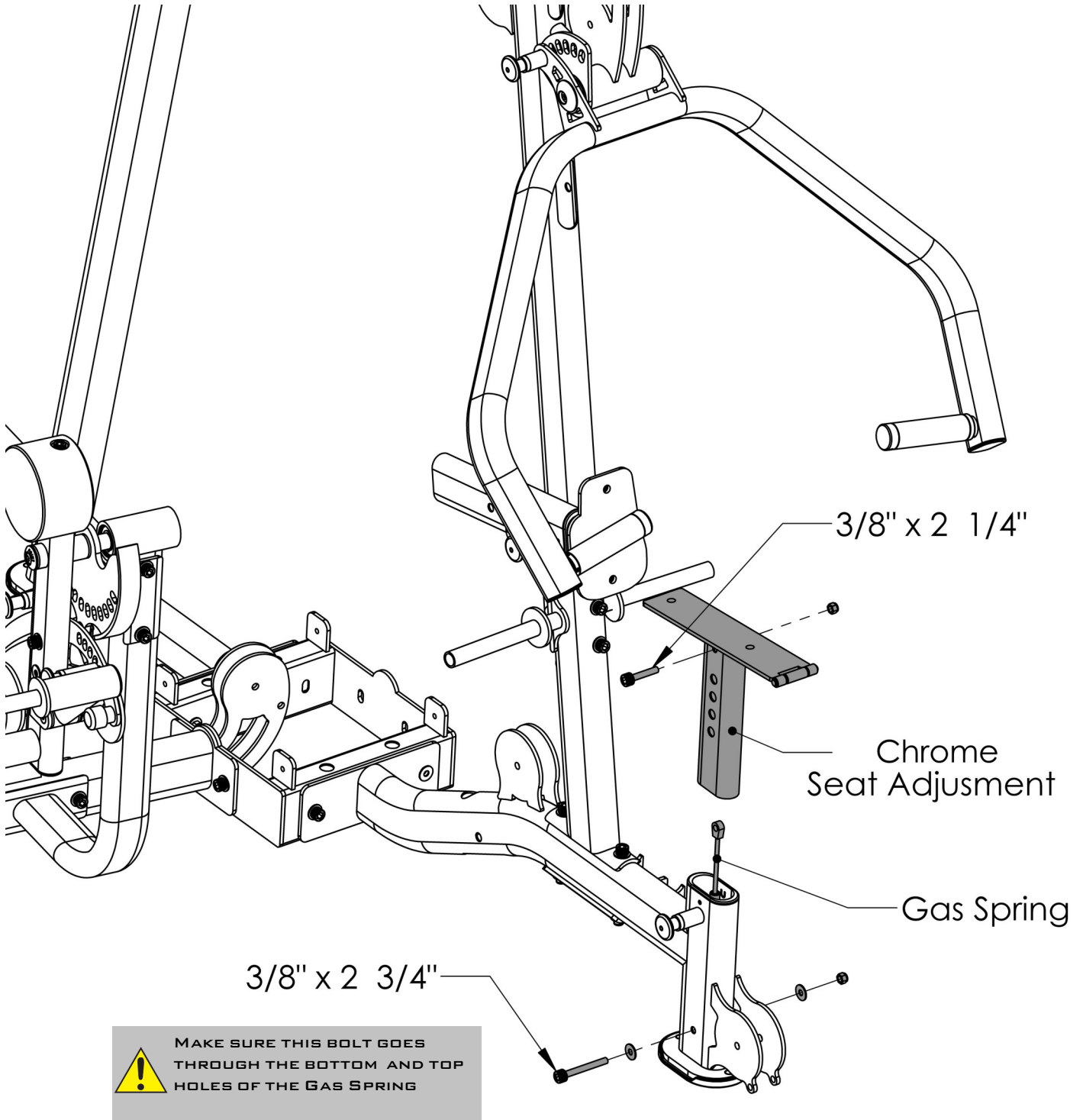
STEP 9:



ALL FLAT WASHERS AND NYLOCKS ARE 3/8" UNLESS OTHERWISE NOTED.

| ITEM # | PART # | DESCRIPTION | QTY |
|--------|-----------|------------------------------|-----|
| 34 | BFP-10979 | CHEST PRESS/MID ROW ARM | 1 |
| 35 | BFP-10980 | CHEST/BACK CHROME ADJUSTMENT | 1 |
| 36 | BFP-52370 | AXLE | 1 |
| 60 | BFP-51696 | SMALL ALUMINUM END CAP | 2 |
| 71 | BFP-52372 | SHCS 5/16" x 1/2" | 1 |
| 75 | BFH-50620 | BHSCS 3/8" x 1" | 2 |

STEP 10:

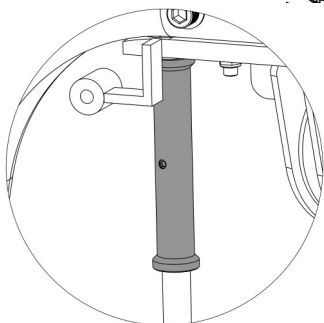
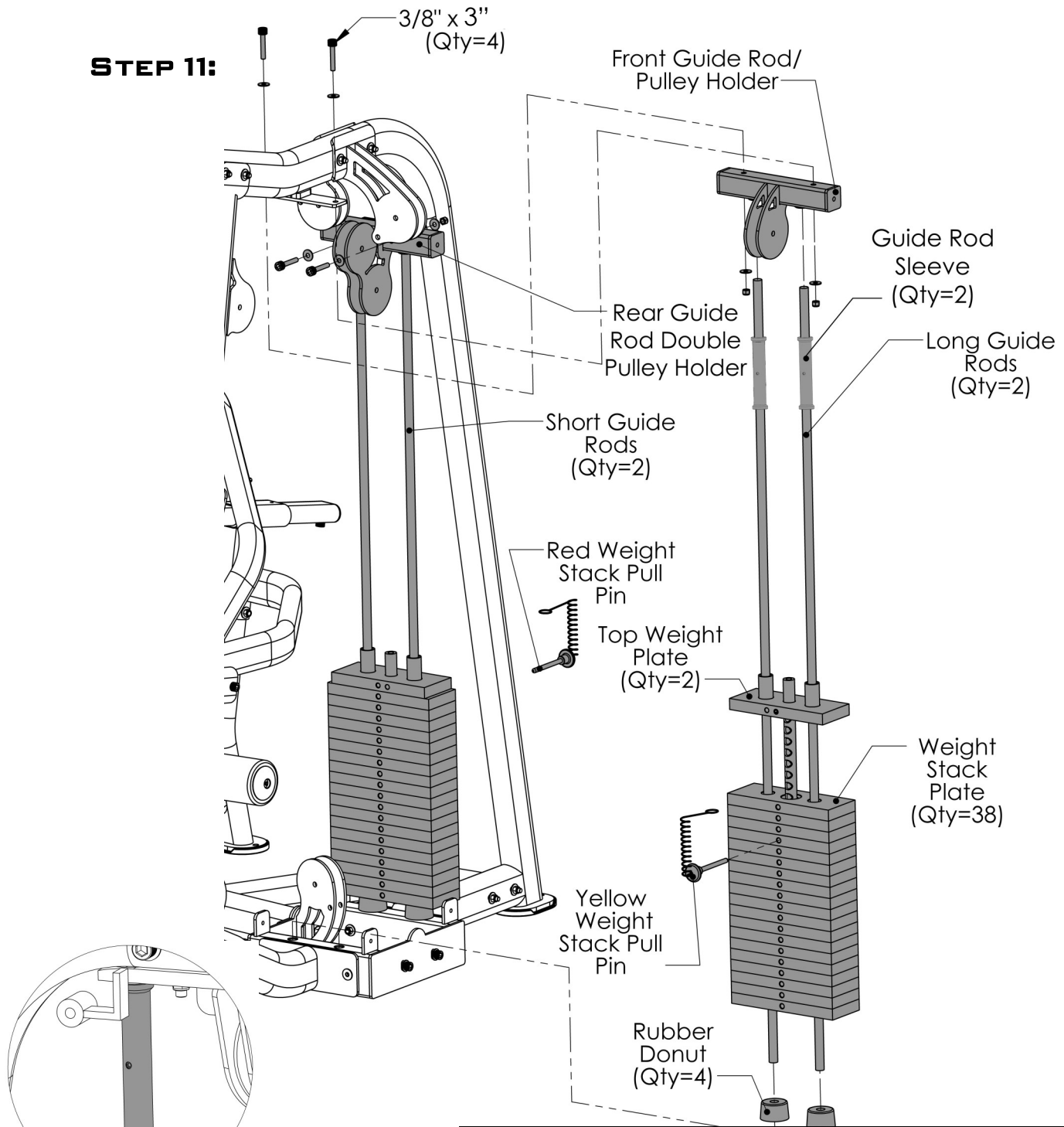


! MAKE SURE THIS BOLT GOES THROUGH THE BOTTOM AND TOP HOLES OF THE GAS SPRING

ALL FLAT WASHERS AND NYLOCKS ARE 3/8" UNLESS OTHERWISE NOTED.

| ITEM # | PART # | DESCRIPTION | QTY |
|--------|-----------|------------------------|-----|
| 37 | BFP-11013 | CHROME SEAT ADJUSTMENT | 1 |
| 61 | BFH-50210 | GAS SPRING | 1 |
| 80 | BFP-51752 | SHCS 3/8" x 2 1/4" | 1 |
| 82 | BFP-51750 | SHCS 3/8" x 2 3/4" | 1 |
| 92 | BFH-50146 | 3/8" FLAT WASHER | 2 |
| 93 | BFH-50157 | 3/8" NYLOCK | 2 |

STEP 11:

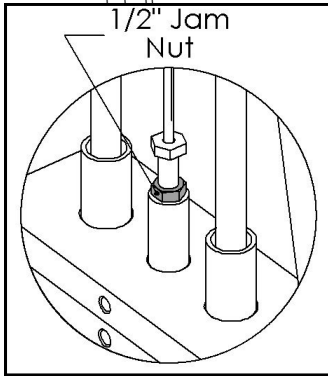
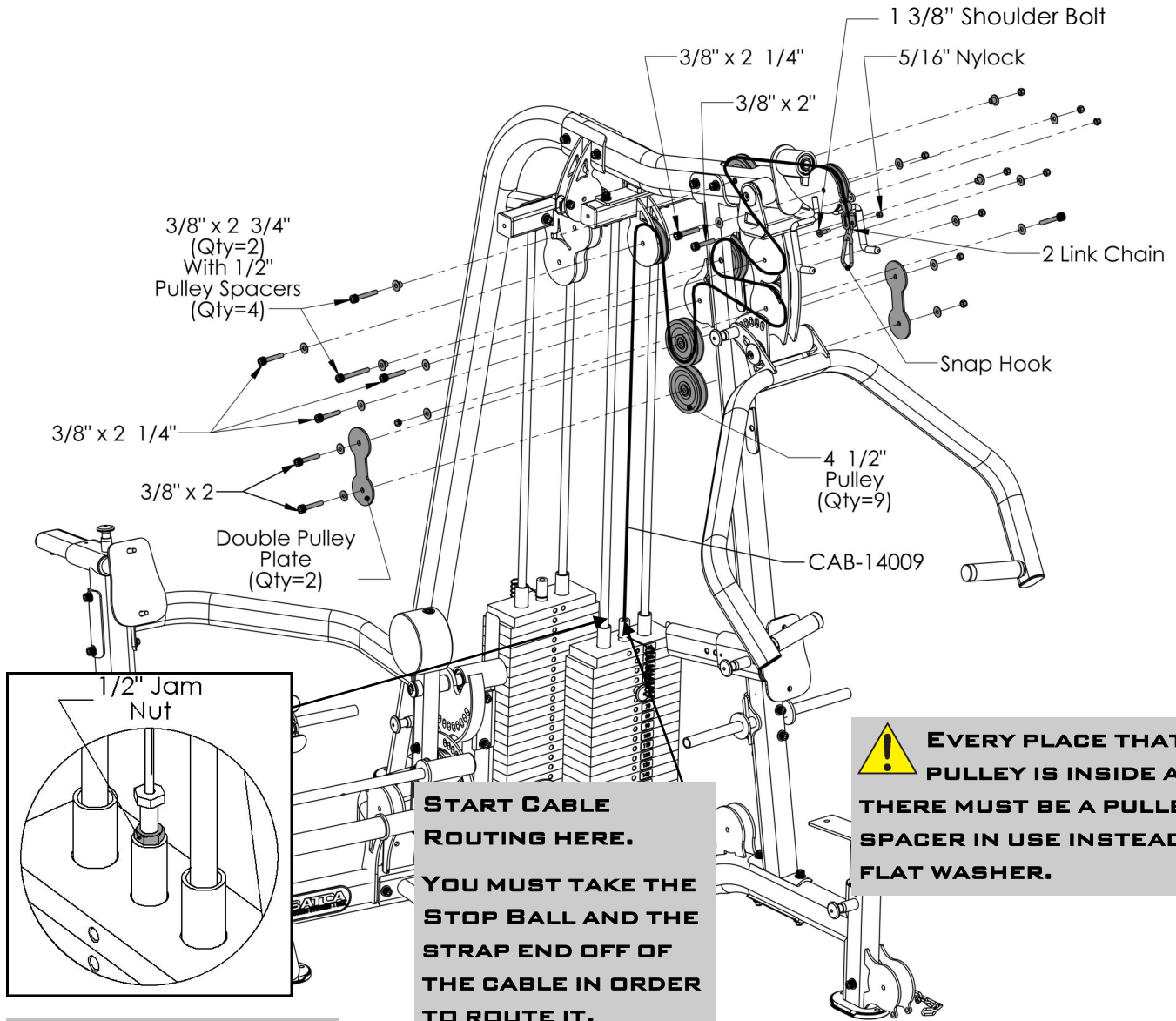


! MAKE SURE THE SCREW IN THE GUIDE ROD SLEEVES IS FACING TOWARDS THE BACK OF THE WEIGHT STACK AND THE SLEEVE IS PUSHED UP AGAINST THE RUBBER GROMMET OF THE GUIDE ROD HOLDER ONCE IT IS IN PLACE TIGHTEN THE SCREW TO KEEP IT IN PLACE.

ALL FLAT WASHERS AND NYLOCKS ARE 3/8" UNLESS OTHERWISE NOTED.

| ITEM # | PART # | DESCRIPTION | QTY |
|--------|-----------|--------------------------------------|-----|
| 38 | BFP-10976 | FRONT GUIDE ROD/PULLEY HOLDER | 1 |
| 39 | BFP-10977 | REAR GUIDE ROD/PULLEY HOLDER | 1 |
| 40 | BFP-52227 | LONG GUIDE ROD | 2 |
| 41 | BFP-52226 | SHORT GUIDE ROD | 2 |
| 42 | BFM-10299 | TOP WEIGHT PLATE | 2 |
| 43 | BFM-50256 | WEIGHT STACK PLATE | 38 |
| 44 | BFP-52143 | RUBBER DONUT | 4 |
| 53 | BFP-52383 | GUIDE ROD SLEEVE | 2 |
| 54 | BFM-51173 | RED AND YELLOW WEIGHT STACK PULL PIN | 2 |
| 84 | BFP-51747 | SHCS 3/8" x 3" | 4 |
| 92 | BFH-50146 | 3/8" FLAT WASHER | 8 |
| 93 | BFH-50157 | 3/8" NYLOCK | 4 |

STEP 12:

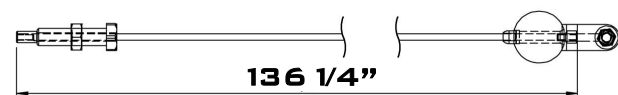


NOTE: THE THREADED BOLT ON THE END OF THE CABLE **MUST BE THREADED AT LEAST 1/2"** THE TOP PLATE OF THE WEIGHT STACK. THE BOLT MUST ALSO BE SECURED WITH A 1/2" JAM NUT TO ENSURE A SAFE AND PROPER CONNECTION.

START CABLE ROUTING HERE. YOU MUST TAKE THE STOP BALL AND THE STRAP END OFF OF THE CABLE IN ORDER TO ROUTE IT.

EVERY PLACE THAT A PULLEY IS INSIDE A TUBE THERE MUST BE A PULLEY SPACER IN USE INSTEAD OF A FLAT WASHER.

CAB-14009

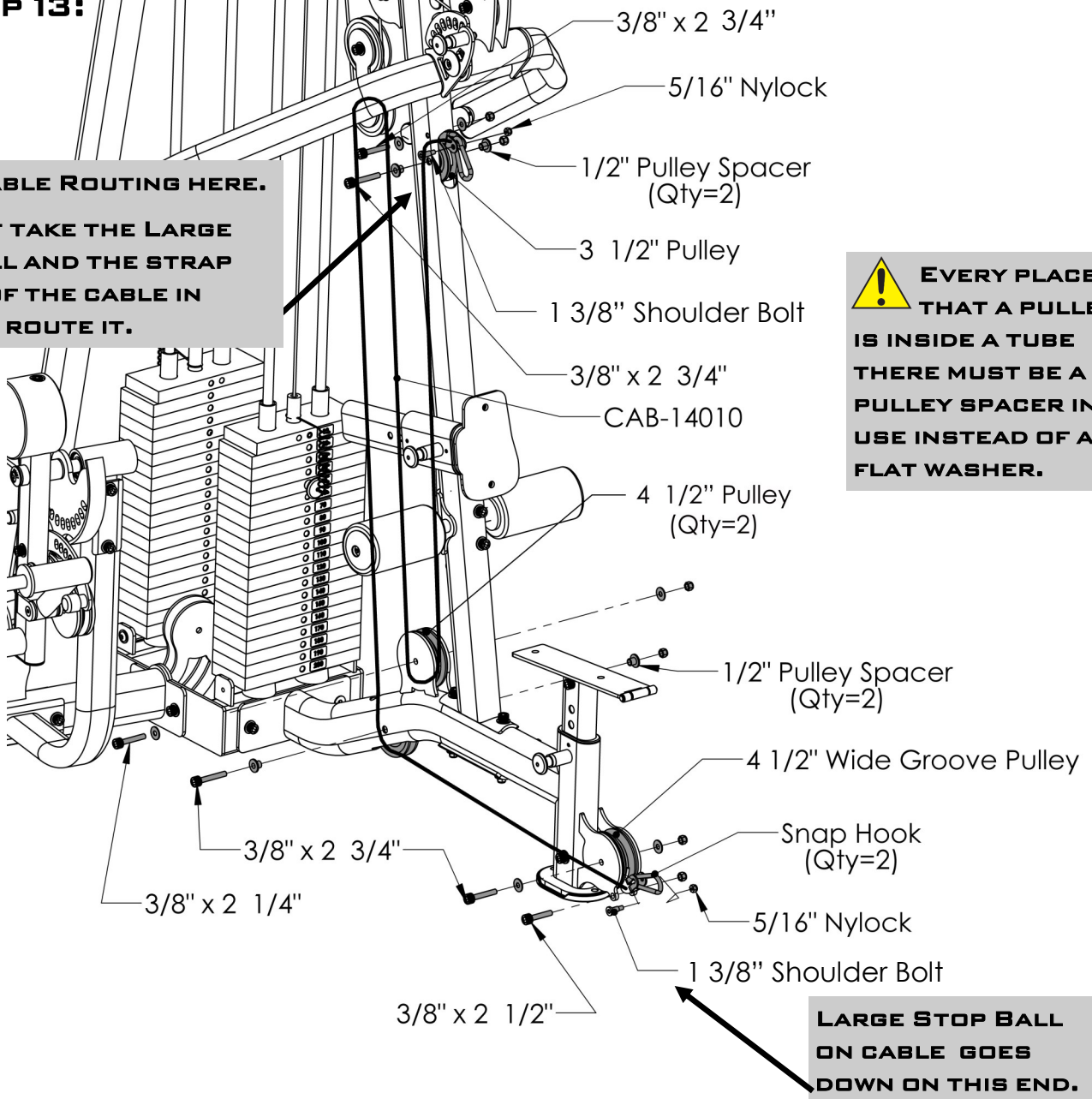


ALL FLAT WASHERS AND NYLOCKS ARE 3/8" UNLESS OTHERWISE NOTED.

| ITEM # | PART # | DESCRIPTION | QTY |
|--------|-------------|-------------------------------|-----|
| 99 | CAB-14009 | WEIGHT STACK TO SWIVEL PULLEY | 1 |
| 45 | BFP-52165 | DOUBLE PULLEY PLATE | 2 |
| 62 | 2xBFC-50128 | 2 LINK CHAIN | 1 |
| 65 | BFH-50188 | SNAP HOOK | 1 |
| 69 | BFH-50174 | 4 1/2" PULLEY | 9 |
| 67 | BFP51746- | 1/2" PULLEY SPACERS | 4 |
| 77 | BFH-50351 | 1 3/8" SHOULDER BOLT | 1 |
| 79 | BFP-51759 | SHCS 3/8" x 2" | 3 |
| 80 | BFP-51752 | SHCS 3/8" x 2 1/4" | 5 |
| 82 | BFP-51750 | SHCS 3/8" x 2 3/4" | 2 |
| 89 | BFH-50267 | 5/16" NYLOCK | 1 |
| 92 | BFH-50146 | 3/8" FLAT WASHER | 14 |
| 93 | BFH-50157 | 3/8" NYLOCK | 10 |

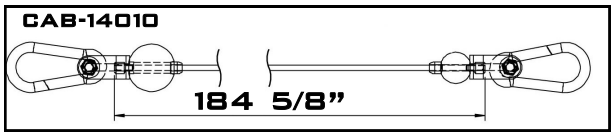
STEP 13:

START CABLE ROUTING HERE. YOU MUST TAKE THE LARGE STOP BALL AND THE STRAP END OFF OF THE CABLE IN ORDER TO ROUTE IT.



EVERY PLACE THAT A PULLEY IS INSIDE A TUBE THERE MUST BE A PULLEY SPACER IN USE INSTEAD OF A FLAT WASHER.

LARGE STOP BALL ON CABLE GOES DOWN ON THIS END.



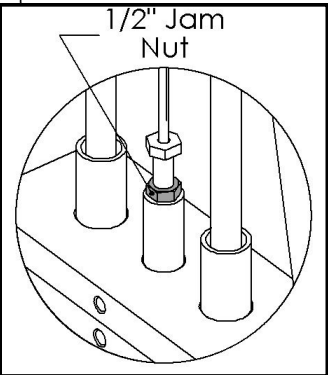
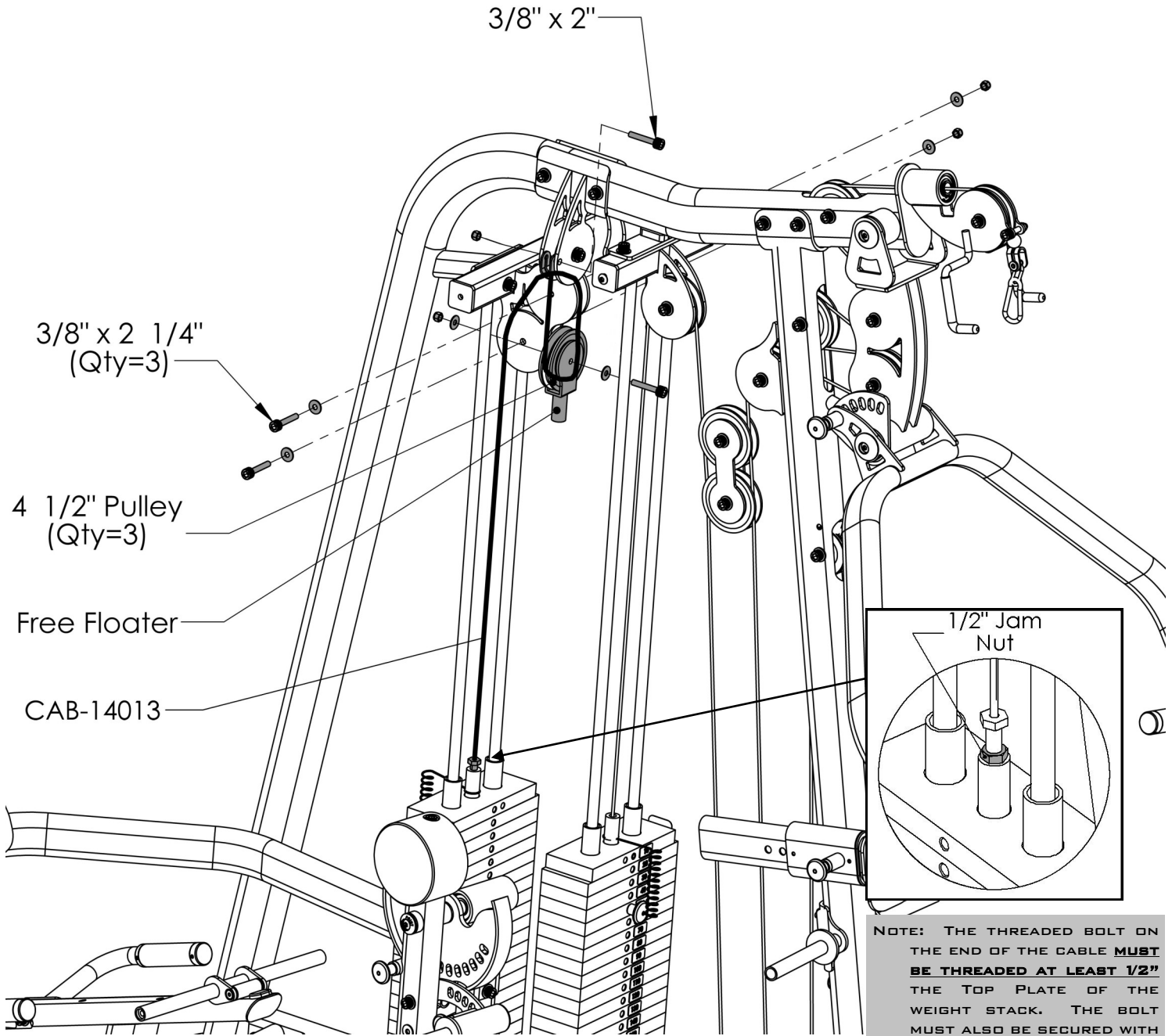
ALL FLAT WASHERS AND NYLOCKS ARE 3/8\"/>

| ITEM # | PART # | DESCRIPTION | QTY |
|--------|-----------|--------------------------|-----|
| 100 | CAB-14010 | LOW PULLEY TO MID PULLEY | 1 |
| 65 | BFH-50188 | SNAP HOOK | 2 |
| 67 | BFP-51746 | 1/2\"/> | |
| 68 | BFH-50173 | 3 1/2\"/> | |
| 69 | BFH-50174 | 4 1/2\"/> | |
| 70 | BFP-52157 | 4 1/2\"/> | |
| 77 | BFH-50351 | 1 3/8\"/> | |
| 80 | BFP-51752 | SHCS 3/8\"/> | |
| 81 | BFP-52382 | SHCS 3/8\"/> | |
| 82 | BFP-51750 | SHCS 3/8\"/> | |
| 89 | BFH-50267 | 5/16\"/> | |
| 92 | BFH-50146 | 3/8\"/> | |
| 93 | BFH-50157 | 3/8\"/> | |

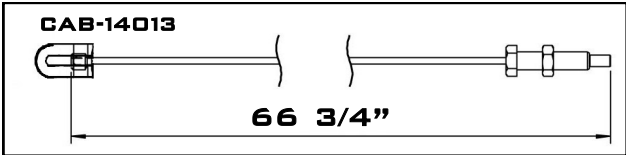
STEP 14:



SKIP THIS STEP IF LEG PRESS WAS PURCHASED.



NOTE: THE THREADED BOLT ON THE END OF THE CABLE **MUST BE THREADED AT LEAST 1/2"** THE TOP PLATE OF THE WEIGHT STACK. THE BOLT MUST ALSO BE SECURED WITH A 1/2" JAM NUT TO ENSURE A SAFE AND PROPER CONNECTION.



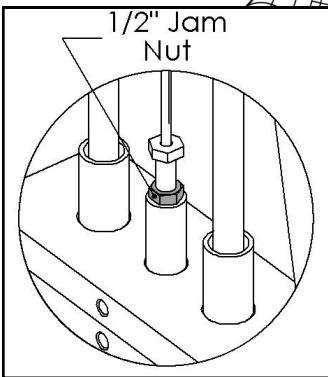
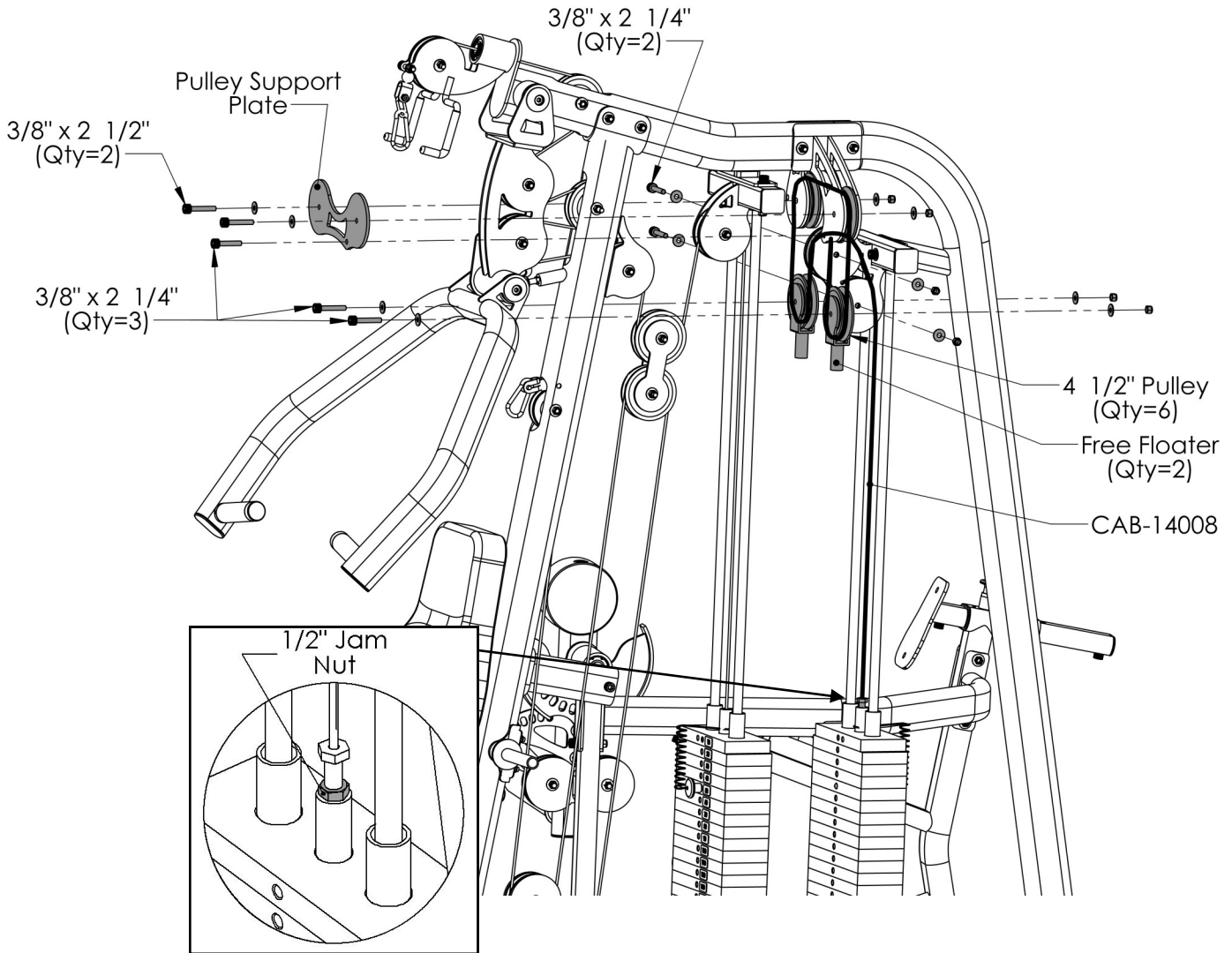
| ITEM # | PART # | DESCRIPTION | QTY |
|--------|-----------|-------------------------|-----|
| 101 | CAB-14013 | WEIGHT STACK TO LOCKOUT | 1 |
| 46 | BFP-10838 | FREE FLOATER | 1 |
| 69 | BFH-50174 | 4 1/2" PULLEY | 3 |
| 79 | BFP-51759 | SHCS 3/8" x 2" | 1 |
| 80 | BFP-51752 | SHCS 3/8" x 2 1/4" | 3 |
| 92 | BFH-50146 | 3/8" FLAT WASHER | 6 |
| 93 | BFH-50157 | 3/8" NYLOCK | 4 |

ALL FLAT WASHERS AND NYLOCKS ARE 3/8" UNLESS OTHERWISE NOTED.

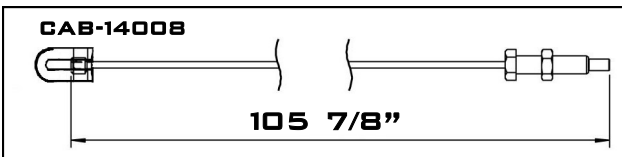
STEP 14A:



SKIP THIS STEP IF LEG PRESS WAS NOT PURCHASED.



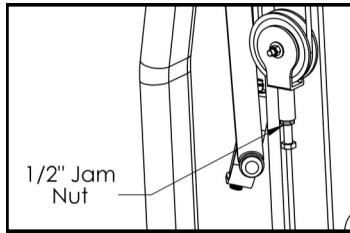
NOTE: THE THREADED BOLT ON THE END OF THE CABLE **MUST BE THREADED AT LEAST 1/2"** THE TOP PLATE OF THE WEIGHT STACK. THE BOLT MUST ALSO BE SECURED WITH A 1/2" JAM NUT TO ENSURE A SAFE AND PROPER CONNECTION.



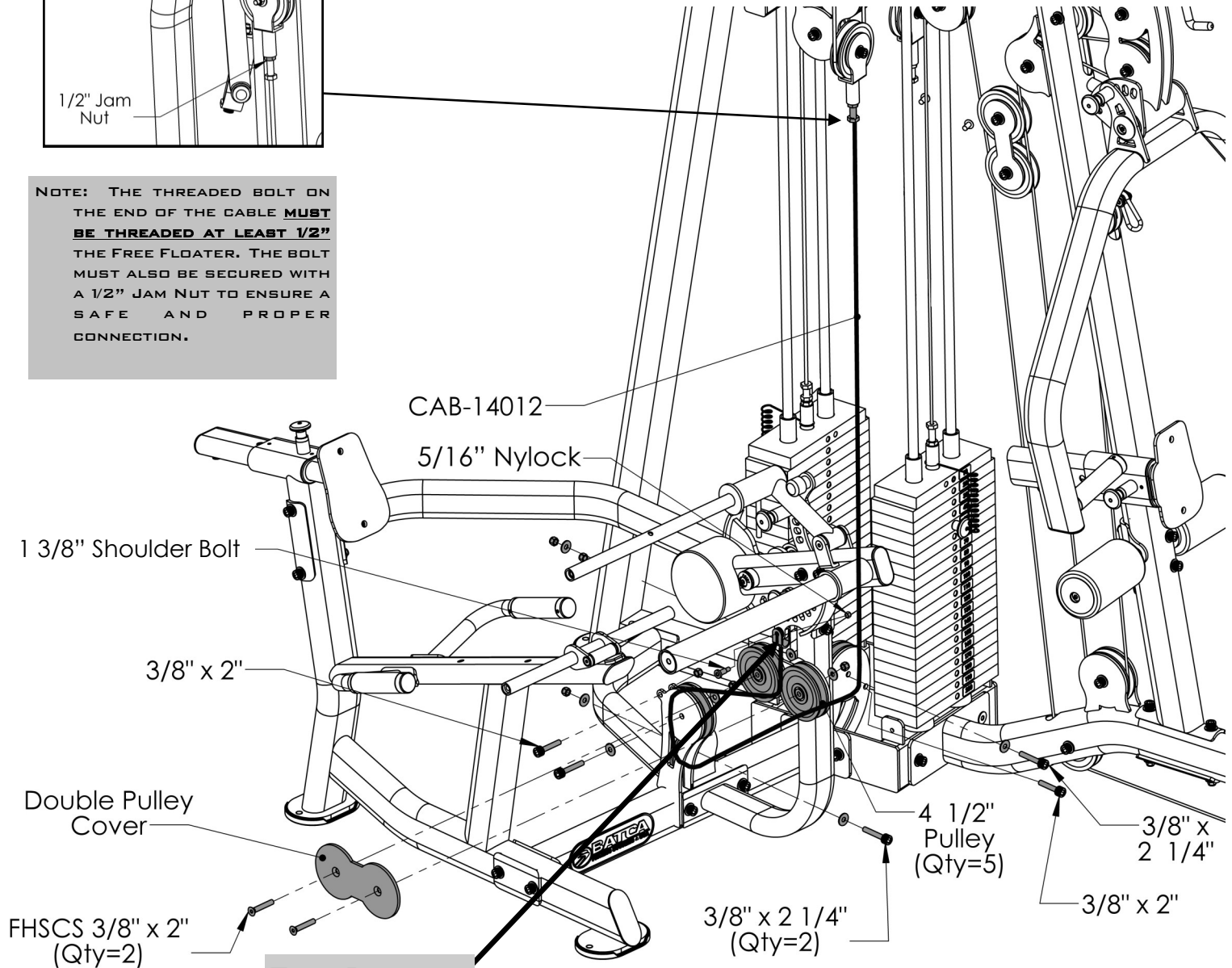
| ITEM # | PART # | DESCRIPTION | QTY |
|--------|-----------|--|-----|
| 139 | CAB-14008 | WEIGHT STACK TO LEG PRESS FREE FLOATER | 1 |
| 46 | BFP-10838 | FREE FLOATER | 2 |
| 106 | BFP-52355 | PULLEY SUPPORT PLATE | 1 |
| 120 | BFH-50174 | 4 1/2" PULLEY | 6 |
| 80 | BFP-51752 | SHCS 3/8" 2 1/4" | 5 |
| 129 | BFP-52382 | SHCS 3/8" x 2 1/2" | 2 |
| 92 | BFH-50146 | 3/8" FLAT WASHER | 12 |
| 93 | BFH-50157 | 3/8" NYLOCK | 7 |

ALL FLAT WASHERS AND NYLOCKS ARE 3/8" UNLESS OTHERWISE NOTED.

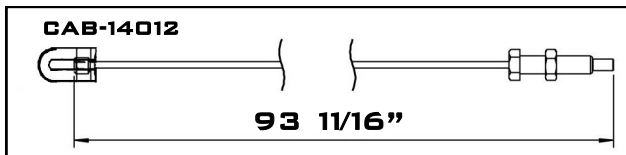
STEP 15:



NOTE: THE THREADED BOLT ON THE END OF THE CABLE **MUST BE THREADED AT LEAST 1/2"** THE FREE FLOATER. THE BOLT MUST ALSO BE SECURED WITH A 1/2" JAM NUT TO ENSURE A SAFE AND PROPER CONNECTION.



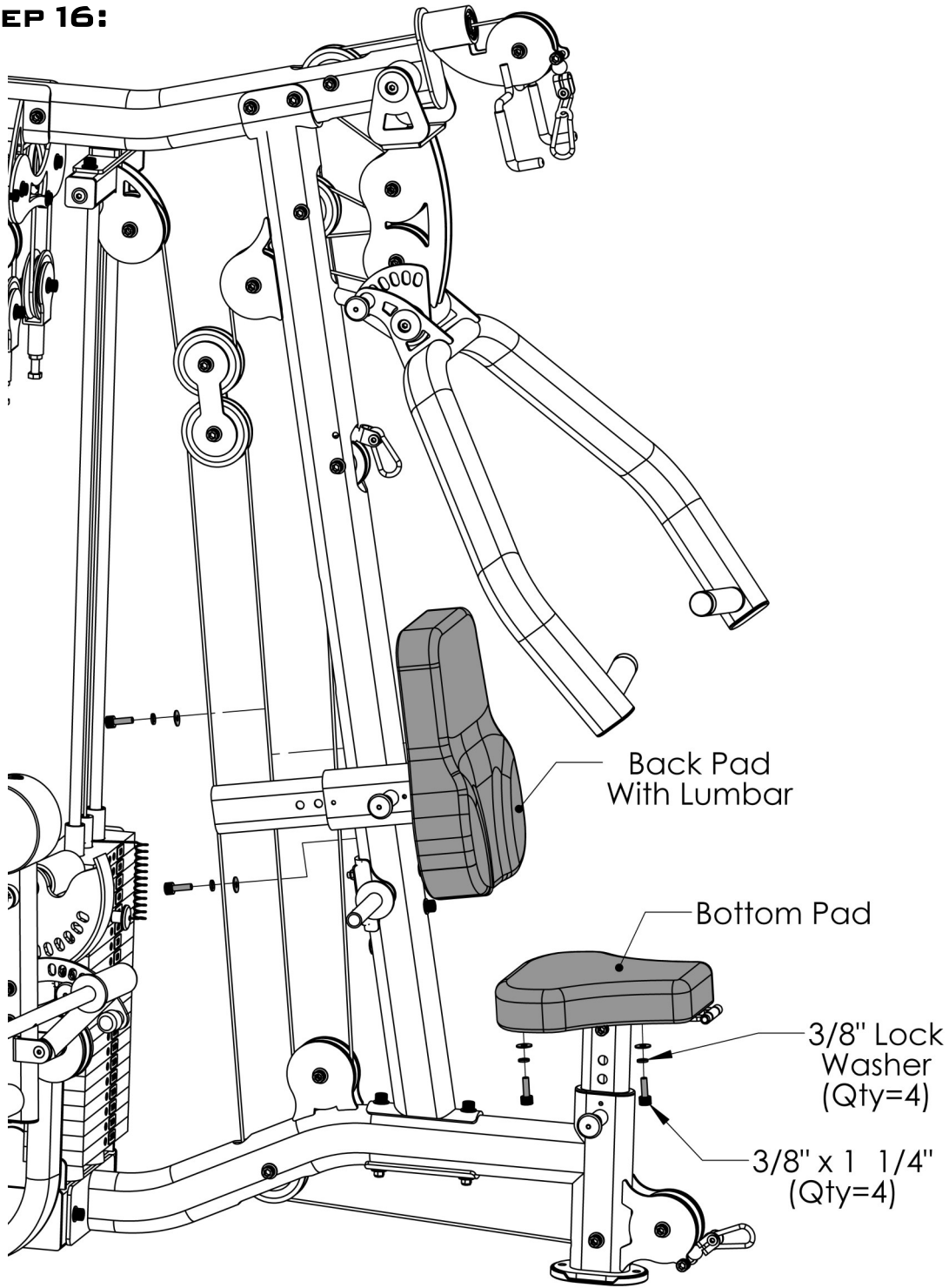
TAKE STRAP END OFF OF CABLE FOR EASY ROUTING.



ALL FLAT WASHERS AND NYLOCKS ARE 3/8" UNLESS OTHERWISE NOTED.

| ITEM # | PART # | DESCRIPTION | QTY |
|--------|-----------|--------------------------------|-----|
| 102 | CAB-14012 | FREE FLOATER LEG EXTENSION CAM | 1 |
| 47 | BFP-51883 | DOUBLE PULLEY COVER | 1 |
| 69 | BFH-50174 | 4 1/2" PULLEY | 5 |
| 77 | BFH-50351 | 1 3/8" SHOULDER BOLT | 1 |
| 78 | BFP-52377 | FHSCS 3/8" x 2" | 2 |
| 79 | BFP-51759 | SHCS 3/8" x 2" | 2 |
| 80 | BFP-51752 | SHCS 3/8" x 2 1/4" | 3 |
| 89 | BFH-50267 | 5/16" NYLOCK | 1 |
| 92 | BFH-50146 | 3/8" FLAT WASHER | 8 |
| 93 | BFH-50157 | 3/8" NYLOCK | 7 |

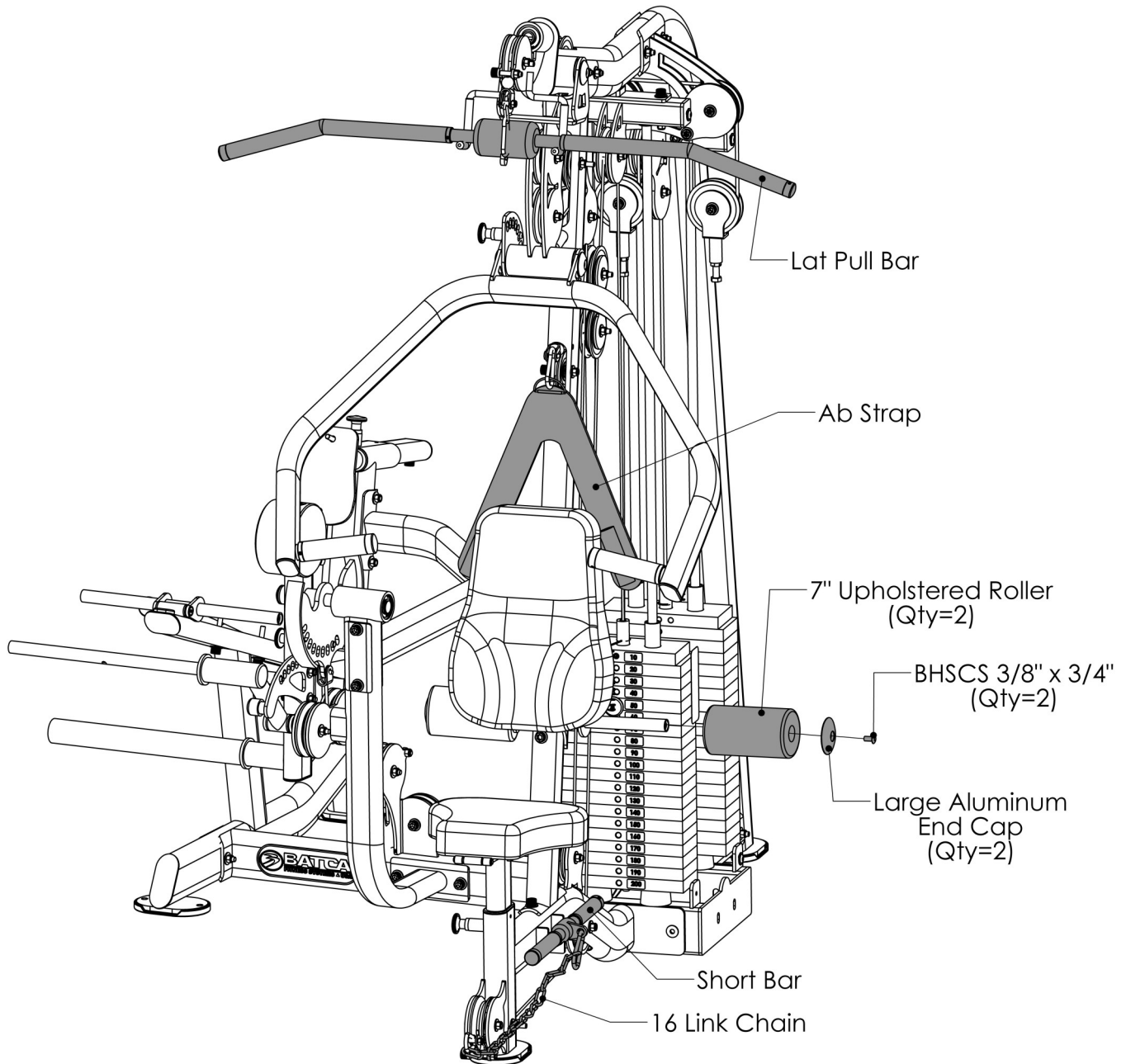
STEP 16:



ALL FLAT WASHERS AND NYLOCKS ARE 3/8" UNLESS OTHERWISE NOTED.

| ITEM # | PART # | DESCRIPTION | QTY |
|--------|-----------|----------------------|-----|
| 94 | BFP-52136 | BACK PAD WITH LUMBAR | 1 |
| 95 | BFP-52141 | BOTTOM PAD | 1 |
| 76 | BFP-51653 | SHCS 3/8" x 1 1/4" | 4 |
| 90 | BFH-50147 | 3/8" LOCK WASHER | 4 |
| 92 | BFH-50146 | 3/8" FLAT WASHER | 4 |

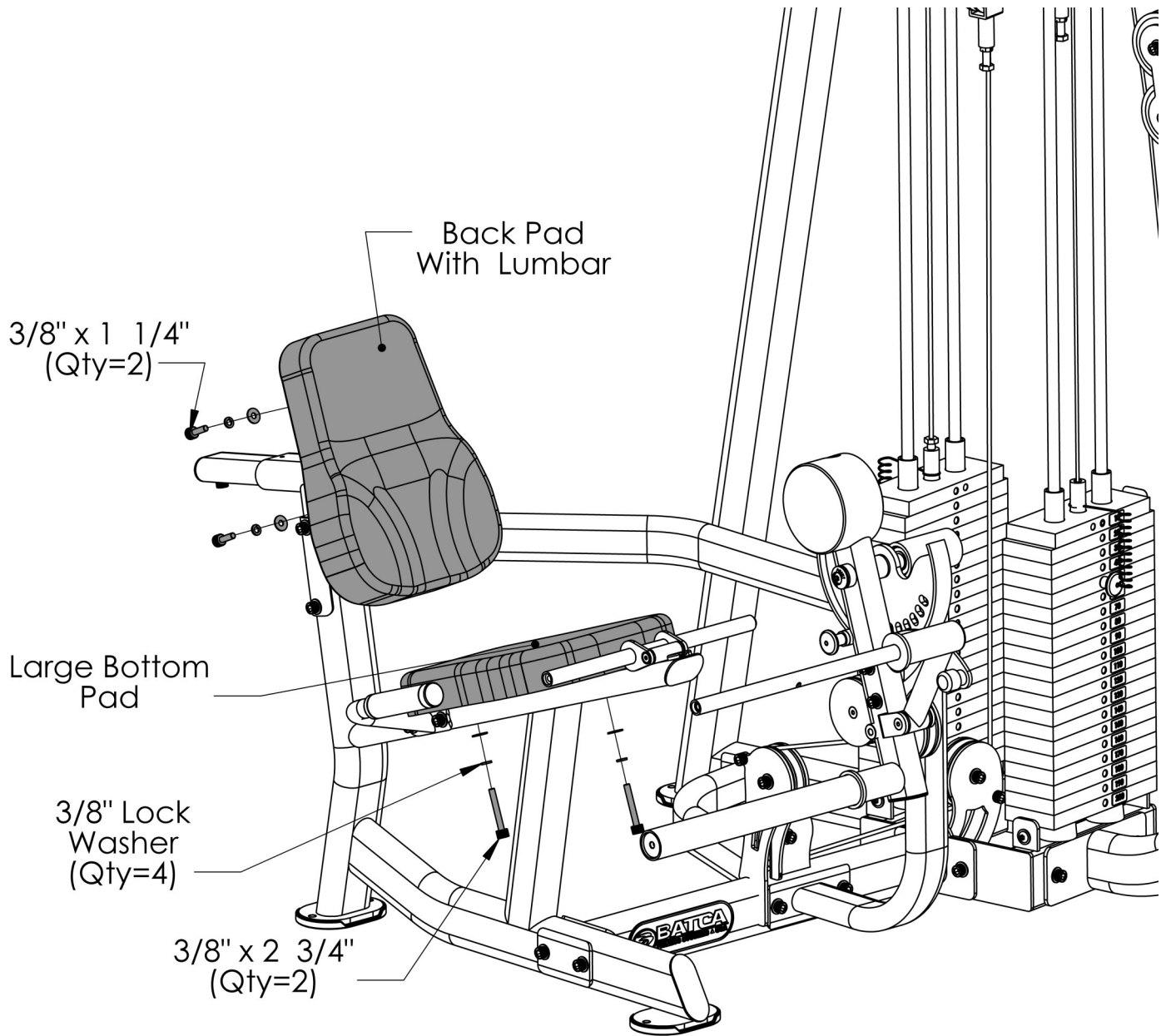
STEP 17:



| ITEM # | PART # | DESCRIPTION | QTY |
|--------|--------------|------------------------|-----|
| 96 | BFU-10121 | 7" UPHOLSTERED ROLLER | 2 |
| 55 | BFC-50122 | AB STRAP | 1 |
| 56 | BFC-50125 | LAT PULL BAR | 1 |
| 57 | BFC-50126 | SHORT BAR | 1 |
| 63 | 14xBFC-50128 | 14 LINK CHAIN | 1 |
| 64 | BFH-50622 | LARGE ALUMINUM END CAP | 2 |
| 72 | BFP-52430 | BHSCS 3/8" x 3/4" | 2 |

ALL FLAT WASHERS AND NYLOCKS ARE 3/8" UNLESS OTHERWISE NOTED.

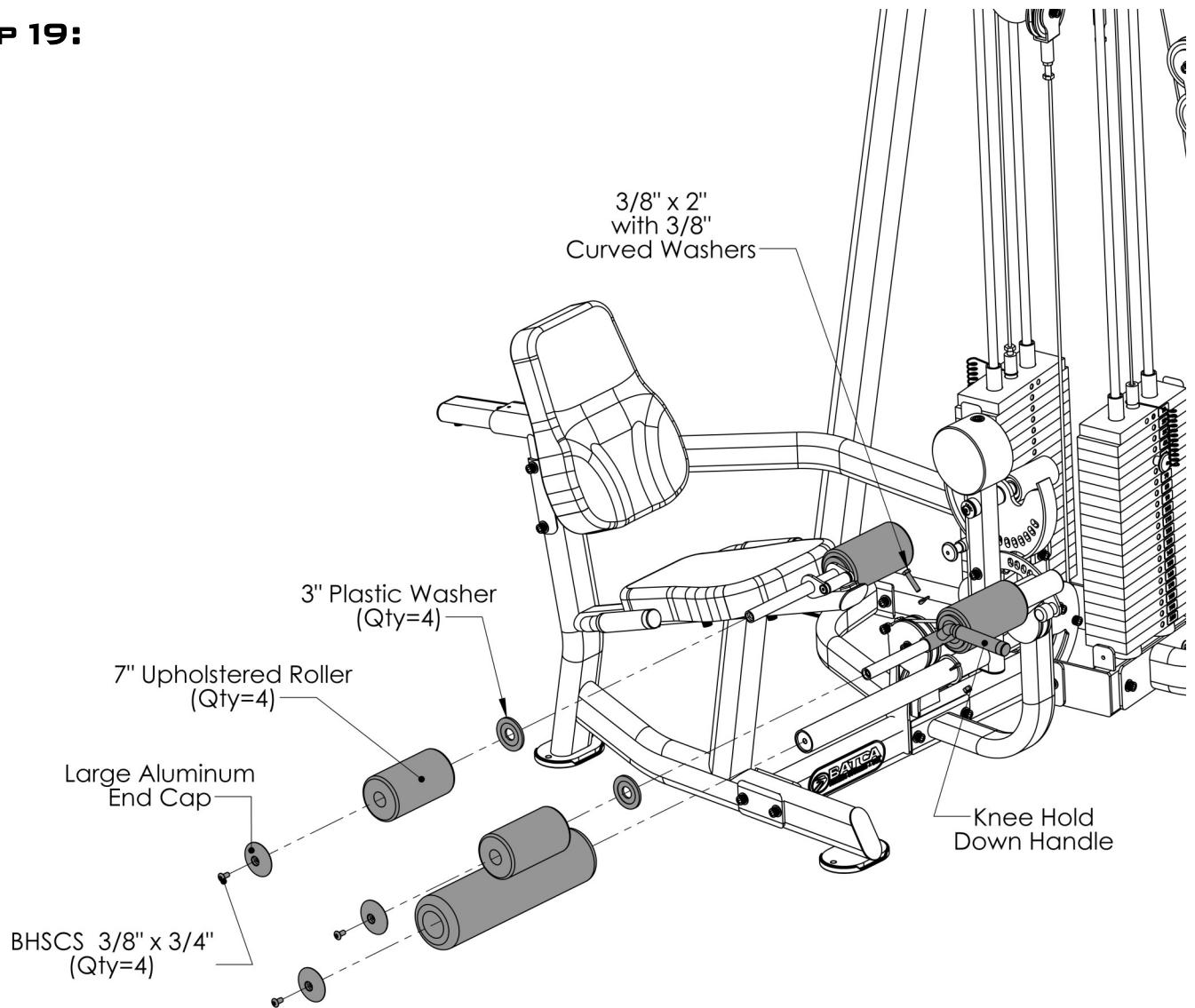
STEP 18:



| ITEM # | PART # | DESCRIPTION | QTY |
|--------|-----------|----------------------|-----|
| 94 | BFP-52136 | BACK PAD WITH LUMBAR | 1 |
| 97 | BFP-52130 | LARGE BOTTOM PAD | 1 |
| 76 | BFP-51653 | SHCS 3/8" x 1 1/4" | 2 |
| 82 | BFP-51750 | SHCS 3/8" x 2 3/4" | 2 |
| 90 | BFH-50147 | 3/8" LOCK WASHER | 4 |
| 92 | BFH-50146 | 3/8" FLAT WASHER | 4 |

ALL FLAT WASHERS AND NYLOCKS ARE 3/8" UNLESS OTHERWISE NOTED.

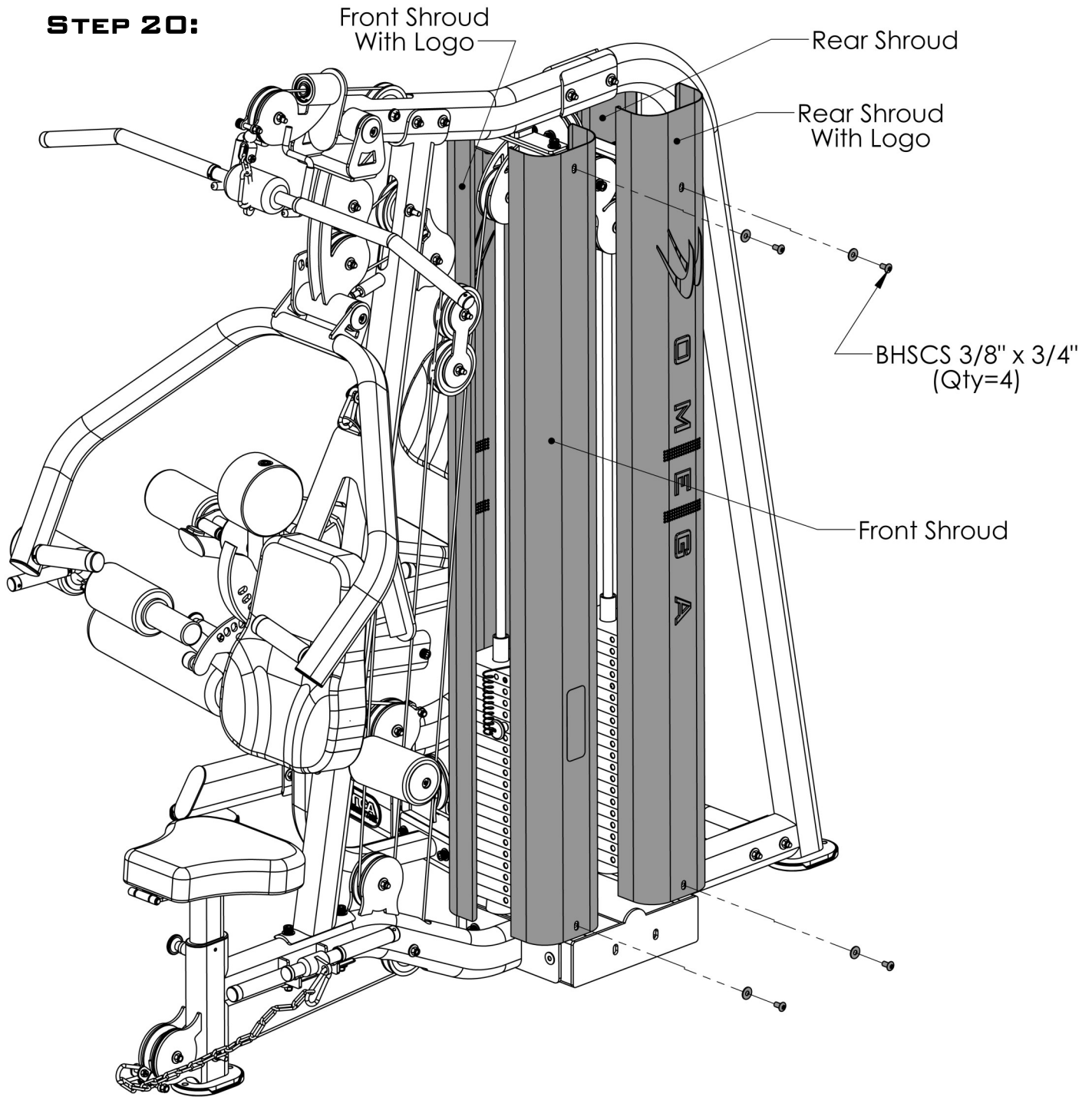
STEP 19:



| ITEM # | PART # | DESCRIPTION | QTY |
|--------|-----------|------------------------|-----|
| 96 | BFU-10121 | 7" UPHOLSTERED ROLLER | 4 |
| 98 | BFU-10122 | 17" UPHOLSTERED ROLLER | 1 |
| 48 | BFM-10588 | KNEE HOLD DOWN HANDLE | 1 |
| 64 | BFH-50622 | LARGE ALUMINUM END CAP | 4 |
| 66 | BFH-50221 | 3" PLASTIC WASHER | 4 |
| 72 | BFP-52430 | BHSCS 3/8" x 3/4" | 4 |
| 79 | BFP-51759 | SHCS 3/8" x 2" | 1 |
| 91 | BFH-50204 | 3/8" CURVED WASHER | 2 |
| 93 | BFH-50157 | 3/8" NYLOCK | 1 |

ALL FLAT WASHERS AND NYLOCKS ARE 3/8" UNLESS OTHERWISE NOTED.

STEP 20:

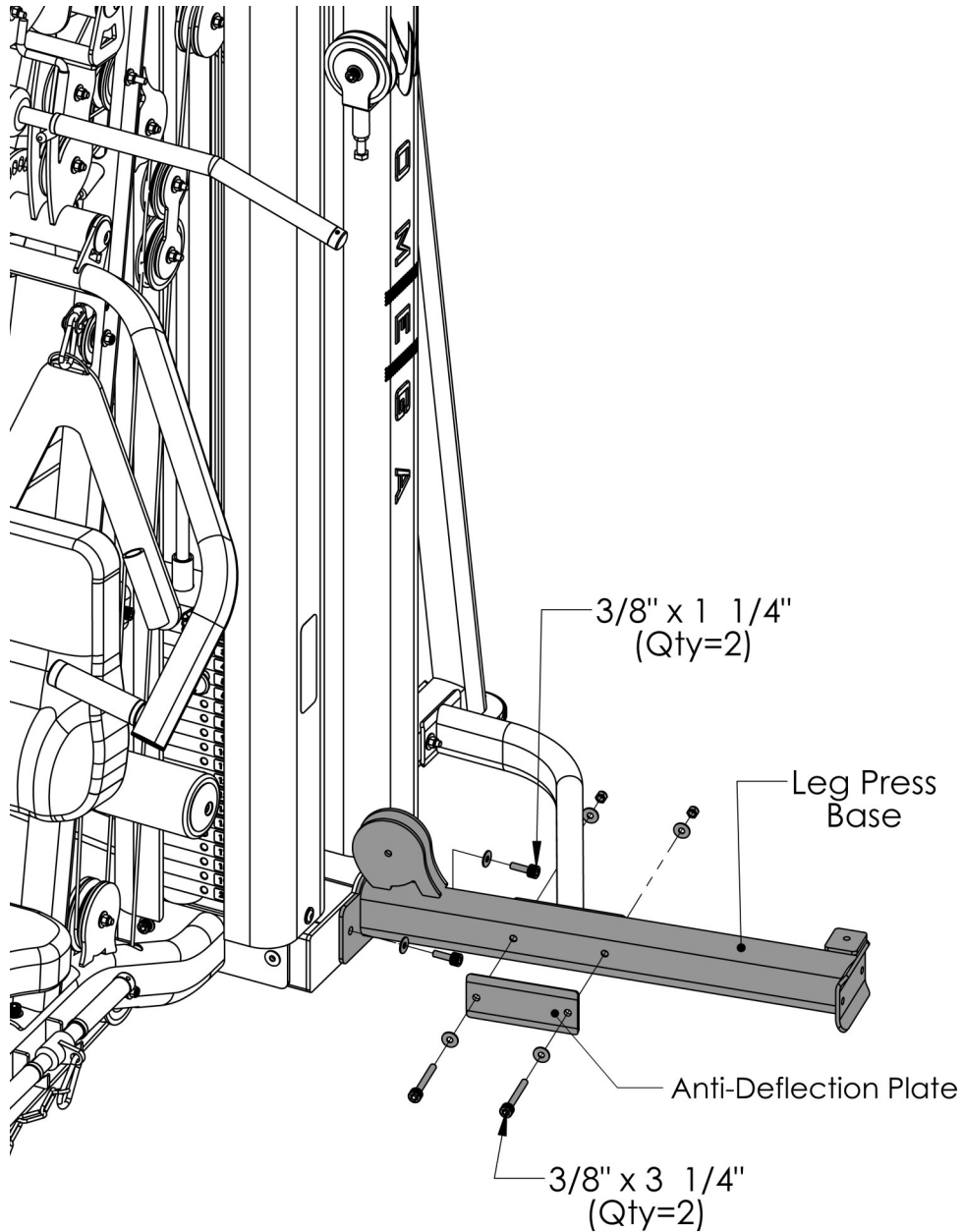


ALL FLAT WASHERS AND NYLOCKS ARE 3/8"
UNLESS OTHERWISE NOTED.

| ITEM # | PART # | DESCRIPTION | QTY |
|--------|-----------|------------------------|-----|
| 49 | BFP-52267 | FRONT SHROUD WITH LOGO | 1 |
| 50 | BFP-52269 | REAR SHROUD WITH LOGO | 1 |
| 51 | BFP-52268 | FRONT SHROUD | 1 |
| 52 | BFP-52271 | REAR SHROUD | 1 |
| 72 | BFP-52430 | BHSCS 3/8" x 3/4" | 8 |
| 92 | BFH-50146 | 3/8" FLAT WASHER | 8 |

LEG PRESS OPTION

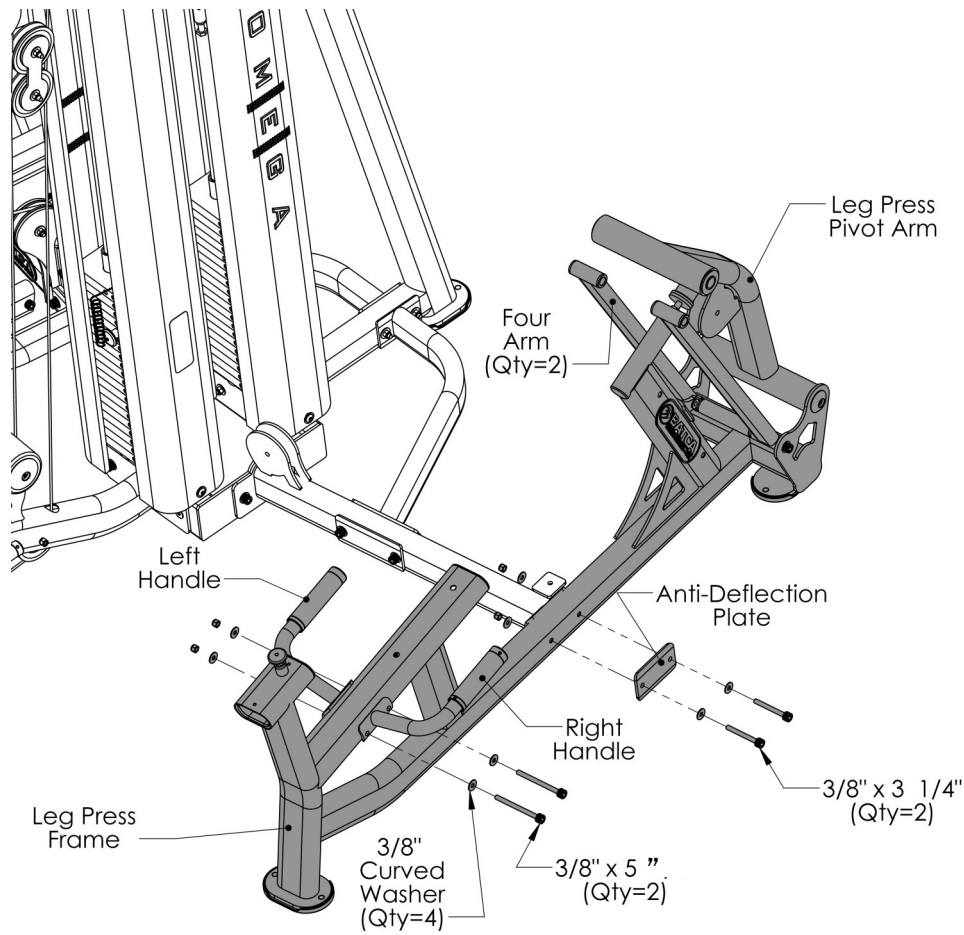
STEP 21: THIS SECTION IS ONLY FOR THOSE WHO PURCHASED THE LEG PRESS OPTION.



ALL FLAT WASHERS AND NYLOCKS ARE 3/8" UNLESS OTHERWISE NOTED.

| ITEM # | PART # | DESCRIPTION | QTY |
|--------|-----------|-----------------------|-----|
| 107 | BFP-10981 | LEG PRESS BASE | 1 |
| 108 | BFP-52164 | ANTI-DEFLECTION PLATE | 1 |
| 125 | BFP-51653 | SHCS 3/8" x 1 1/4" | 2 |
| 132 | BFP-51748 | SHCS 3/8" x 3 1/4" | 2 |
| 136 | BFH-50146 | 3/8" FLAT WASHER | 8 |
| 137 | BFH-50157 | 3/8" NYLOCK | 4 |

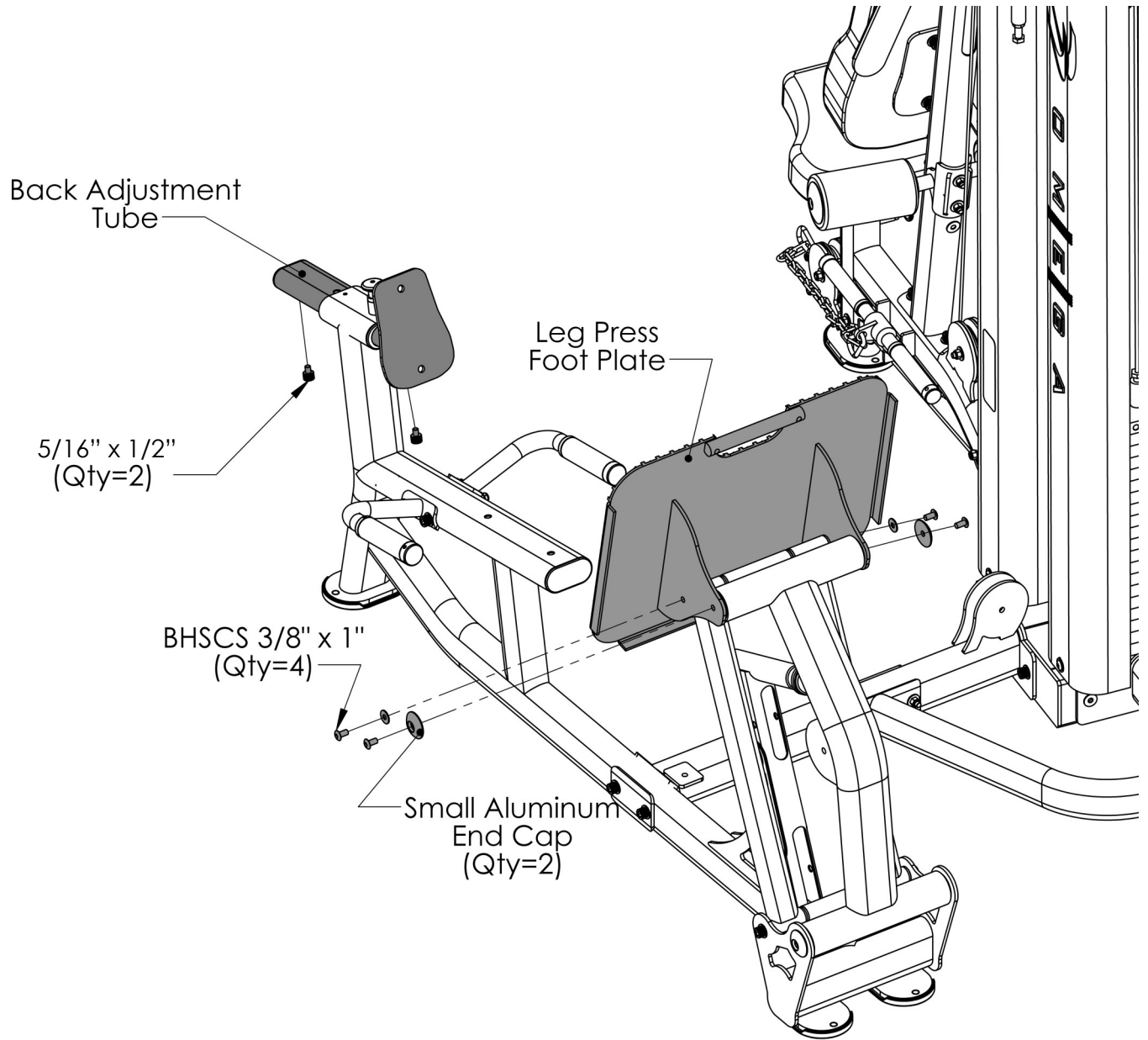
STEP 22:



| ITEM # | PART # | DESCRIPTION | QTY |
|--------|-----------|-----------------------|-----|
| 109 | BFP-10982 | LEG PRESS FRAME | 1 |
| 110 | BFP-10860 | LEFT HANDLE | 1 |
| 111 | BFP-10861 | RIGHT HANDLE | 1 |
| 112 | BFP-52159 | ANTI DEFLECTION PLATE | 1 |
| 113 | BFP-10851 | FOUR ARM | 2 |
| 114 | BFP-10852 | PIVOT ARM | 1 |
| 132 | BFP-51748 | SHCS 3/8" x 3 1/4" | 2 |
| 133 | BFP-51799 | SHCS 3/8" x 5 " | 2 |
| 135 | BFH-50204 | 3/8" CURVED WASHER | 4 |
| 136 | BFH-50146 | 3/8" FLAT WASHER | 4 |
| 137 | BFH-50157 | 3/8" NYLOCK | 4 |

ALL FLAT WASHERS AND NYLOCKS ARE 3/8" UNLESS OTHERWISE NOTED.

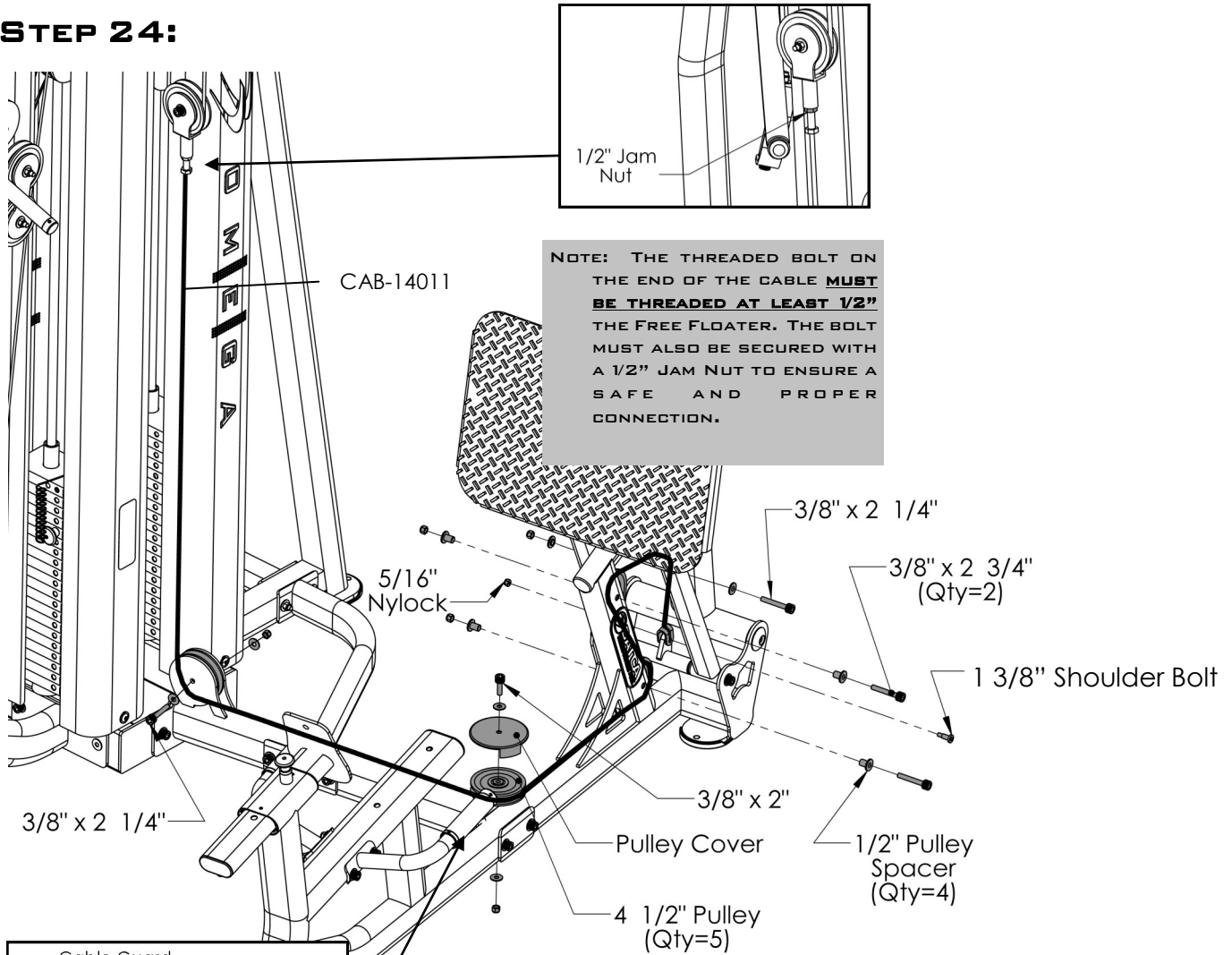
STEP 23:



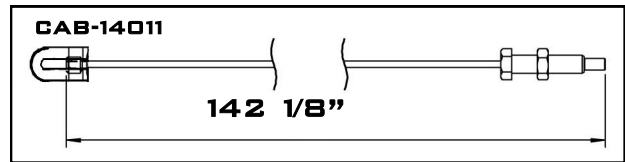
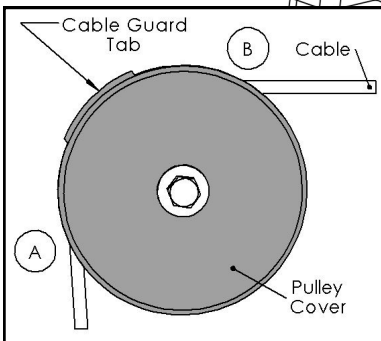
| ITEM # | PART # | DESCRIPTION | QTY |
|--------|-----------|------------------------|-----|
| 115 | BFP-10853 | LEG PRESS FOOT PLATE | 1 |
| 116 | BFP-10856 | BACK CHROME ADJUSTMENT | 1 |
| 121 | BFP-51696 | SMALL ALUMINUM END CAP | 2 |
| 123 | BFP-52430 | SHCS 5/16" x 1/2" | 2 |
| 124 | BFH-50620 | BHSCS 3/8" x 1" | 4 |
| 136 | BFH-50146 | 3/8" FLAT WASHER | 2 |

ALL FLAT WASHERS AND NYLOCKS ARE 3/8" UNLESS OTHERWISE NOTED.

STEP 24:



NOTE: THE THREADED BOLT ON THE END OF THE CABLE **MUST BE THREADED AT LEAST 1/2"** THE FREE FLOATER. THE BOLT MUST ALSO BE SECURED WITH A 1/2" JAM NUT TO ENSURE A SAFE AND PROPER CONNECTION.

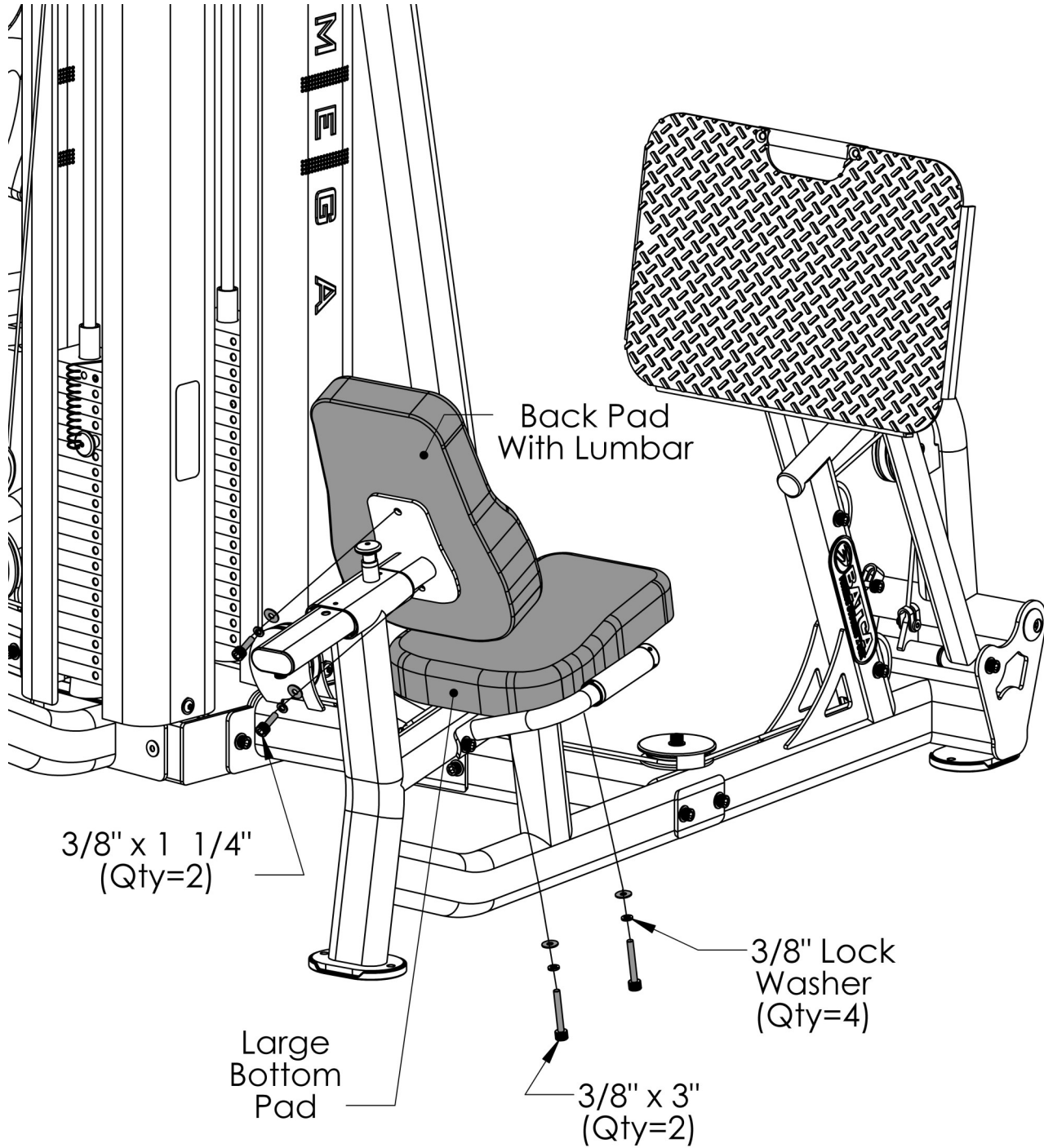


- POSITION** THE CABLE GUARD TAB ON THE PULLEY COVER SO THAT THE TAB PREVENTS THE CABLE FROM COMING OUT OF IT'S TRACK ON THE 4 1/2" PULLEY. AN EXAMPLE OF THIS POSITIONING CAN BE SEEN IN THE FIGURE ABOVE. THE CABLE GUARD TAB SHOULD BE POSITIONED SO THAT IT IS IN THE MIDDLE OF THE CABLE WRAP ON THE 4 1/2" PULLEY, BETWEEN POINTS "A" AND "B". THIS WILL ALLOW BETTER PROTECTION AND PREVENT THE CABLE FROM RUBBING THE CABLE GUARD TAB.

ALL FLAT WASHERS AND NYLOCKS ARE 3/8" UNLESS OTHERWISE NOTED.

| ITEM # | PART # | DESCRIPTION | QTY |
|--------|-----------|-------------------------------|-----|
| 140 | CAB-14011 | FREE FLOATER TO CABLE LOCKOUT | 1 |
| 117 | BFM-50345 | PULLEY COVER | 1 |
| 120 | BFH-50174 | 4 1/2" PULLEY | 5 |
| 122 | BFP-51746 | 1/2" PULLEY SPACER | 4 |
| 126 | BFH-50351 | 1 3/8" SHOULDER BOLT | 1 |
| 127 | BFP-51759 | SHCS 3/8" x 2" | 1 |
| 128 | BFP-51752 | SHCS 3/8" x 2 1/4" | 2 |
| 130 | BFP-51750 | SHCS 3/8" x 2 3/4" | 2 |
| 134 | BFH-50267 | 5/16" NYLOCK | 1 |
| 136 | BFH-50146 | 3/8" FLAT WASHER | 6 |
| 137 | BFH-50157 | 3/8" NYLOCK | 5 |

STEP 25:

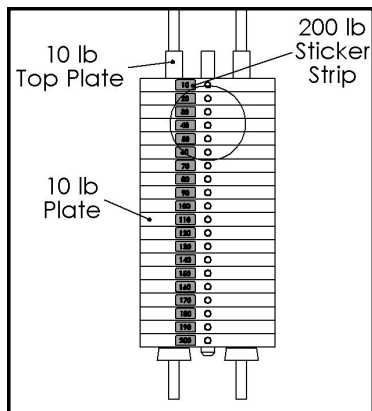


ALL FLAT WASHERS AND NYLOCKS ARE 3/8" UNLESS OTHERWISE NOTED.

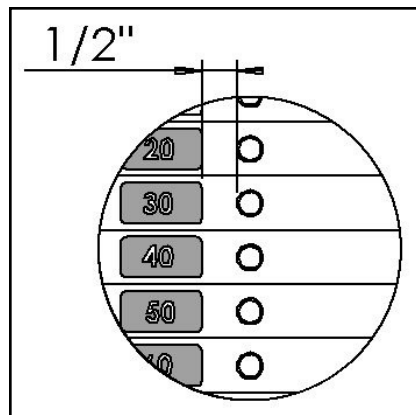
| ITEM # | PART # | DESCRIPTION | QTY |
|--------|-----------|----------------------|-----|
| 118 | BFP-52136 | BACK PAD WITH LUMBAR | 1 |
| 119 | BFP-52130 | LARGE BOTTOM PAD | 1 |
| 125 | BFP-51653 | SHCS 3/8" x 1 1/4" | 2 |
| 131 | BFP-51747 | SHCS 3/8" x 3" | 2 |
| 138 | BFH-50147 | 3/8" LOCK WASHER | 4 |
| 137 | BFH-50146 | 3/8" FLAT WASHER | 4 |

FINAL ASSEMBLY AND TROUBLESHOOTING

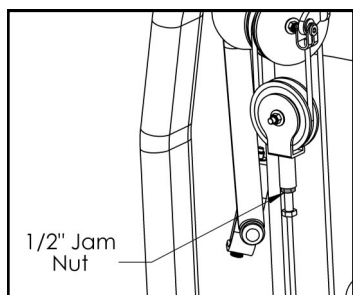
WEIGHT STACK DECALS:



200LB STACK

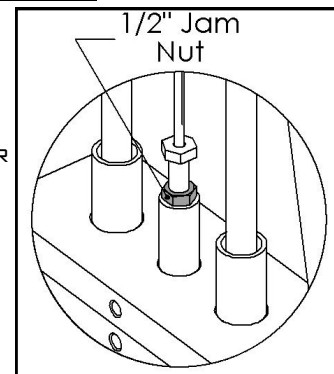


IMPORTANT - CHECK THESE COMPONENTS BEFORE USING GYM:

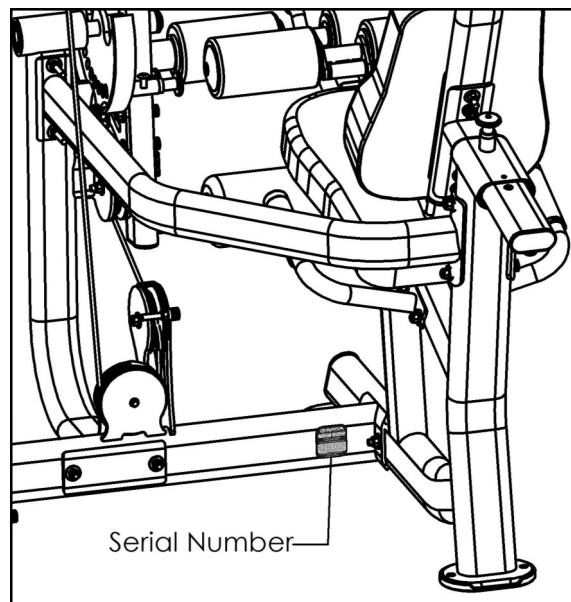


FREE FLOATER

- EACH CABLE WITH A THREADED BOLT ON EITHER END **MUST BE THREADED AT LEAST 1/2"** INTO ITS ATTACHMENT, WHETHER IT BE A FREE FLOATER, LOCKOUT FREE FLOATER, OR THE TOP PLATE OF THE WEIGHT STACK. EACH MUST ALSO BE SECURED WITH A 1/2" JAM NUT TO ENSURE A SAFE AND PROPER CONNECTION.



TOP PLATE



- **RECORD** YOUR SERIAL NUMBER ON THE FRONT OF THIS MANUAL AND KEEP FOR YOUR RECORDS. THE SERIAL NUMBER CAN BE FOUND BACK OF THE LEG EXTENSION/LEG CURL BASE AS SHOWN IN THE FIGURE TO THE LEFT.

GUIDE ROD

- CLEAN GUIDE RODS WITH A LINT-FREE CLOTH AND APPLY A THIN LAYER OF SILICONE LUBRICANT (PART # BFH-50262) TO EACH GUIDE ROD. THIS WILL ENSURE A GLASS SMOOTH PERFORMANCE FROM YOUR WEIGHT STACK.

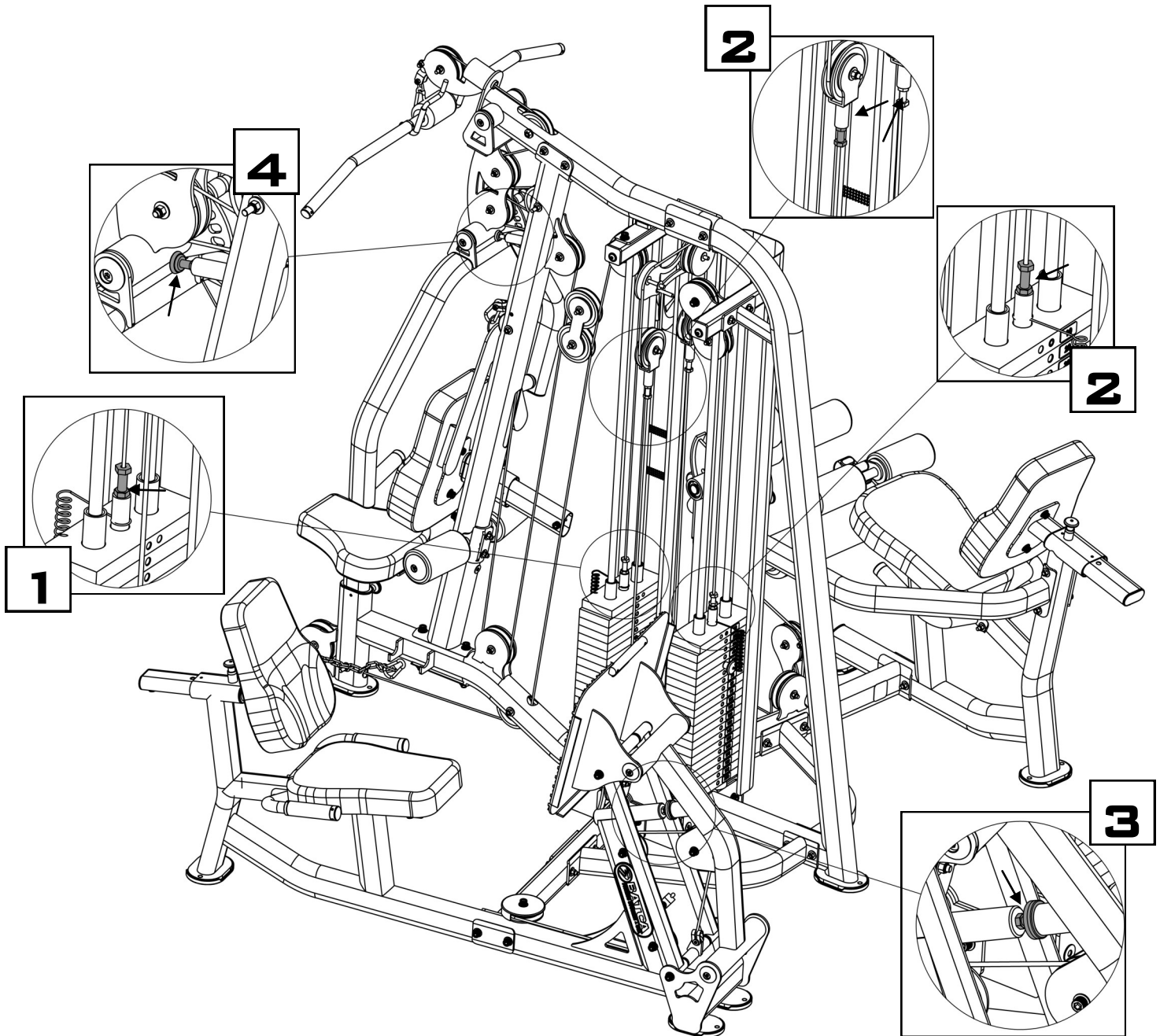
CABLE ADJUSTMENTS

- **ADJUST** CABLES TO PROPER TENSION FROM ANY OF THE LOCATIONS SHOWN BELOW.



NOTE: ALL CABLES WITH THREADED ADJUSTABLE ENDS MUST HAVE AT LEAST 1/2" OF THE THREADS THREADED IN TO ITS COUNTERPART. IT IS VERY IMPORTANT THAT THE 1/2" JAM NUT BE WRENCH TIGHTENED TO THE COUNTERPART TO ENSURE THAT THE THREADED ADJUSTABLE END OF THE CABLE DOES NOT BACK OUT OF ITS COUNTERPART.

- **NOTE:** IF THE TOP PLATE RAISES OFF OF THE SECOND PLATE IN THE WEIGHT STACK, THEN THE CABLE TENSION IS TOO TIGHT. YOU WILL NEED TO TAKE SOME OF THE TENSION OUT TO LOWER THE TOP PLATE FLUSH WITH THE SECOND PLATE.



PREVENTIVE MAINTENANCE

BATCA FITNESS SYSTEMS STRIVES TO GIVE YOU THE VERY BEST IN QUALITY, PERFORMANCE AND SAFETY THROUGH CAREFULLY ENGINEERED DESIGNS AND EXCELLENT WORKMANSHIP. IN ORDER TO MAINTAIN THIS HIGH LEVEL OF QUALITY THE PREVENTATIVE MAINTENANCE SCHEDULE BELOW SHOULD BE FOLLOWED.

CLEAN UPHOLSTERY, GRIPS, AND ROLLER PADS WITH MILD SOAP AND WATER GENERALLY AFTER EVERY USE. THE GUIDE RODS, CHROME SLIDES AND FRAME SHOULD BE CLEANED WITH A COTTON CLOTH. UPON CLEANING THE GUIDE RODS, A THIN LAYER OF SILICONE OR TEFLON GEL SHOULD BE APPLIED TO EACH ROD TO ENSURE A GLASS SMOOTH PERFORMANCE.

AN OVERALL INSPECTION SHOULD BE DONE BEFORE EACH WORKOUT. IF THE WARNING AND SAFETY DECALS ARE WORN OR HAVE BEEN REMOVED THEY SHOULD BE REPLACED IMMEDIATELY. THE CABLES AND CABLE SYSTEMS SHOULD BE INSPECTED FOR SIGNS OF WEAR AND PROPER TENSION. IN ORDER TO CHECK CABLES PROPERLY YOU SHOULD CAREFULLY RUN THE CABLE THROUGH YOUR FINGERTIPS, CHECKING FOR SIGNS OF WEAR, CRACKS, BURS AND THINNING SPOTS. REPLACE ANY PART AT FIRST SIGNS OF WEAR. CABLES SHOULD BE ADJUSTED FOR PROPER TENSION. SEE ASSEMBLY INSTRUCTIONS FOR THIS DETAIL. ALL HARDWARE, STOPS, AND ADJUSTMENTS SHOULD BE CHECKED AND TIGHTENED AS REQUIRED.

THE GUIDE RODS ON YOUR MACHINE SHOULD BE CLEANED AND LUBRICATED REGULARLY. THIS WILL ENSURE A GLASS SMOOTH PERFORMANCE FROM YOUR WEIGHT STACK. A THIN LAYER OF EITHER SILICONE OR TEFLON GEL SHOULD APPLIED TO EACH ROD. EACH PILLOW BLOCK BEARING AND FLANGE BEARING HAS A GREASE FITTINGS THAT MUST BE LUBRICATED REGULARLY. USE GENERAL PURPOSE BEARING GREASE AND FOLLOW THE SCHEDULE BELOW.

ALTHOUGH CABLES SHOULD BE INSPECTED DAILY, IT IS IMPORTANT THAT ALL CABLES BE REPLACED AS DIRECTED IN THE SCHEDULE BELOW. PLEASE NOTE THAT AT ANY FIRST SIGN OF WEAR THE CABLE SHOULD BE REPLACED IMMEDIATELY.

IF THERE ARE ANY QUESTIONS CONCERNING MAINTENANCE, PLEASE CONTACT YOUR LOCAL BATCA DEALER OR CONTACT BATCA FITNESS SYSTEMS DIRECTLY AT:

BATCA FITNESS SYSTEMS
(919) 255-1233
WWW.BATCAFITNESS.COM

| | DAILY | | WEEKLY | | MONTHLY | | QUARTERLY | | YEARS | |
|------------------|------------|------|------------|------|------------|------|------------|------|------------|------|
| | Commercial | Home | Commercial | Home | Commercial | Home | Commercial | Home | Commercial | Home |
| CLEAN | | | | | | | | | | |
| UPHOLSTERY | X | | | X | | | | | | |
| HAND GRIPS | X | | | X | | | | | | |
| ROLLER PADS | X | | | X | | | | | | |
| GUIDE RODS | | | X | | | X | | | | |
| CHROME SLIDES | | | X | | | X | | | | |
| FRAME | | | X | | | X | | | | |
| INSPECT | | | | | | | | | | |
| OVERALL | X | X | | | | | | | | |
| SAFETY DECALS | X | X | | | | | | | | |
| CABLES | X | X | | | | | | | | |
| CABLE TENSION | | | X | | | X | | | | |
| PULLEYS | X | X | | | | | | | | |
| HARDWARE | X | X | | | | | | | | |
| STOPS | X | X | | | | | | | | |
| UPHOLSTERY | X | X | | | | | | | | |
| HAND GRIPS | | | X | | | X | | | | |
| FRAME | | | X | | | X | | | | |
| BUSHINGS | X | | | X | | | | | | |
| BEARINGS | X | | | X | | | | | | |
| LUBRICATE | | | | | | | | | | |
| GUIDE RODS | | | X | | | X | | | | |
| BEARINGS | | | | | | | As Needed | | | 1 |
| REPLACE | | | | | | | | | | |
| CABLES | | | | | | | | | 1 | 3 |

LIMITED LIFETIME WARRANTY

WHAT IS COVERED

FOR RESIDENTIAL USE:

BATCA FITNESS SYSTEMS WARRANTS ALL OF ITS PRODUCTS AGAINST DEFECTS IN MANUFACTURING, MATERIALS AND WORKMANSHIP UNDER NORMAL USE AND SERVICE FOR ONE YEAR FROM DATE OF PURCHASE INCLUDING PAINT, CHROME, UPHOLSTERY AND GRIPS. BATCA FITNESS SYSTEMS ALSO WARRANTS ALL CABLES, BELTS, BOLTS, NUTS, CAPS, PLUGS, BUMPER, WASHERS, LEVELERS, DECALS, GAS SPRINGS AND OTHER HARDWARE FOR THREE YEARS AFTER DATE OF PURCHASE; ALL MOVING PARTS, INCLUDING PULLEYS, BUSHINGS, BEARINGS AND PULL PINS FOR FIVE YEARS AFTER DATE OF PURCHASE AND WARRANTS THE FRAME AND ALL WELDED PARTS FOR THE LIFETIME OF THE ORIGINAL PURCHASER.

FOR COMMERCIAL USE:

BATCA FITNESS SYSTEMS WARRANTS ALL OF ITS PRODUCTS AGAINST DEFECTS IN MANUFACTURING, MATERIALS AND WORKMANSHIP UNDER NORMAL USE AND SERVICE FOR SIX MONTHS FROM DATE OF PURCHASE INCLUDING PAINT, CHROME, UPHOLSTERY AND GRIPS. BATCA FITNESS SYSTEMS ALSO WARRANTS ALL CABLES, BELTS, BOLTS, NUTS, CAPS, PLUGS, BUMPER, WASHERS, LEVELERS, DECALS, GAS SPRINGS AND OTHER HARDWARE FOR ONE YEAR AFTER DATE OF PURCHASE; ALL MOVING PARTS, INCLUDING PULLEYS, BUSHINGS, BEARINGS AND PULL PINS FOR THREE YEARS AFTER DATE OF PURCHASE AND WARRANTS THE FRAME AND ALL WELDED PARTS FOR TEN YEARS AFTER DATE OF PURCHASE.

WHAT IS NOT COVERED

THIS WARRANTY DOES NOT COVER DAMAGE, WHICH RESULTS FROM SHIPPING, MISUSE, ABUSE, NEGLIGENCE, CARELESSNESS, MODIFICATION OR ALTERATION, ACCIDENT, FIRE, FLOOD, "ACTS OF GOD" OR OTHER CONTINGENCIES BEYOND THE CONTROL OF BATCA FITNESS SYSTEMS. THIS WARRANTY ALSO DOES NOT COVER DETERIORATION FROM WEAR AND TEAR OR EXPOSURE OR ANY DEFECT, WHICH WOULD NOT HAVE HAPPENED IF INSTRUCTIONS IN THE OWNER'S MANUAL HAD BEEN FOLLOWED. IMPROPER INSTALLATION, IMPROPER ASSEMBLY OR FOLLOW-UP MAINTENANCE ALONG WITH INSTALLATION OF PARTS OR ACCESSORIES NOT ORIGINALLY INTENDED FOR PRODUCTS OF BATCA FITNESS SYSTEMS ARE ALSO NOT COVERED BY THIS WARRANTY. ONLY GENUINE BATCA PARTS SHOULD BE USED FOR REPLACEMENT, REPAIR, AND MAINTENANCE FOR THIS WARRANTY TO APPLY.

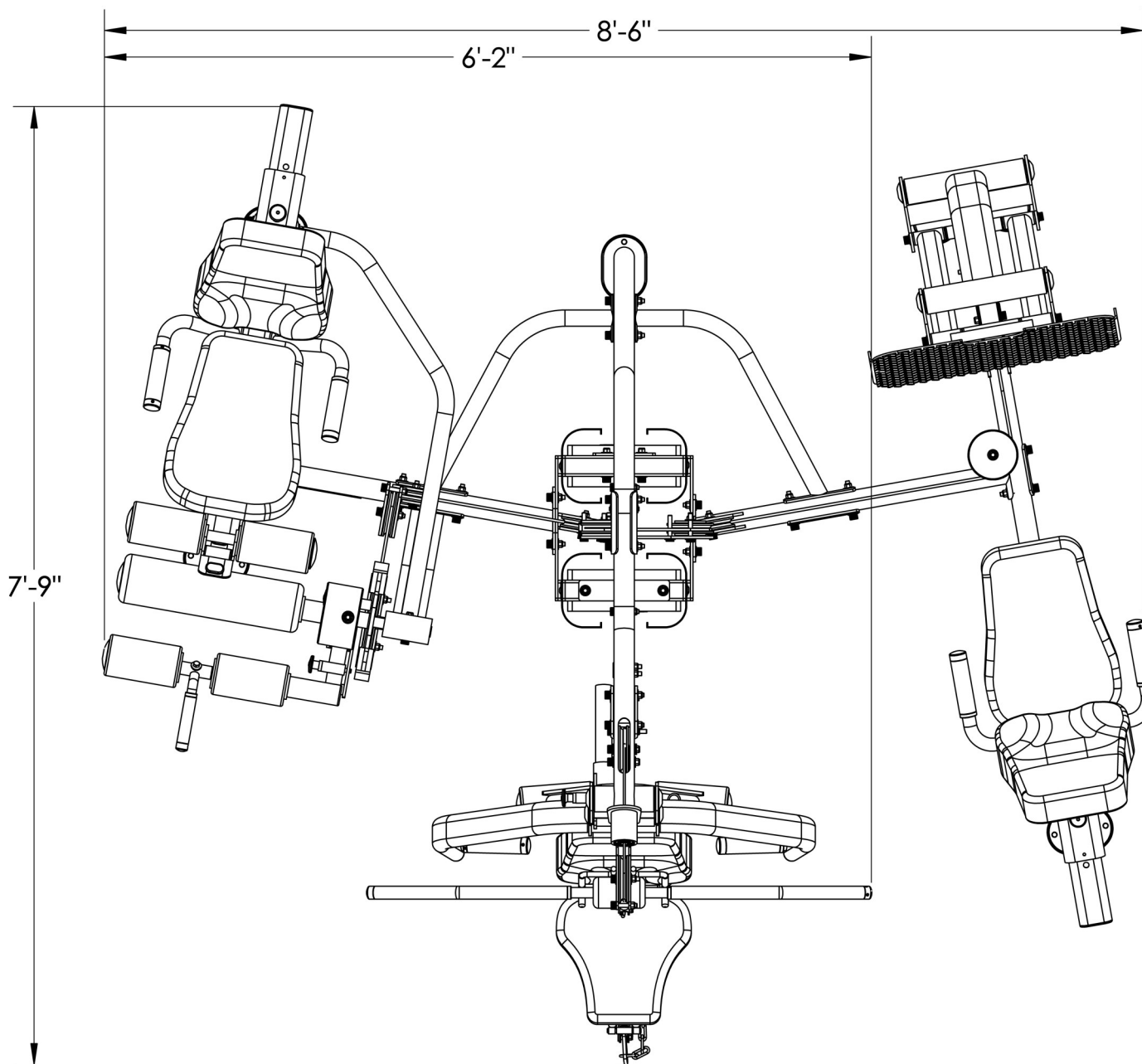
DEFECTIVE PARTS WILL BE REPAIRED OR REPLACED AT BATCA FITNESS SYSTEMS OPTION, WITHOUT PARTS CHARGE TO THE PURCHASER. ALL RETURNS REQUIRE A RETURN AUTHORIZATION PRIOR TO ACCEPTANCE OF REPAIR WORK. BATCA FITNESS SYSTEMS RESERVES THE RIGHT TO MAKE DESIGN CHANGES WITHOUT ANY PRIOR NOTIFICATION AND SHALL NOT BE RESPONSIBLE FOR INCIDENTAL OR CONSEQUENTIAL DAMAGES.

THE PURCHASER IS RESPONSIBLE FOR SHIPPING THE DEFECTIVE PART BACK TO THE FACTORY. REPAIR OR REPLACEMENT IS THE EXCLUSIVE AND SOLE REMEDY OF THE PURCHASER. LABOR CHARGES ASSOCIATED WITH PARTS CHANGES ARE NOT COVERED BY THIS WARRANTY. PROOF OF PURCHASE, SERIAL NUMBER, MODEL NUMBER AND DATE OF PURCHASE WILL BE REQUIRED ALONG WITH ALL PERTINENT INFORMATION OF THE ALLEGED DAMAGE.

THIS WARRANTY APPLIES ONLY TO THE ORIGINAL PURCHASER AND IS NOT TRANSFERABLE. CLAIMS UNDER THIS WARRANTY MUST BE MADE DIRECTLY TO BATCA FITNESS SYSTEMS.

BATCA FITNESS SYSTEMS
1207 N. NEW HOPE ROAD
RALEIGH, NC 27610
(919) 255-1233

WWW.BATCAFITNESS.COM



LAYOUT DIAGRAM

THE OMEGA 2 WITHOUT LEG PRESS HAS A LAYOUT DIMENSION OF 7'-9" (LENGTH) x 6'-2" (WIDTH) x 7'-0" (HEIGHT). THE OMEGA 2 WITH LEG PRESS HAS A LAYOUT DIMENSION OF 7'-9" (LENGTH) x 8'-6" (WIDTH) x 7'-0" (HEIGHT). THERE SHOULD BE MINIMUM OF 18", PREFERABLY 24", OR WORKING SPACE AROUND THE ENTIRE UNIT.