

Revision 4

June 2009



BATCA
fitness systems · usa

C-3

Leg Press/ Calf Raise

Owner's Manual



Record Serial Number Here

Date of Purchase

Batca Fitness Systems
Tel. (919) 255-1233
www.batcafitness.com

Instructions

Congratulations on the purchase of your new Batca C-3. This gym will provide you with a lifetime of enjoyment to meet your strength training needs. Batca Fitness Systems strives to build the best quality gyms and to package these gyms in such a way to avoid any damage during shipping.

In order to get started with your assembly you should first familiarize yourself with this manual. It is recommended that you read through each step thoroughly before you begin. Begin by opening your boxes and separating all of your parts. Verify that all parts are accounted for and have no damage. When all parts are accounted for, you may begin your assembly. Some items may have been pre-assembled for your convenience. Please note that hardware quantities shown reflect total quantities for your gym and may not reflect actual quantities in each bag. Assemble your gym on a solid level surface. This will ensure the best possible performance, function, and safety for the gym and your workout.

Assemble your gym according to the step by step instructions found in this manual. Failure to do so will void your warranty and may result in personal injury. After assembly, you should check each station to ensure correct operation. If a problem arises, recheck your assembly with these instructions to verify correct assembly. If you are unable to correct a problem or have questions with your assembly please contact your authorized Batca dealer.

Warning

Batca Fitness Systems has built this gym to give you a safe, effective and enjoyable workout. However, there is a risk assumed by individuals who use this type of equipment. It is very important that all warnings and instructions are read and followed before beginning any exercise program.

It is also very important to read and follow the preventative maintenance schedule described in this manual. If any of the warning labels or stickers are worn, faded, torn, scratched or missing they should be replaced immediately.

WARNING: There is a risk assumed by individuals who use this type of equipment. To minimize risk always follow these rules.

- 1) It is essential that you consult with your physician before beginning any exercise program.
- 2) Inspect equipment before each use for loose, worn, or frayed parts (including cables, nuts and bolts). Replace parts at first signs of wear (use only genuine BATCA replacement parts). Use of equipment that is damaged, worn, frayed or not completely assembled on a solid, level surface may result in injury.
- 3) Make sure all adjustment pins are fully engaged before using equipment.
- 4) Keep all parts of the body and clothing outside the path of any moving parts of the gym. Be alert to the possibility of injury. Do not be careless.
- 5) Minors and children should not be allowed to play on or around this gym.
- 6) If you have any questions on proper use or maintenance of this gym, do not hesitate to call your local BATCA FITNESS SYSTEMS distributor or BATCA FITNESS SYSTEMS at (919) 255-1233. www.batcafitness.com

Table of Contents

	<u>Page</u>		<u>Page</u>
Instructions	2	Final Assembly and Troubleshooting	17-18
Parts Listing	3	Cable Tension and Adjustments	19
Hardware Comparison	4-7	Maintenance	20
Main Assembly	8-16	Warranty	21
Cable Routing	13-15	Floor Plan Layout	22
Upholstery	16		

Frame Components

ITEM NO.	PART NUMBER	DESCRIPTION	QTY.
10	BFM-50527	Guide Rod	2
22	BFM-50126	Anti-Deflection Plate	1
23	BFM-10502	Leg Press Frame	1
24	BFL-50166	Left Support Plate	1
25	BFL-50165	Right Support Plate	1
26	BFM-50868	Spacer Plate	2
28	BFM-10133	Free Floater	1
29	BFM-10503	Elbow Support	1
30	BFM-10504	Cable Lockout	1
35	BFM-50661	Anti-Deflection Plate	1
49	BFM-50885	1" O.D. X 3/4" Pulley Spacer	4
50	BFM-50148	Threaded Stop	2
60	BFM-50615	Guide Rod Top Plate	1
61	BFM-50252	Four Bar	2
63	BFM-10544	Leg Press Pivot	1

Cables

ITEM NO.	PART NUMBER	DESCRIPTION	QTY.
46	CAB-13012	Leg Press to Floater Cable	1
47	CAB-12012	Stack to Lockout Cable	1

Tools Required

- 9/16" Wrench
- 3/4" Wrench
- 9/16" Ratchet
- Allen Wrench Set
- Tape Measure

Accessories

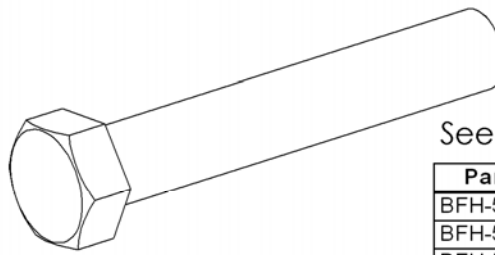
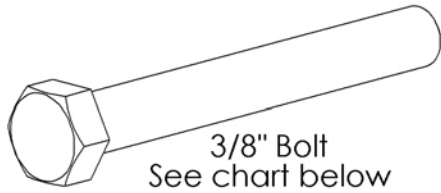
ITEM NO.	PART NUMBER	DESCRIPTION	QTY.
45	BFM-51173	Magnetic Weight Stack Pin	1

Upholstery

ITEM NO.	PART NUMBER	DESCRIPTION	QTY.
18	BFU-10120	Back Pad With Lumbar	1
19	BFU-10117	Large Bottom Pad	1

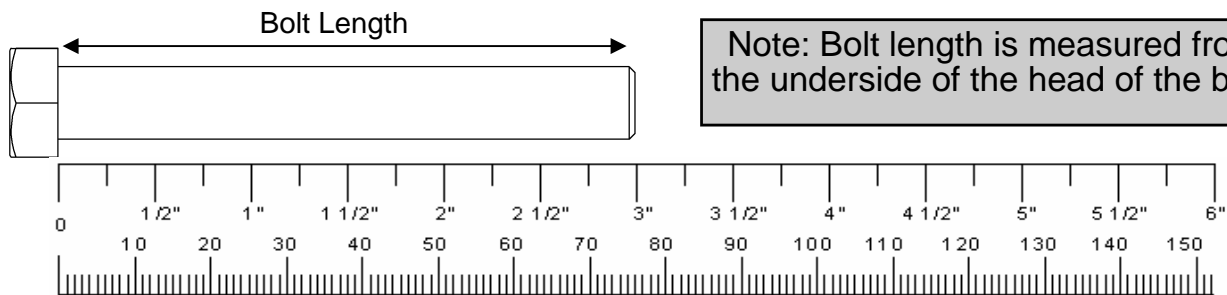
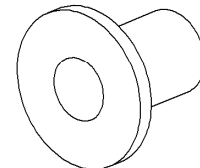
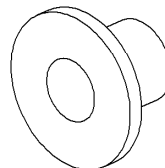
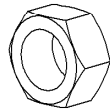
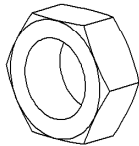
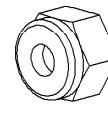
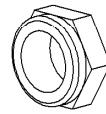
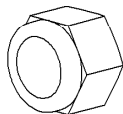
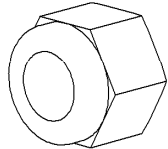
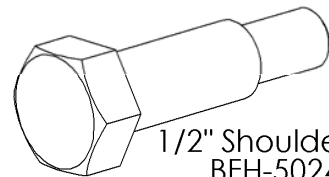
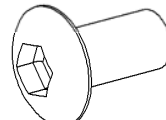
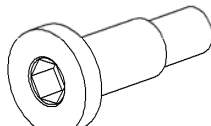
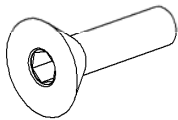
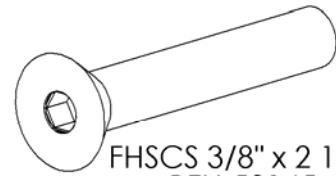
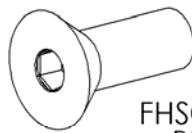
Hardware

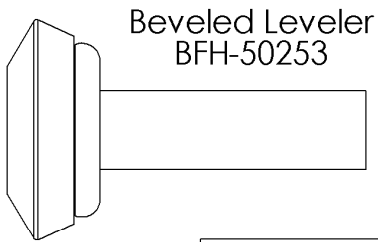
ITEM NO.	PART NUMBER	DESCRIPTION	QTY.
13	BFH-50255	Rubber Foot	5
15	BFH-50174	4 1/2" Pulley	6
16	BFH-50173	3 1/2" Pulley	2
27	BFH-50171	Side Mounted Flange Bearing	2
31	BFH-50251	1/2" Flat Washer Black	12
32	BFH-50139	HCS 1/2-13 X 4 1/4 P5	4
33	BFH-50155	1/2"-13 Nylock (Black)	4
34	BFH-50201	1/2" Pulley Spacer	8
36	BFH-50146	3/8" Flat Washer (Black)	56
37	BFH-50157	3/8"-16 Nylock (Black)	33
38	BFH-50125	HCS 3/8"-16 X 3" P5	4
39	BFH-50126	HCS 3/8"-16 X 3 1/4" P5	8
40	BFH-50127	HCS 3/8"-16 X 3 1/2" P5	2
41	BFH-50124	HCS 3/8"-16 X 2 3/4" P5	4
42	BFH-50130	HCS 3/8"-16 X 4 1/4" P5	2
43	BFH-50147	3/8" Lock Washer (Black)	10
44	BFH-50254	HCS 3/8-16 X 3/4 P5	4
48	BFH-50530	5" Pulley	1
51	BFH-50129	HCS 3/8"-16 X 4" P5	2
52	BFH-50122	HCS 3/8"-16 X 2 1/4" P5	4
54	BFH-50250	1 1/4" Shoulder Bolt	2
55	BFH-50532	FHSCS 3/8"-16 X 1 1/2"	4
56	BFH-51188	1/2" X 1" Strip Bolt	2
57	BFH-50118	HCS 3/8"-16 X 1" P5	2
58	BFH-50128	HCS 3/8"-16 X 3 3/4" P5	2
59	BFH-50119	HCS 3/8"-16 X 1 1/4" P5	2
62	BFH-50232	1/2" X 1 1/4" Strip Bolt	4
64	BFH-50267	5/16"-18 Nylock (Black)	2
65	BFM-51279	1 1/4" Grip Sleeve	2
66	BFH-50633	1 1/4" Grip Cap	2
67	BFH-50632	1 1/4" Grip Collar	2
	BFH-50262	Silicone Gel Pack	2



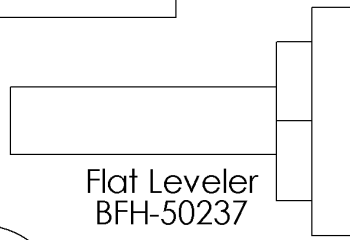
Part #	Size
BFH-50254	3/8" x 3/4"
BFH-50118	3/8" x 1"
BFH-50119	3/8" x 1 1/4"
BFH-50120	3/8" x 1 1/2"
BFH-50285	3/8" x 1 3/4"
BFH-50121	3/8" x 2"
BFH-50122	3/8" x 2 1/4"
BFH-50123	3/8" x 2 1/2"
BFH-50124	3/8" x 2 3/4"
BFH-50125	3/8" x 3"
BFH-50126	3/8" x 3 1/4"
BFH-50127	3/8" x 3 1/2"
BFH-50128	3/8" x 3 3/4"
BFH-50129	3/8" x 4"
BFH-50130	3/8" x 4 1/4"
BFH-50131	3/8" x 4 1/2"
BFH-50274	3/8" x 4 3/4"
BFH-50279	3/8" x 5"
BFH-50270	3/8" x 5 1/4"
BFH-50132	3/8" x 5 1/2"
BFH-50133	3/8" x 6 1/2"
BFH-50298	3/8" x 8 3/4"
BFH-50134	3/8" x 9"

Part #	Size
BFH-50135	1/2" x 2 3/4"
BFH-50136	1/2" x 3"
BFH-50137	1/2" x 3 1/4"
BFH-50138	1/2" x 3 1/2"
BFH-50139	1/2" x 4 1/4"
BFH-50140	1/2" x 4 1/2"
BFH-50141	1/2" x 5 1/2"

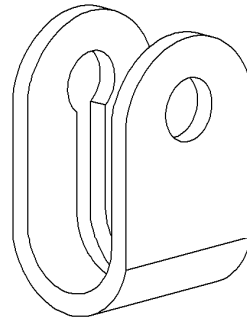




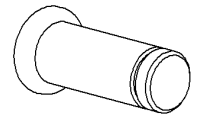
Beveled Leveler
BFH-50253



Flat Leveler
BFH-50237



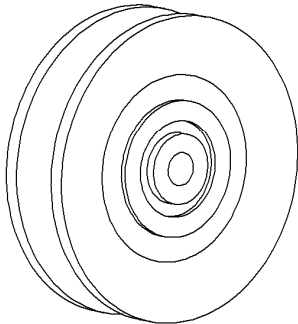
Cable Strap
BFH-50227



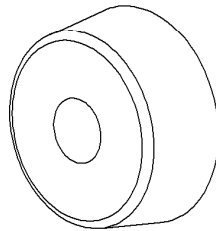
Pin
BFH-50238



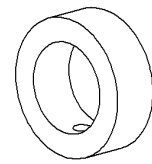
Snap Ring
BFH-50239



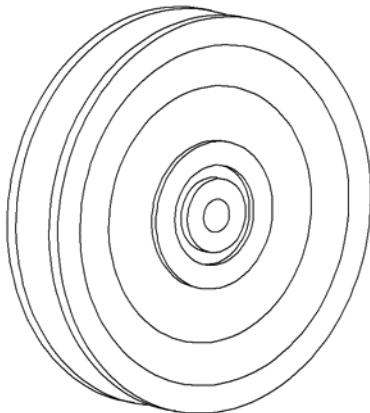
3 1/2" Pulley
BFH-50173



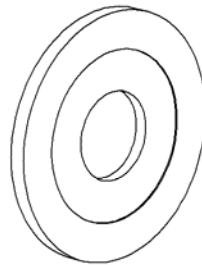
Rubber Donut
BFM-50529



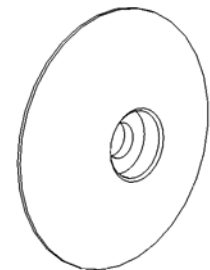
Threaded Collar
BFH-50220



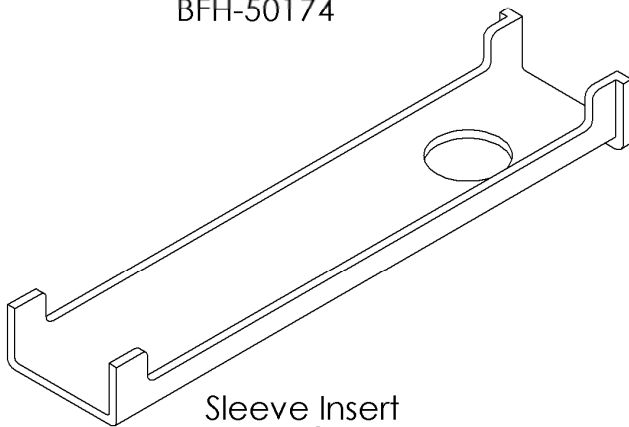
4 1/2" Pulley
BFH-50174



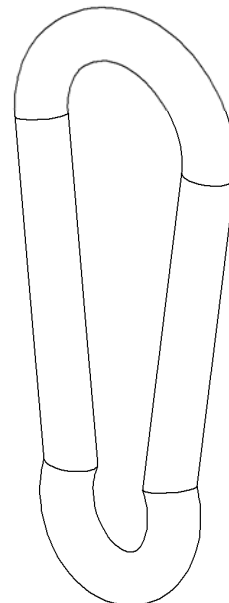
3" Plastic Washer
BFH-50221



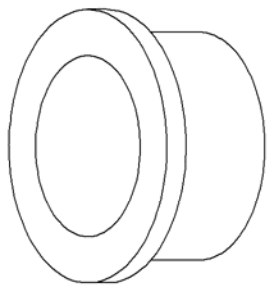
Roller End Cap
BFH-50622



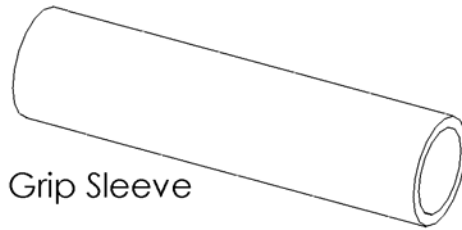
Sleeve Insert
BFH-50175



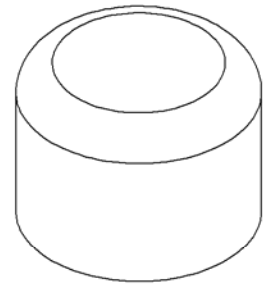
Snap Hook
BFH-50188



1" Bronze Bushing
BFH-50101



Grip Sleeve



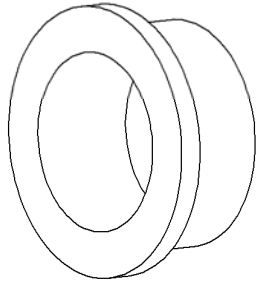
1" Outer Plastic Cap
BFH-50111



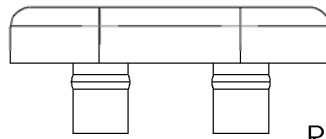
Grip Cap



Grip Collar

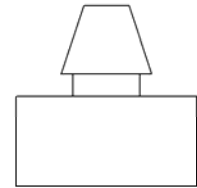


1" Bronze Bushing x 1/2 L
BFH-50297

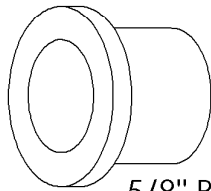


BFH-50222

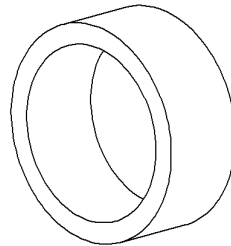
Rubber Bumpers



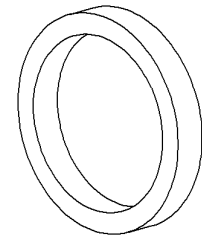
BFH-50200



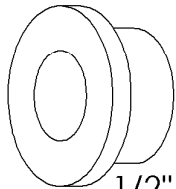
5/8" Bronze Bushing
BFH-50102



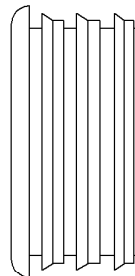
5/8" Spacer
BFM-50247



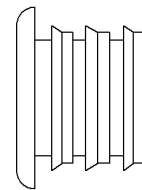
3/16" Spacer
BFM-50246



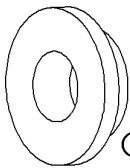
1/2" Bronze Bushing
BFH-50103



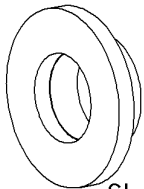
1 1/2" Inner Plastic Cap
BFH-50114



1" Inner Plastic Cap
BFH-50280



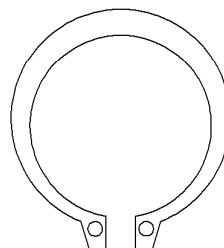
Cable Pivot Bushing
BFH-50248



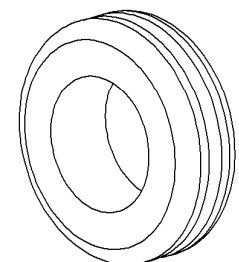
Short 1/2" Bushing
BFH-50244



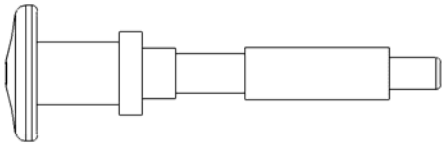
1/2" Snap Ring
BFH-50166



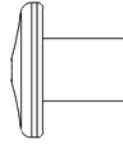
1" Snap Ring
BFH-50165



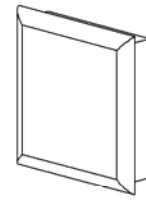
Rubber Grommet
BFH-50199



3/8" Long Pull Pin
BFM-51176

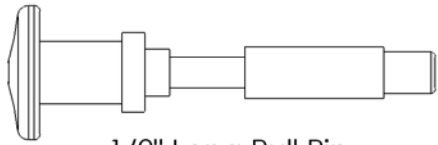


Pull Pin Handle
BFM-51181

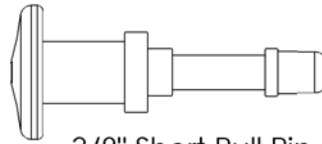


Plastic Cap

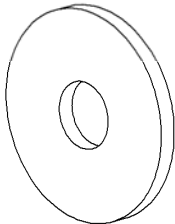
Part #	Size
BFH-50211	2" x 2"
BFH-50212	2" x 3"
BFH-50213	1 1/2" x 2"
BFH-50214	1 3/4" x 1 3/4"
BFH-50215	1 1/2" x 1 1/2"



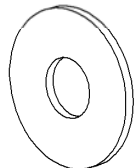
1/2" Long Pull Pin
BFM-51172



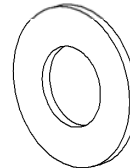
3/8" Short Pull Pin
BFM-51175



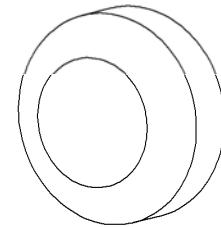
3/8" Fender Washer
BFH-50242



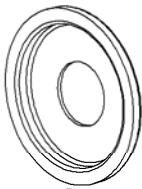
3/8" Flat Washer
BFH-50146



1/2" Flat Washer
BFH-50251



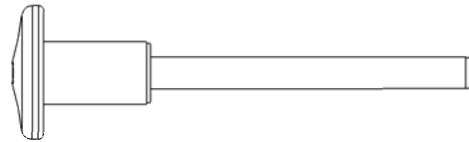
Screw Cap Cover
BFH-50112



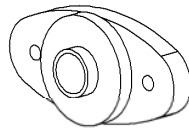
Screw Cap Washer
BFH-50113



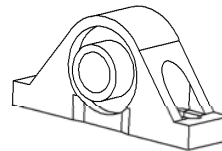
3/8" Lock Washer
BFH-50147



Magnetic Weight Stack Pin
BFM-51173



Side Mounted
Flange Bearing
BFH-50171



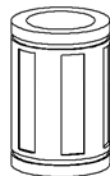
Pillow Block Bearing
BFH-50172



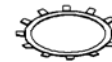
Bar Catch Rubber
Sleeve
BFH-50240

Items not shown.

Part #	Description
BFH-50259	Midnight Black Paint
BFH-50278	Silver Metallic Paint
BFH-50198	Large Logo
BFH-50197	Small Logo
BFH-50236	Foam Grip
BFH-50246	Anti Skid Material
BFH-50262	Silicon Gel Pack
BFC-10101	1 inch chain
BFC-10102	12 inch chain



Linear Bearing
BFH-50627



Bearing Retaining
Clip
BFH-50628



PLEASE FOLLOW ALL DIRECTIONS VERY CAREFULLY FOR PROPER INSTALLATION.

Step 1:



Note: For a more consistent appearance, position all bolts in the direction shown in each figure.

- All Flat Washers and Nylocks are 3/8" unless otherwise noted.

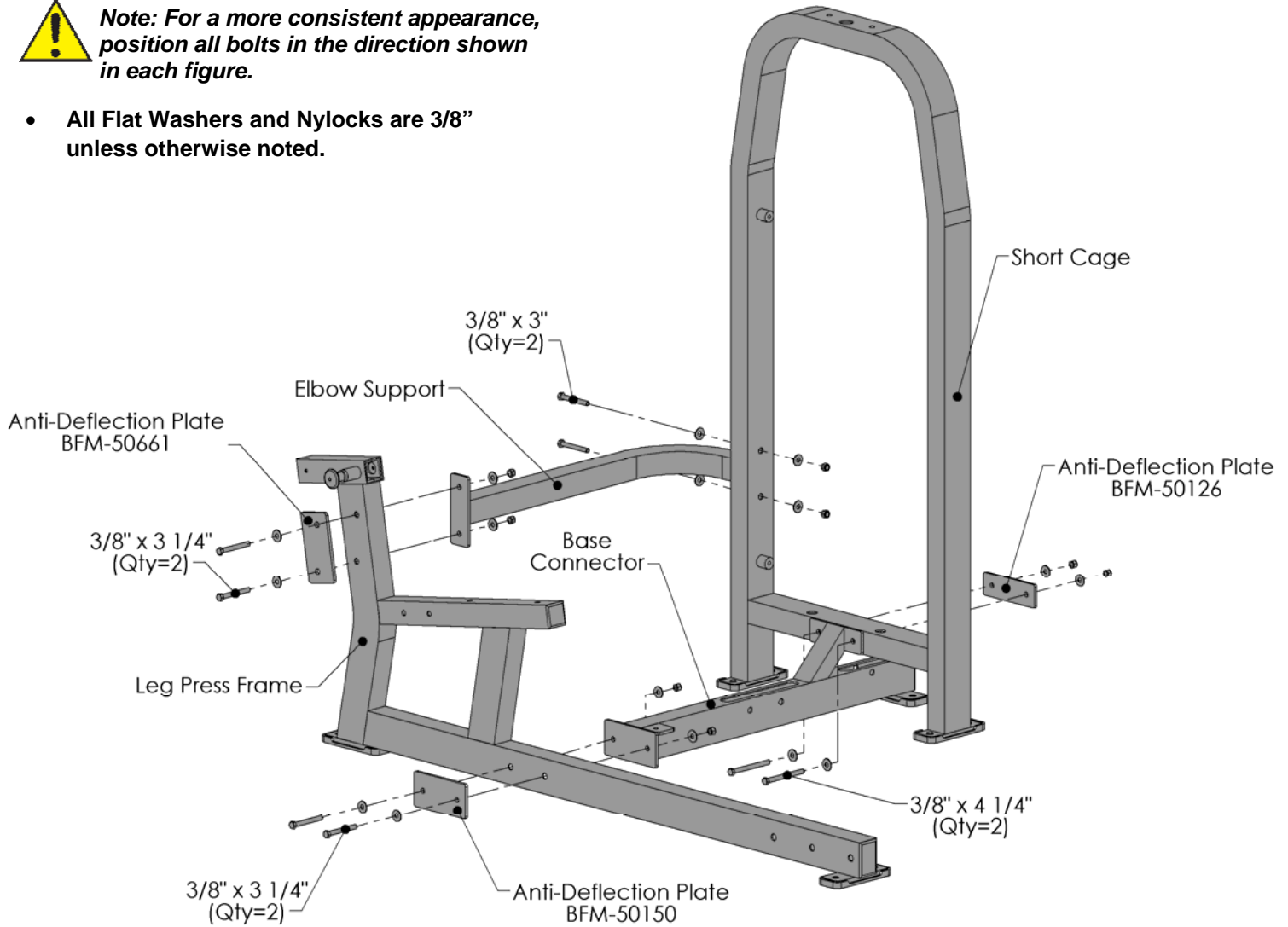


Figure 1

Item #	Part #	Description	Qty
1	BFM-10505	Short Cage	1
13	BFH-50255	Rubber Foot	5
14	BFM-50150	Anti-Deflection Plate	1
21	BFM-10446	Base Connector	1
22	BFM-50126	Anti-Deflection Plate	1
23	BFM-10502	Leg Press Frame	1
36	BFH-50146	3/8" Flat Washer (Black)	16
37	BFH-50157	3/8"-16 Nylock (Black)	8
39	BFH-50126	HCS 3/8"-16 X 3 1/4" P5	4
42	BFH-50130	HCS 3/8"-16 X 4 1/4" P5	2
29	BFM-10503	Elbow Support	1
35	BFM-50661	Anti-Deflection Plate	1
38	BFH-50125	HCS 3/8"-16 x 3" P5	2

Step 2:

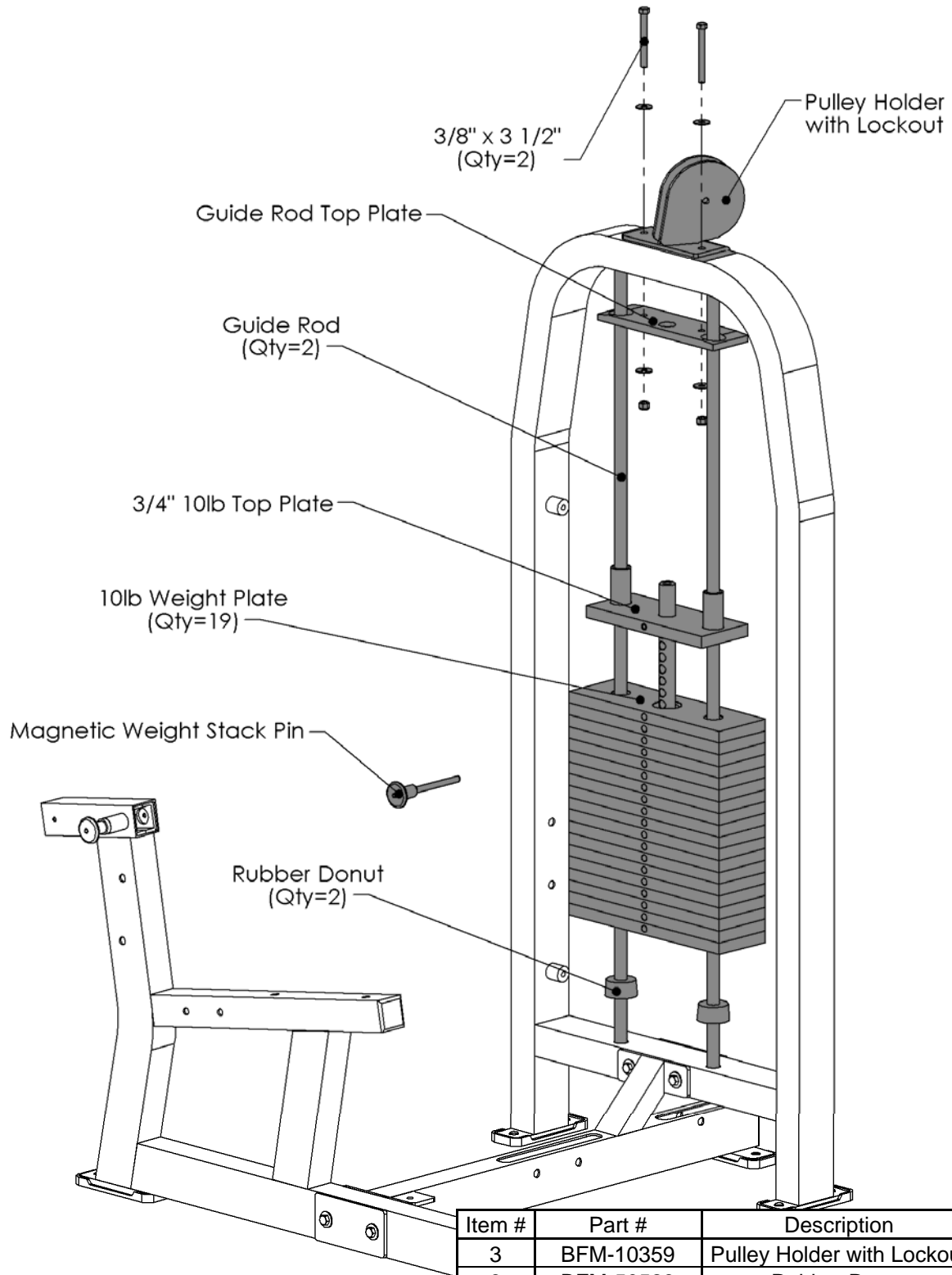


Figure 2

Item #	Part #	Description	Qty
3	BFM-10359	Pulley Holder with Lockout	1
9	BFM-50529	Rubber Donut	2
10	BFM-50527	Guide Rod	2
11	BFM-50632	10lb Weight Plate	19
12	BFM-10413	3/4" 10lb Top Plate	1
36	BFH-50146	3/8" Flat Washer (Black)	4
37	BFH-50157	3/8"-16 Nylock (Black)	2
40	BFH-50127	HCS 3/8"-16 X 3 1/2" P5	2
45	BFM-51173	Magnetic Weight Stack Pin	1
60	BFM-50615	Guide Rod Top Plate	1

All Flat Washers and Nylocks are 3/8" unless otherwise noted.

Step 3:

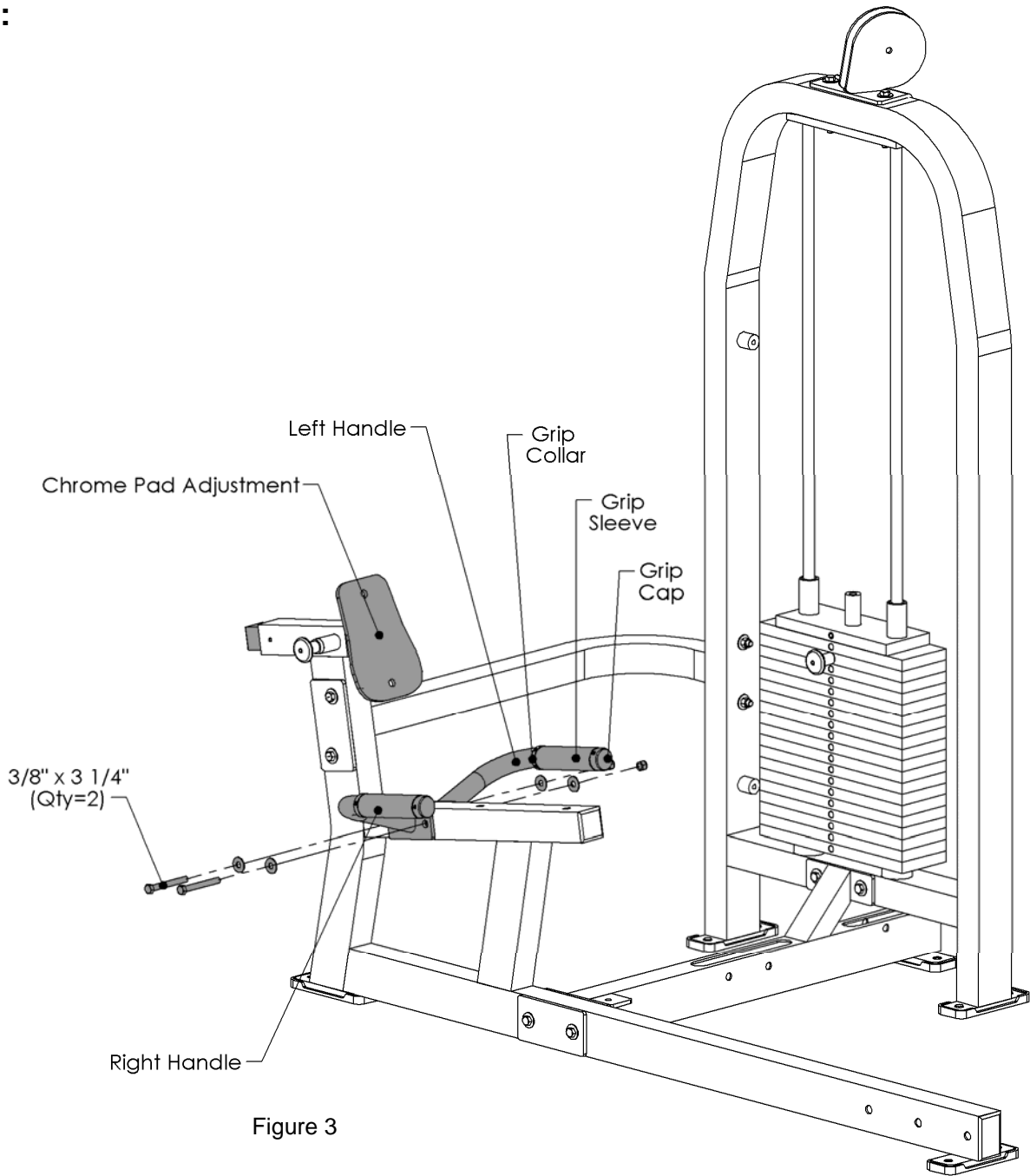


Figure 3

Item #	Part #	Description	Qty
6	BFM-10767	User Left Handle	1
7	BFM-10768	User Right Handle	1
17	BFM-10109	Chrome Pad Adjustment	1
36	BFH-50146	3/8" Flat Washer (Black)	4
37	BFH-50157	3/8"-16 Nylock (Black)	2
39	BFH-50126	HCS 3/8"-16 X 3 1/4" P5	2
65	BFM-51279	1 1/4" Grip Sleeve	2
66	BFH-50633	1 1/4" Grip Cap	2
67	BFH-50632	1 1/4" Grip Collar	2

All Flat Washers and Nylocks are 3/8" unless otherwise noted.

Step 4:

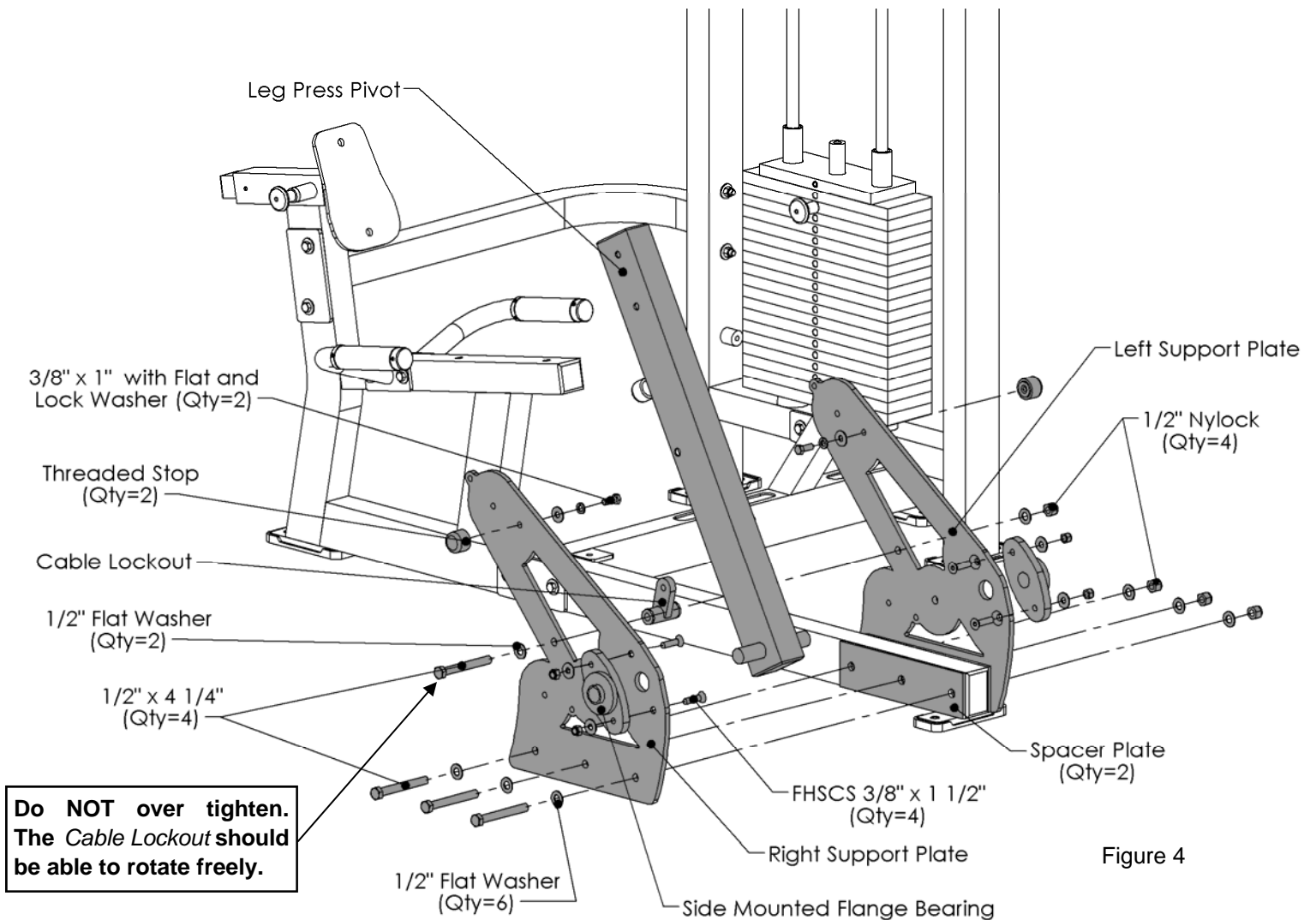


Figure 4

Make sure to tighten the set screws on the Side Mounted Flange Bearings after the Leg Press Pivot has been centered between the Support Plates.

Item #	Part #	Description	Qty
24	BFL-50166	Left Support Plate	1
25	BFL-50165	Right Support Plate	1
27	BFH-50171	Side Mounted Flange Bearing	2
30	BFM-10504	Cable Lockout	1
31	BFH-50251	1/2" Flat Washer Black	8
32	BFH-50139	HCS 1/2-13 X 4 1/4 P5	4
33	BFH-50155	1/2"-13 Nylock (Black)	4
36	BFH-50146	3/8" Flat Washer (Black)	6
37	BFH-50157	3/8"-16 Nylock (Black)	4
43	BFH-50147	3/8" Lock Washer (Black)	2
50	BFM-50148	Threaded Stop	2
55	BFH-50532	FHSCS 3/8"-16 X 1 1/2"	4
57	BFH-50118	HCS 3/8"-16 X 1" P5	2
63	BFM-10544	Leg Press Pivot	1
26	BFM-50868	Spacer Plate	2

All Flat Washers and Nylocks are 3/8" unless otherwise noted.

Step 5:

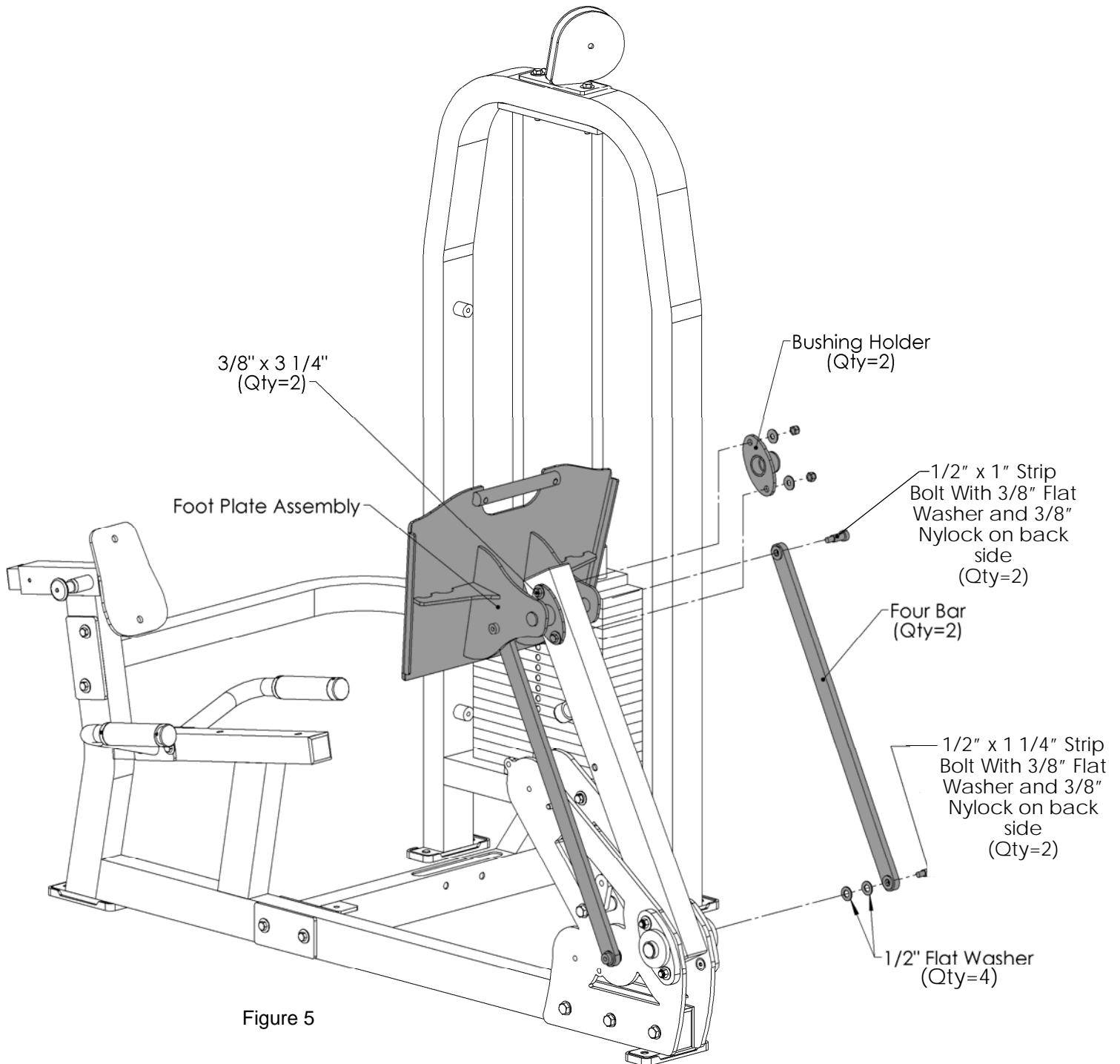


Figure 5

Do NOT over tighten any of the bolts in this step. Over tightening may cause the parts to bind, causing damage and impeding your exercise.

Item #	Part #	Description	Qty
4	BFM-10102	Foot Plate Assembly	1
8	BFM-10152	Bushing Holder	2
31	BFH-50251	1/2" Flat Washer Black	6
36	BFH-50146	3/8" Flat Washer (Black)	8
37	BFH-50157	3/8"-16 Nylock (Black)	6
39	BFH-50126	HCS 3/8"-16 X 3 1/4" P5	2
56	BFH-51188	1/2" X 1" Strip Bolt	2
61	BFM-50252	Four Bar	2
62	BFH-50232	1/2" X 1-1/4" Strip Bolt	2

All Flat Washers and Nylocks are 3/8" unless otherwise noted.

Step 6:

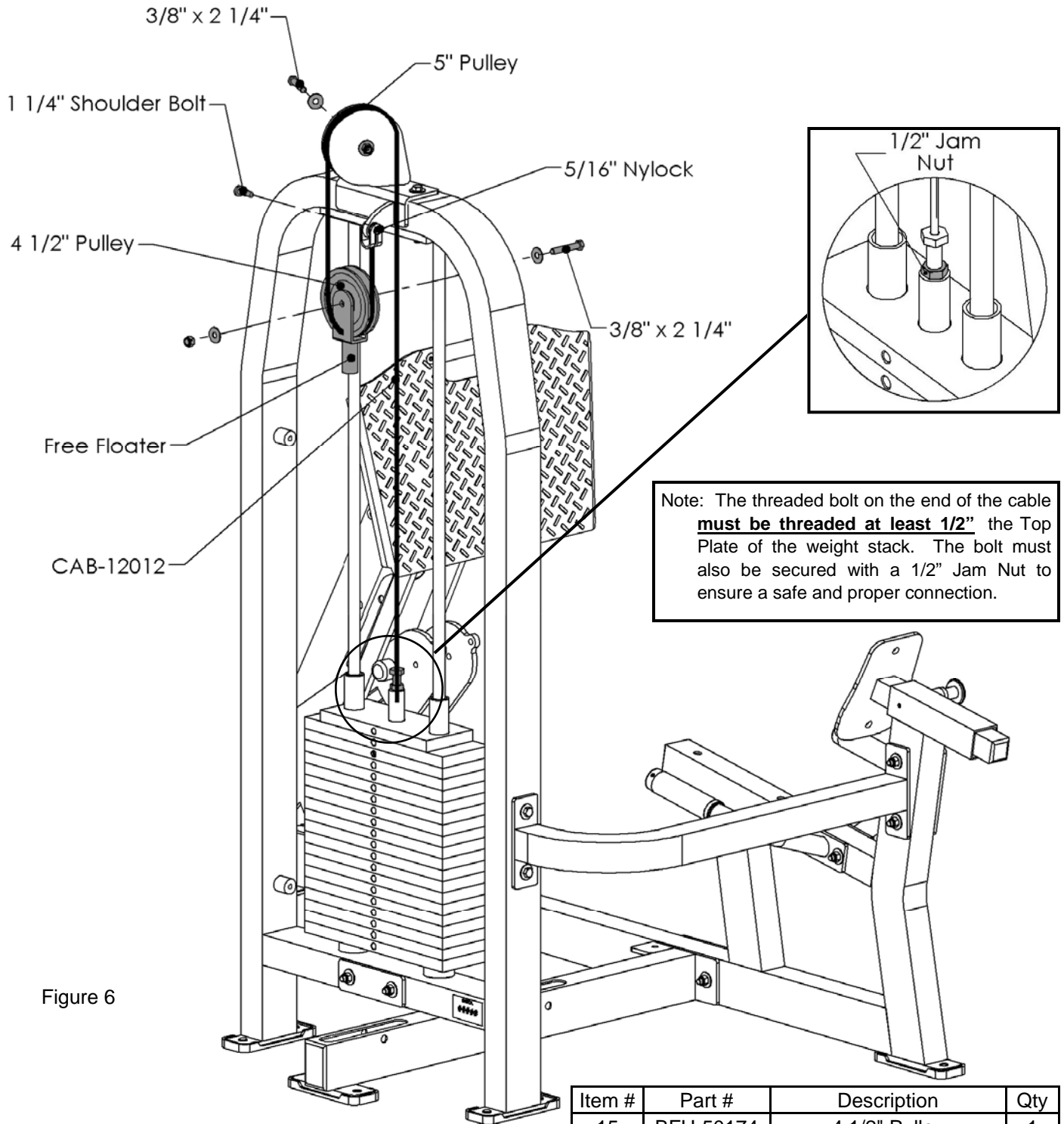
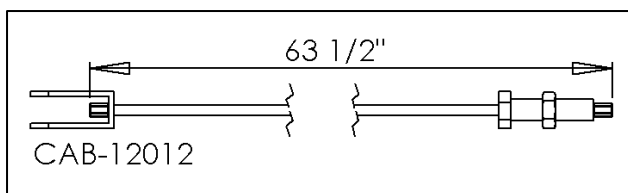


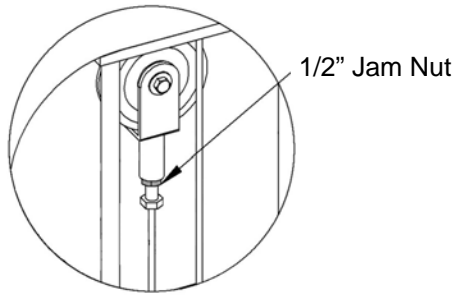
Figure 6



Item #	Part #	Description	Qty
15	BFH-50174	4 1/2" Pulley	1
28	BFM-10133	Free Floater	1
36	BFH-50146	3/8" Flat Washer (Black)	4
37	BFH-50157	3/8"-16 Nylock (Black)	2
47	CAB-12012	Stack to Lockout Cable	1
48	BFH-50530	5" Pulley	1
52	BFH-50122	HCS 3/8"-16 X 2 1/4" P5	2
54	BFH-50250	1 1/4" Shoulder Bolt	1
64	BFH-50267	5/16"-18 Nylock (Black)	1

All Flat Washers and Nylocks are 3/8" unless otherwise noted.

Step 7:



Note: The threaded bolt on the end of the cable **must be threaded at least 1/2"** the Top Plate of the weight stack. The bolt must also be secured with a 1/2" Jam Nut to ensure a safe and proper connection.

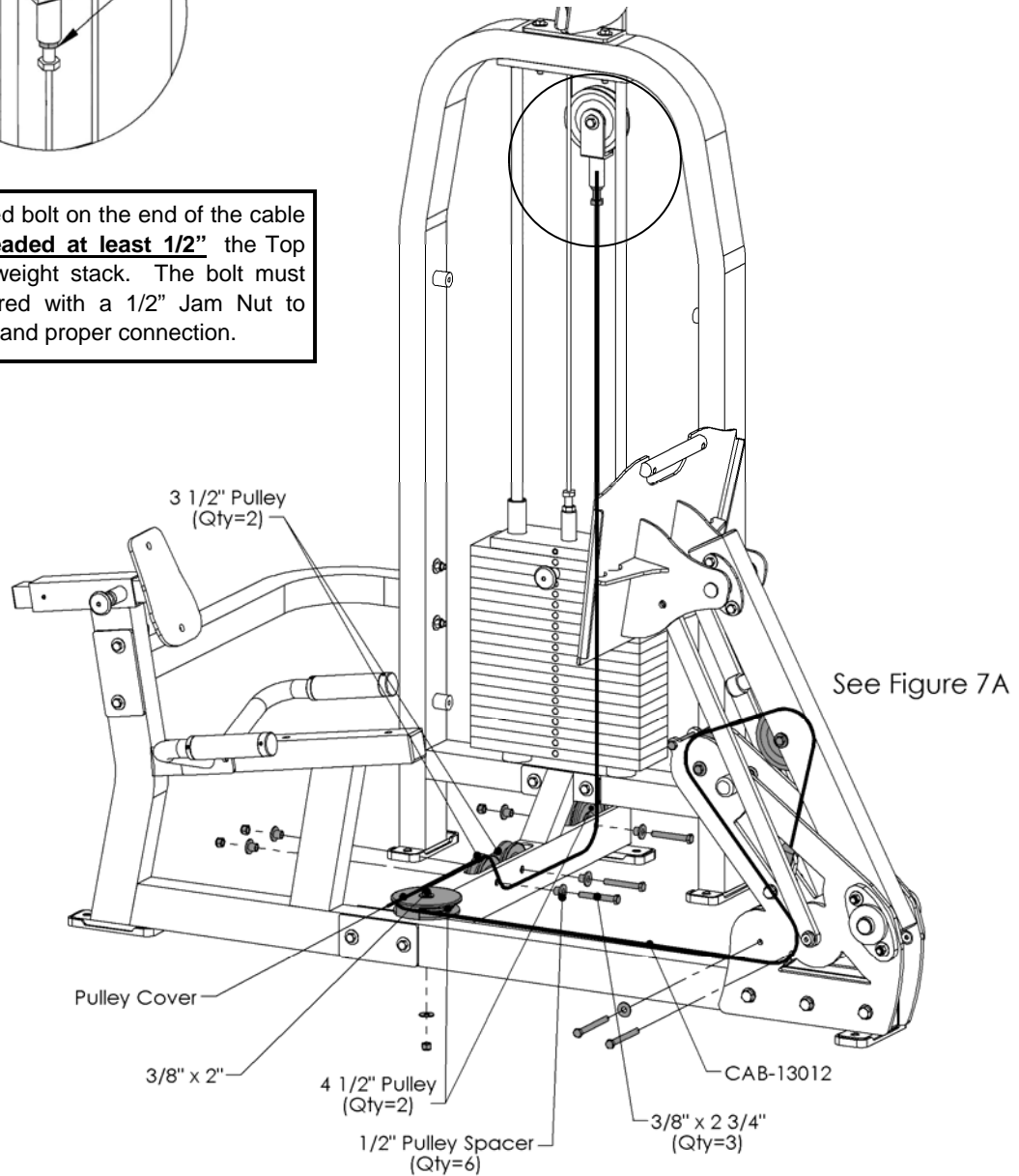
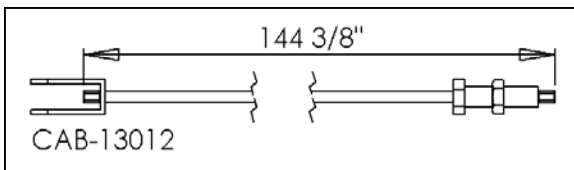


Figure 7



Item #	Part #	Description	Qty
15	BFH-50174	4 1/2" Pulley	5
16	BFH-50173	3 1/2" Pulley	2
20	BFM-50345	Pulley Cover	1
34	BFH-50201	1/2" Pulley Spacer	8
36	BFH-50146	3/8" Flat Washer (Black)	6
37	BFH-50157	3/8"-16 Nylock (Black)	9
41	BFH-50124	HCS 3/8"-16 X 2 3/4" P5	4

Item #	Part #	Description	Qty
46	CAB-13012	Leg Press to Floater Cable	1
49	BFM-50885	1" O.D. X 3/4" Pulley Spacer	4
51	BFH-50129	HCS 3/8"-16 X 4" P5	2
52	BFH-50122	HCS 3/8"-16 X 2 1/4" P5	1
54	BFH-50250	1 1/4" Shoulder Bolt	1
58	BFH-50128	HCS 3/8"-16 X 3 3/4" P5	2
64	BFH-50267	5/16"-18 Nylock (Black)	1

All Flat Washers and Nylocks are 3/8" unless otherwise noted.

Step 7a:

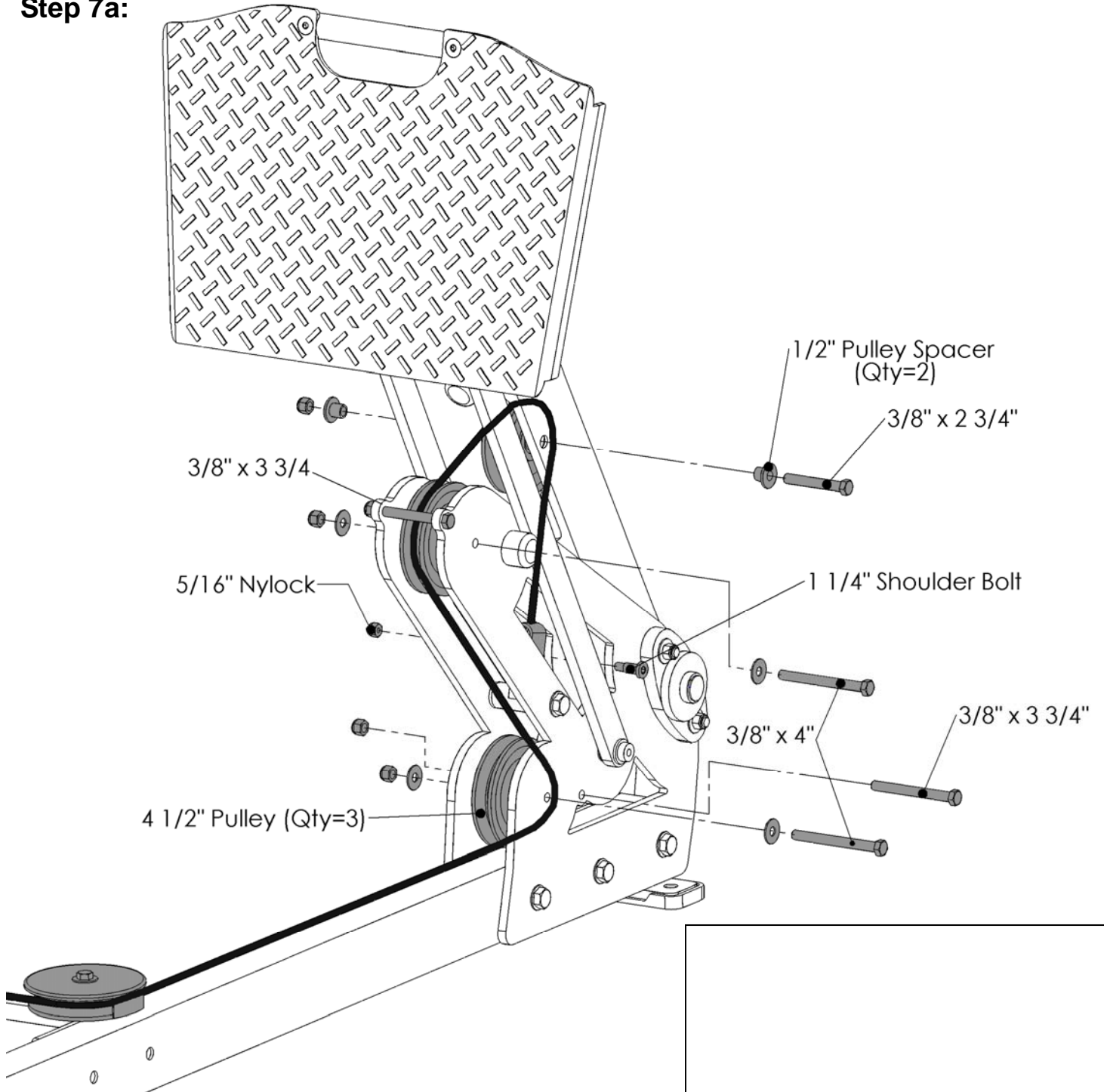
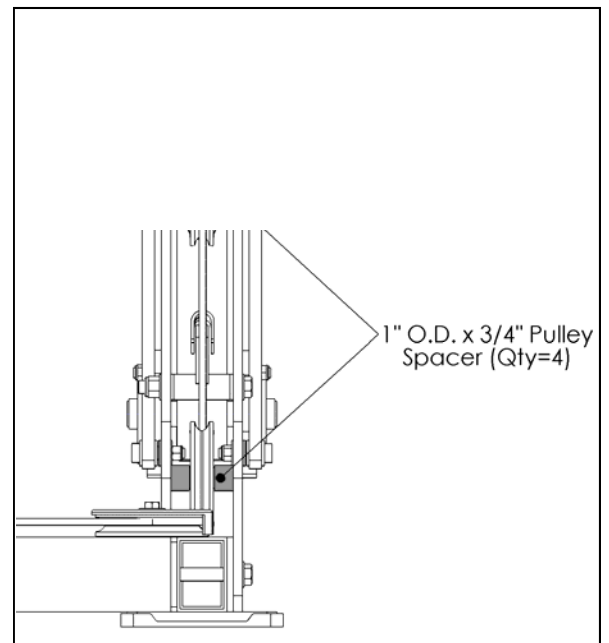


Figure 7A



All Flat Washers and Nylocks are 3/8" unless otherwise noted.

Step 8:

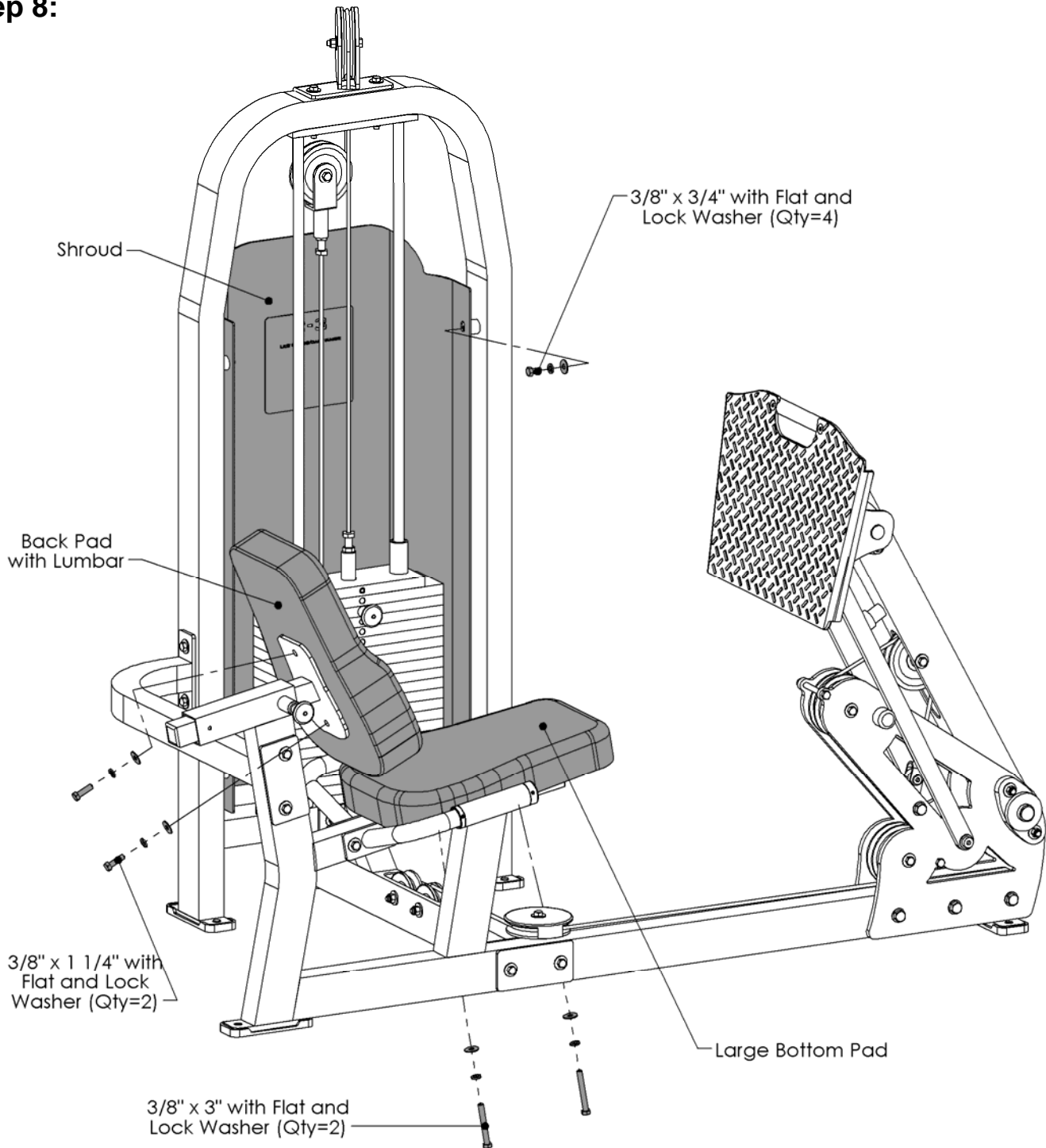


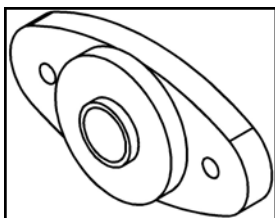
Figure 8

Item #	Part #	Description	Qty
2	BFM-50531	Shroud	1
18	BFU-10120	Back Pad With Lumbar	1
19	BFU-10117	Large Bottom Pad	1
36	BFH-50146	3/8" Flat Washer (Black)	8
38	BFH-50125	HCS 3/8"-16 X 3" P5	2
43	BFH-50147	3/8" Lock Washer (Black)	8
44	BFH-50254	HCS 3/8-16 X 3/4 P5	4
59	BFH-50119	HCS 3/8"-16 X 1 1/4" P5	2

All Flat Washers and Nylocks are 3/8" unless otherwise noted.

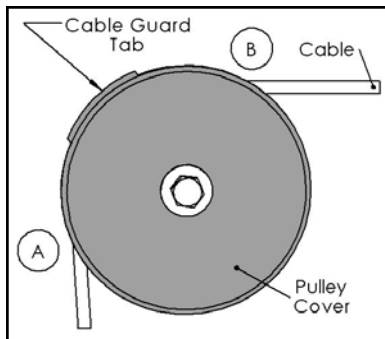
Final Assembly and Troubleshooting

IMPORTANT - Check These Components Before Using Gym:



- **Wrench Tighten** the two set screws on all Bearings (Pillow Block Bearings and Side Mounted Flange Bearings) with an Allen Wrench. Refer to Steps 4 and 5.

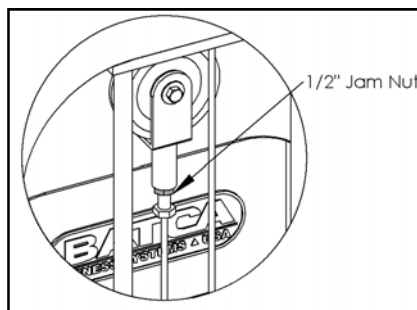
Side Mounted Flange
Bearing BFH-50171



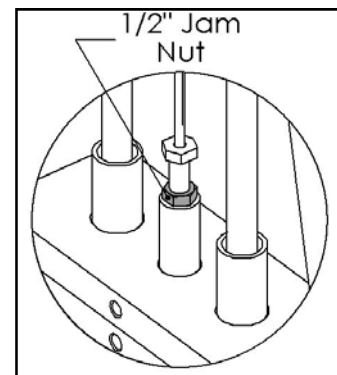
- **Position** the cable guard tab on the Pulley Cover so that the tab prevents the cable from coming out of its track on the 4 1/2" Pulley. An example of this positioning can be seen in the figure to the left. The cable guard tab should be positioned so that it is in the middle of the cable wrap on the 4 1/2" Pulley, between points "A" and "B". This will allow better protection and prevent the cable from rubbing the cable guard tab. Refer to Step 7 and 7a.

Pulley Cover
BFM-50345

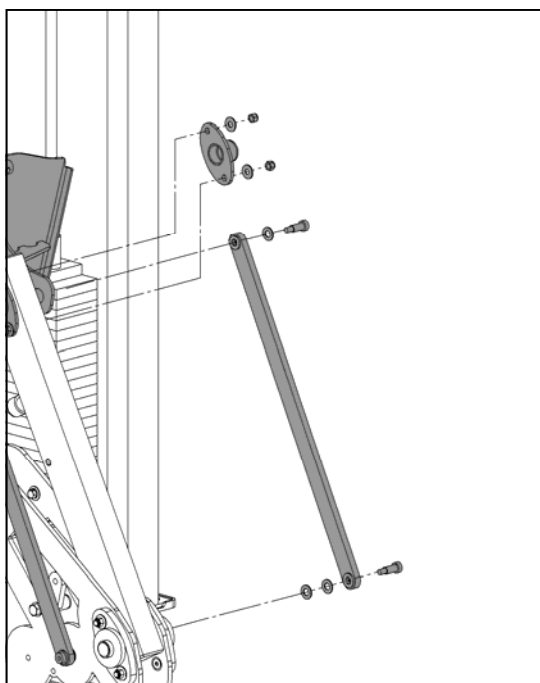
- Each Cable with a threaded bolt on either end **must be threaded at least 1/2"** into its attachment, whether it be a Free Floater, Lockout Free Floater, or the Top Plate of the weight stack. Each must also be secured with a 1/2" Jam Nut to ensure a safe and proper connection.



Free Floater



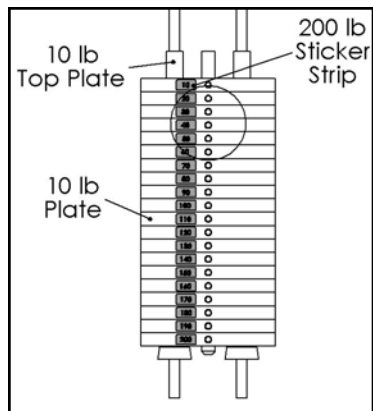
Top Plate



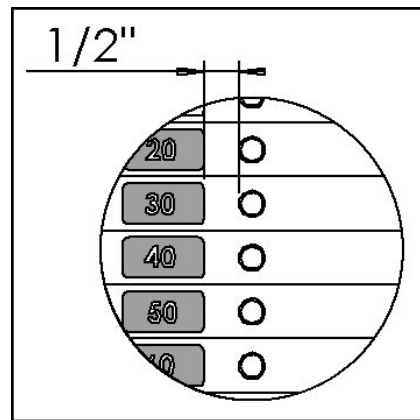
Do NOT over tighten any of the bolts in the figure to the left. Over tightening may cause the parts to bind, causing damage and impeding your exercise. Refer to Step 5.

Final Assembly and Troubleshooting

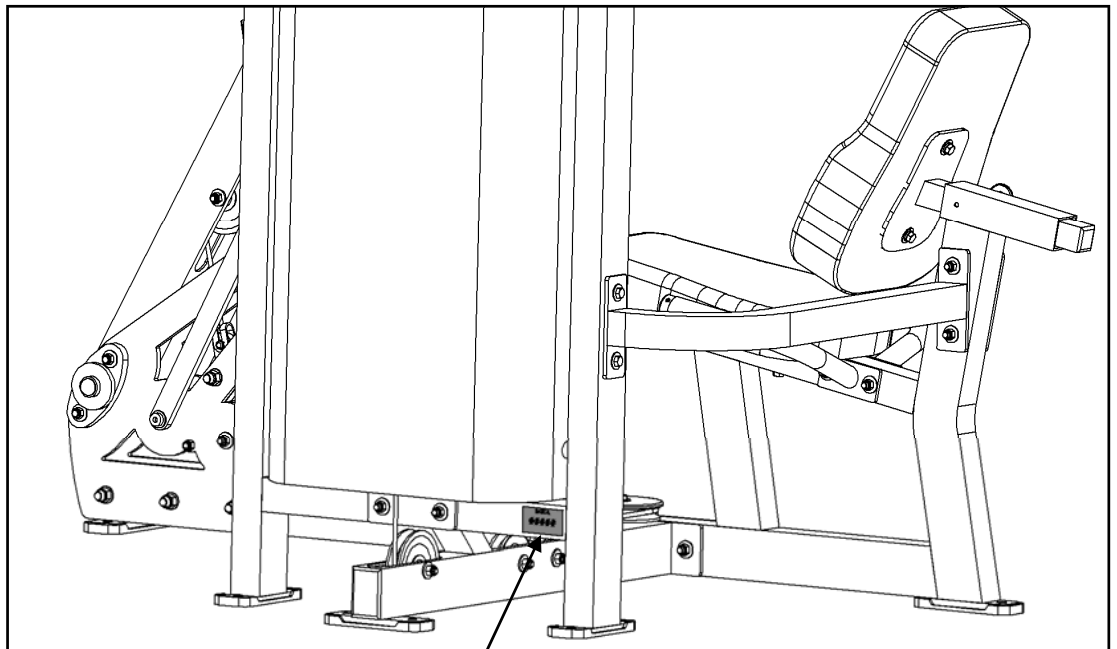
Weight Stack Decals:



200lb Stack (Standard)



Serial Number:



- **Record** your serial number on the front of this manual and keep for your records. The serial number can be found on the back of the cage as seen in the figure above.

Guide Rod Lubrication:

- Clean guide rods with a lint-free cloth and apply a thin layer of silicon lubricant (Part # BFH-50262) to each guide rod. This will ensure a glass smooth performance from your weight stack.

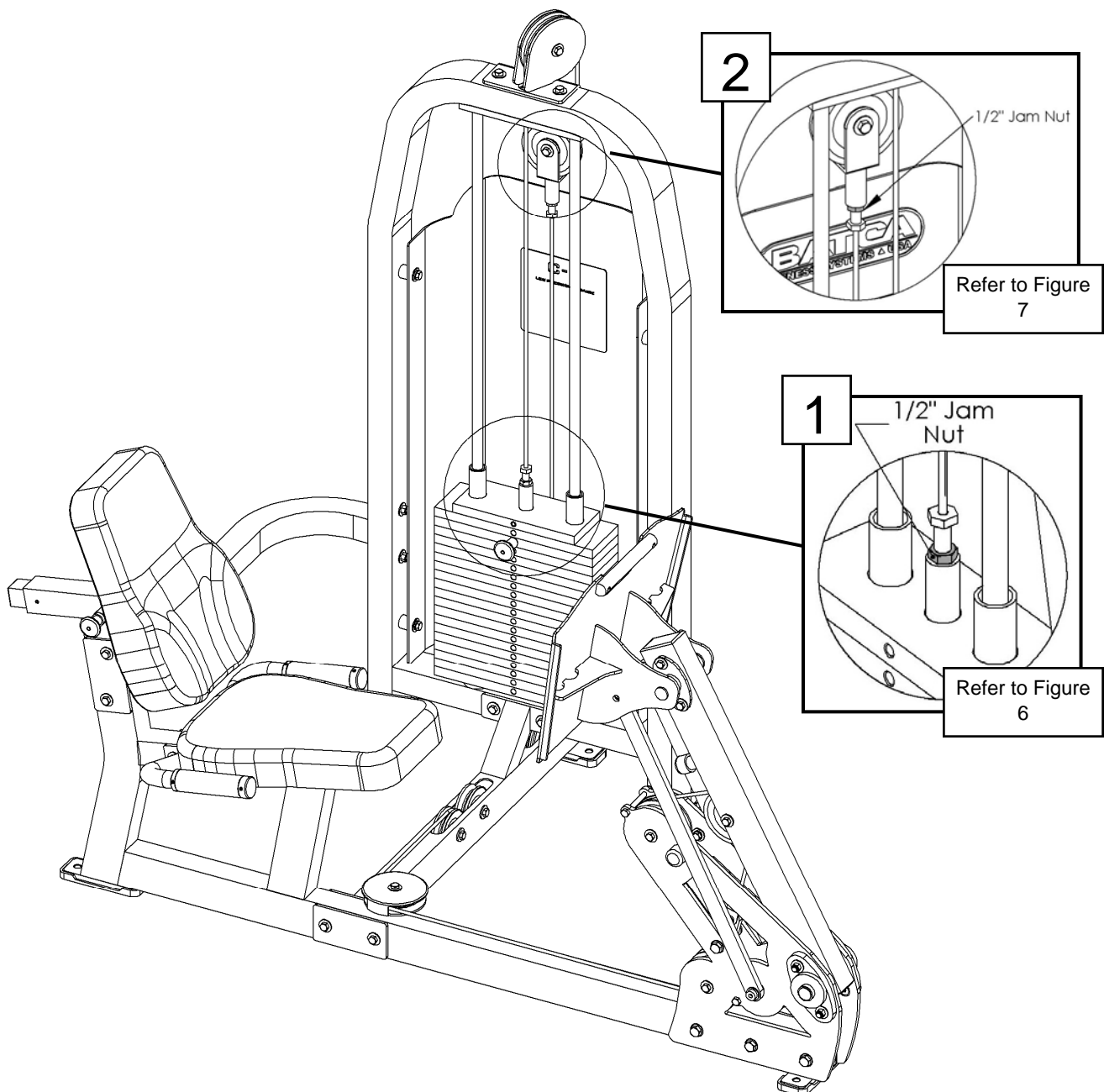
Cable Adjustments

- **Adjust** cables to proper tension from any of the locations shown below.



Note: All cables with threaded adjustable ends must have at least 1/2" of the threads threaded in to its counterpart. It is very important that the 1/2" Jam Nut be wrench tightened to the counterpart to ensure that the threaded adjustable end of the cable does not back out of its counterpart.

- **How to Begin:** In order to get the proper tension in your cables, it is recommended that you follow the sequence 1-2 as shown below. The numbers for this sequence can be found in the upper left corner of each of the detailed views. Each detailed view below will refer you to the original Figure for more detailed information. Follow the detailed information found in each referenced figure.
- **Note:** If the top plate raises off of the second plate in the weight stack, then the cable tension is too tight. You will need to take some of the tension out to lower the Top plate flush with the second plate.



Preventive Maintenance

Batca Fitness Systems strives to give you the very best in quality, performance and safety through carefully engineered designs and excellent workmanship. In order to maintain this high level of quality the preventative maintenance schedule below should be followed.

Clean upholstery, grips, and roller pads with mild soap and water generally after every use. The guide rods, chrome slides and frame should be cleaned with a cotton cloth. Upon cleaning the guide rods, a thin layer of Silicone or Teflon gel should be applied to each rod to ensure a glass smooth performance.

An overall inspection should be done before each workout. If the warning and safety decals are worn or have been removed they should be replaced immediately. The cables and cable systems should be inspected for signs of wear and proper tension. In order to check cables properly you should carefully run the cable through your fingertips, checking for signs of wear, cracks, burs and thinning spots. Replace any part at first signs of wear. Cables should be adjusted for proper tension. See assembly instructions for this detail. All hardware, stops, and adjustments should be checked and tightened as required.

The guide rods on your machine should be cleaned and lubricated regularly. This will ensure a glass smooth performance from your weight stack. A thin layer of either Silicone or Teflon gel should applied to each rod. Each pillow block bearing and flange bearing has a grease fittings that must be lubricated regularly. Use general purpose bearing grease and follow the schedule below.

Although cables should be inspected daily, it is important that ALL cables be replaced as directed in the schedule below. Please note that at any first sign of wear the cable should be replaced immediately.

If there are any questions concerning maintenance, please contact your local Batca dealer or contact Batca Fitness Systems directly at:

Batca Fitness Systems
(919) 255-1233
www.batcafitness.com

	Daily		Weekly		Monthly		Quarterly		Years	
	Commercial	Home	Commercial	Home	Commercial	Home	Commercial	Home	Commercial	Home
Clean										
Upholstery	X			X						
Hand Grips	X			X						
Roller Pads	X			X						
Guide Rods			X			X				
Chrome Slides			X			X				
Frame			X			X				
Inspect										
Overall	X	X								
Safety Decals	X	X								
Cables	X	X								
Cable Tension			X			X				
Pulleys	X	X								
Hardware	X	X								
Stops	X	X								
Upholstery	X	X								
Hand Grips			X			X				
Frame			X			X				
Bushings	X			X						
Bearings	X			X						
Lubricate										
Guide Rods			X			X				
Bearings							As Needed			1
Replace										
Cables									1	3

Limited Lifetime Warranty

What is covered

For Residential Use:

Batca Fitness Systems warrants all of its products against defects in manufacturing, materials and workmanship under normal use and service for one year from date of purchase including paint, chrome, upholstery and grips. Batca Fitness Systems also warrants all cables, belts, bolts, nuts, caps, plugs, bumpers, washers, levelers, decals, gas springs and other hardware for three years after date of purchase; all moving parts, including pulleys, bushings, bearings and pull pins for five years after date of purchase and warrants the frame and all welded parts for the lifetime of the original purchaser.

For Commercial Use:

Batca Fitness Systems warrants all of its products against defects in manufacturing, materials and workmanship under normal use and service for six months from date of purchase including paint, chrome, upholstery and grips. Batca Fitness Systems also warrants all cables, belts, bolts, nuts, caps, plugs, bumpers, washers, levelers, decals, gas springs and other hardware for one year after date of purchase; all moving parts, including pulleys, bushings, bearings and pull pins for three years after date of purchase and warrants the frame and all welded parts for ten years after date of purchase.

What is not covered

This warranty does not cover damage, which results from shipping, misuse, abuse, neglect, carelessness, modification or alteration, accident, fire, flood, "acts of God" or other contingencies beyond the control of Batca Fitness Systems. This warranty also does not cover deterioration from wear and tear or exposure or any defect, which would not have happened if instructions in the owner's manual had been followed. Improper installation, improper assembly or follow-up maintenance along with installation of parts or accessories not originally intended for products of Batca Fitness Systems are also not covered by this warranty. Only genuine Batca parts should be used for replacement, repair, and maintenance for this warranty to apply.

Defective parts will be repaired or replaced at Batca Fitness Systems option, without parts charge to the purchaser. All returns require a return authorization prior to acceptance of repair work. Batca Fitness Systems reserves the right to make design changes without any prior notification and shall not be responsible for incidental or consequential damages.

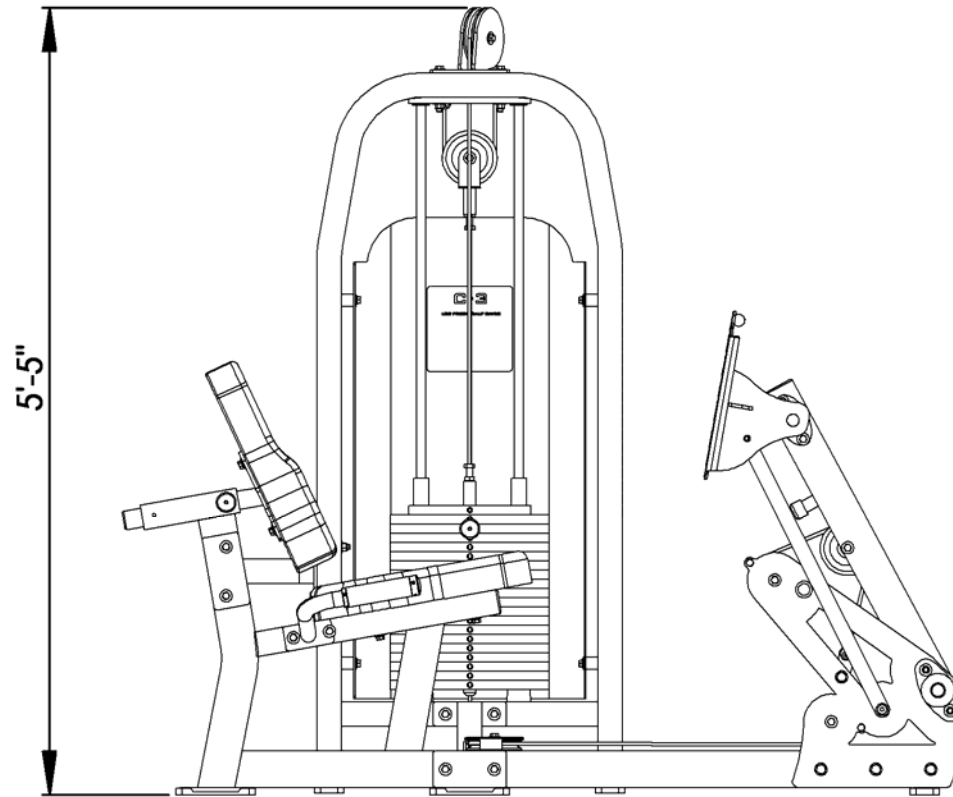
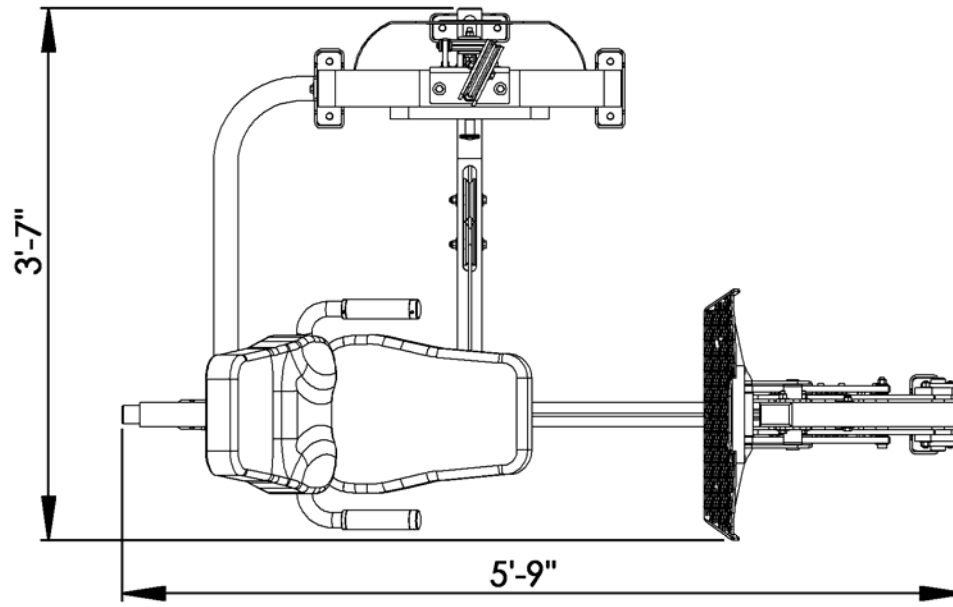
The purchaser is responsible for shipping the defective part back to the factory. Repair or replacement is the exclusive and sole remedy of the purchaser. Labor charges associated with parts changeovers are not covered by this warranty. Proof of purchase, serial number, model number and date of purchase will be required along with all pertinent information of the alleged damage.

This warranty applies only to the original purchaser and is not transferable. Claims under this warranty must be made directly to Batca Fitness Systems.

Batca Fitness Systems
1207 N. New Hope Road
Raleigh, NC 27610
(919) 255-1233

www.batcafitness.com

Please keep this for your records.



Layout Diagram

The C-3 has a layout dimension of 3'-7" (width) x 5'-9" (length) x 5'-5" (height). There should be a minimum of 18", preferably 24", of working space around the entire unit.